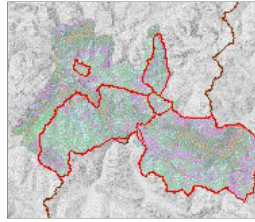


## SNP\_NALA.habitap\_snp\_vm

### SDE Feature Class



#### Tags

HABITALP, NATURA 2000, Swiss National Park, Habitats, Vegetation, Interpretation key, CIR, Aerial photographs

#### Summary

Habitat map of the complete Habitalp region, Swiss National Park and Val Müstair

#### Description

The HABITALP project deals with the diversity of alpine habitats and its goal is to monitor in a standardized way long term environmental changes in these habitats. This is performed with the help of colour infrared (CIR) aerial photographs. Special focus is given to the identification and long term survey (monitoring) of NATURA 2000 sites, in particular of habitats cited in annex I of the Habitat Directive, which are detectable by aerial photographs. This dataset is the final version and contains all mapped areas of the HABITALP perimeter "Habitalp\_perimeter"

#### Credits

There are no credits for this item.

#### Use limitations

There are no access and use limitations for this item.

#### Extent

**West** 9.980591 **East** 10.505217  
**North** 46.799184 **South** 46.529905

#### Scale Range

**Maximum (zoomed in)** 1:5,000  
**Minimum (zoomed out)** 1:150,000,000

### ArcGIS Metadata ►

#### Topics and Keywords ►

\* CONTENT TYPE Downloadable Data

[Hide Topics and Keywords ▲](#)

#### Citation ►

\* TITLE SNP\_NALA.habitap\_snp\_vm

PRESENTATION FORMATS \* digital map

[Hide Citation ▲](#)

#### Resource Details ►

DATASET LANGUAGES \* German (SWITZERLAND)

SPATIAL REPRESENTATION TYPE \* vector

\* PROCESSING ENVIRONMENT Microsoft Windows 7 Version 6.1 (Build 7601) Service Pack 1; Esri ArcGIS 10.1.1.3300

#### ARC GIS ITEM PROPERTIES

\* NAME SNP\_NALA.habitap\_snp\_vm

\* LOCATION Server=192.168.1.15; Service=5154; User=snp\_nala; Version=SDE.DEFAULT

\* ACCESS PROTOCOL ArcSDE Connection

[Hide Resource Details ▲](#)

#### Extents ►

##### EXTENT

##### VERTICAL EXTENT

\* MINIMUM VALUE 0.000000  
 \* MAXIMUM VALUE 3174.226600

##### EXTENT

##### GEOGRAPHIC EXTENT

##### BOUNDING RECTANGLE

EXTENT TYPE Extent used for searching  
 \* WEST LONGITUDE 9.980591  
 \* EAST LONGITUDE 10.505217  
 \* NORTH LATITUDE 46.799184  
 \* SOUTH LATITUDE 46.529905  
 \* EXTENT CONTAINS THE RESOURCE Yes

##### EXTENT IN THE ITEM'S COORDINATE SYSTEM

\* WEST LONGITUDE 2794849.402400  
 \* EAST LONGITUDE 2833999.510000  
 \* SOUTH LATITUDE 1157590.497700  
 \* NORTH LATITUDE 1186141.057600  
 \* EXTENT CONTAINS THE RESOURCE Yes

[Hide Extents ▲](#)

#### Spatial Reference ►

## ARCGIS COORDINATE SYSTEM

\* TYPE **Projected**  
 \* GEOGRAPHIC COORDINATE REFERENCE **GCS\_CH1903+**  
 \* PROJECTION **CH1903+\_LV95**  
 \* COORDINATE REFERENCE DETAILS  
 PROJECTED COORDINATE SYSTEM  
 WELL-KNOWN IDENTIFIER **2056**  
 X ORIGIN **-27386400**  
 Y ORIGIN **-32067900**  
 XY SCALE **10000**  
 Z ORIGIN **-100000**  
 Z SCALE **10000**  
 M ORIGIN **0**  
 M SCALE **1**  
 XY TOLERANCE **0.001**  
 Z TOLERANCE **0.001**  
 M TOLERANCE **0.001**  
 HIGH PRECISION **true**  
 LATEST WELL-KNOWN IDENTIFIER **2056**  
 WELL-KNOWN TEXT PROJCS["CH1903+\_LV95",GEOGCS["GCS\_CH1903+",DATUM["D\_CH1903+",SPHEROID  
 ["Bessel\_1841",6377397.155,299.1528128]],PRIMEM["Greenwich",0.0],UNIT["Degree",0.0174532925199433]],PROJECTION  
 ["Hotine\_Oblique\_Mercator\_Azimuth\_Center"],PARAMETER["False\_Easting",2600000.0],PARAMETER["False\_Northing",1200000.0],PARAMETER  
 ["Scale\_Factor",1.0],PARAMETER["Azimuth",90.0],PARAMETER["Longitude\_Of\_Center",7.439583333333333],PARAMETER  
 ["Latitude\_Of\_Center",46.9524055555556],UNIT["Meter",1.0],AUTHORITY["EPSG",2056]]

## REFERENCE SYSTEM IDENTIFIER

\* VALUE **2056**  
 \* CODESPACE **EPSG**  
 \* VERSION **7.11.2**

[Hide Spatial Reference ▲](#)

**Spatial Data Properties ►**

## VECTOR ►

\* LEVEL OF TOPOLOGY FOR THIS DATASET **geometry only**

## GEOMETRIC OBJECTS

FEATURE CLASS NAME **SNP\_NALA.habitalp\_snp\_vm**  
 \* OBJECT TYPE **composite**  
 \* OBJECT COUNT **67146**

[Hide Vector ▲](#)

## ARCGIS FEATURE CLASS PROPERTIES ►

FEATURE CLASS NAME **SNP\_NALA.habitalp\_snp\_vm**  
 \* FEATURE TYPE **Simple**  
 \* GEOMETRY TYPE **Polygon**  
 \* HAS TOPOLOGY **FALSE**  
 \* FEATURE COUNT **67146**  
 \* SPATIAL INDEX **TRUE**  
 \* LINEAR REFERENCING **FALSE**

[Hide ArcGIS Feature Class Properties ▲](#)

[Hide Spatial Data Properties ▲](#)

**Geoprocessing history ►**

## PROCESS

PROCESS NAME  
 DATE **2008-11-03 16:30:29**  
 TOOL LOCATION **C:\Programme\ArcGIS\ArcToolbox\Toolboxes\Data Management Tools.tbx\CopyFeatures**  
 COMMAND ISSUED  
 CopyFeatures Q:\prjdata\prj\_gissnp\habitalp\gis\_snp\HABITALP.mdb\Kartierung\Habitat "Database  
 Connections\SNP\_MAIN\_SNP\_BOTANY.sde\MAIN\_SNP\_BOTANY.habitalp\MAIN\_SNP\_BOTANY.Habitat" # 0 0 0  
 INCLUDE IN LINEAGE WHEN EXPORTING METADATA **No**

## PROCESS

PROCESS NAME  
 DATE **2010-03-02 10:28:02**  
 TOOL LOCATION **C:\Programme\ArcGIS\ArcToolbox\Toolboxes\Data Management Tools.tbx\Project**  
 COMMAND ISSUED  
 Project "Database Connections\Connection to 192.168.1.211.sde\MAIN\_SNP\_BOTANY.Habitalp\_lv95" "Database Connections\Connection to  
 192.168.1.211.sde\MAIN\_SNP\_BOTANY.Habitalp\_lv95\_Project" PROJCS["CH1903+\_LV95",GEOGCS["GCS\_CH1903+",DATUM["D\_CH1903+",SPHEROID  
 ["Bessel\_1841",6377397.155,299.1528128]],PRIMEM["Greenwich",0.0],UNIT["Degree",0.0174532925199433]],PROJECTION  
 ["Hotine\_Oblique\_Mercator\_Azimuth\_Center"],PARAMETER["False\_Easting",2600000.0],PARAMETER["False\_Northing",1200000.0],PARAMETER  
 ["Scale\_Factor",1.0],PARAMETER["Azimuth",90.0],PARAMETER["Longitude\_Of\_Center",7.439583333333333],PARAMETER  
 ["Latitude\_Of\_Center",46.9524055555556],UNIT["Meter",1.0]] # PROJCS["CH1903+\_LV95\_pseudo",GEOGCS["GCS\_CH1903+",DATUM  
 ["D\_CH1903+",SPHEROID["Bessel\_1841",6377397.155,299.1528128]],PRIMEM["Greenwich",0.0],UNIT["Degree",0.0174532925199433]],PROJECTION  
 ["Hotine\_Oblique\_Mercator\_Azimuth\_Center"],PARAMETER["False\_Easting",600000.0],PARAMETER["False\_Northing",200000.0],PARAMETER  
 ["Scale\_Factor",1.0],PARAMETER["Azimuth",90.0],PARAMETER["Longitude\_Of\_Center",7.439583333333333],PARAMETER  
 ["Latitude\_Of\_Center",46.9524055555556],UNIT["Meter",1.0]],VERTCS["LHN95",VDATUM["Landeshohennetz\_1995"],PARAMETER  
 ["Vertical\_Shift",0.0],PARAMETER["Direction",1.0],UNIT["Meter",1.0]]  
 INCLUDE IN LINEAGE WHEN EXPORTING METADATA **No**

## PROCESS

PROCESS NAME  
 DATE **2012-10-17 14:50:01**  
 TOOL LOCATION **c:\program files (x86)\arcgis\desktop10.0\ArcToolbox\Toolboxes\Data Management Tools.tbx\CopyFeatures**  
 COMMAND ISSUED  
 CopyFeatures "Database Connections\Connection to snp.sde.parcs.ch.sde\MAIN\_SNP\_BOTANY.Habitalp"  
 Q:\prjdata\biosfera\habitalp\_sr\gis\_work\habitalp\_sr\_121017.gdb\Habitalp # 0 0 0  
 INCLUDE IN LINEAGE WHEN EXPORTING METADATA **No**

## PROCESS

PROCESS NAME  
 DATE **2012-10-22 12:26:36**  
 TOOL LOCATION **c:\program files (x86)\arcgis\desktop10.0\ArcToolbox\Toolboxes\Data Management Tools.tbx\CopyFeatures**  
 COMMAND ISSUED  
 CopyFeatures Q:\prjdata\biosfera\habitalp\_sr\gis\_work\habitalp\_sr\_121017.gdb\Habitalp  
 Q:\prjdata\biosfera\habitalp\_sr\gis\_work\habitalp\_sr\_121022.gdb\Habitalp # 0 0 0  
 INCLUDE IN LINEAGE WHEN EXPORTING METADATA **No**

## PROCESS

## PROCESS NAME

DATE 2012-10-24 17:16:08

TOOL LOCATION c:\program files (x86)\arcgis\desktop10.0\ArcToolbox\Toolboxes\Data Management Tools.tbx\CopyFeatures

## COMMAND ISSUED

CopyFeatures Q:\prjdata\biosfera\habitalp\_sr\gis\_work\habitalp\_sr\_121022.gdb\Habitalp  
 Q:\prjdata\biosfera\habitalp\_sr\gis\_work\habitalp\_sr\_bereinigt\_121024.gdb\Habitalp # 0 0 0  
 INCLUDE IN LINEAGE WHEN EXPORTING METADATA No

## PROCESS

## PROCESS NAME

DATE 2012-10-26 10:57:01

TOOL LOCATION c:\program files (x86)\arcgis\desktop10.0\ArcToolbox\Toolboxes\Data Management Tools.tbx\CopyFeatures

## COMMAND ISSUED

CopyFeatures Q:\prjdata\biosfera\habitalp\_sr\gis\_work\habitalp\_snp\_bereinigt\_121024.gdb\Habitalp\_snp\_bereinigt\_121024  
 Q:\prjdata\biosfera\habitalp\_sr\gis\_work\habitalp\_sr\_121026.gdb\Habitalp\_snp\_bereinigt\_121024 # 0 0 0  
 INCLUDE IN LINEAGE WHEN EXPORTING METADATA No

## PROCESS

## PROCESS NAME

DATE 2012-10-29 16:45:14

TOOL LOCATION c:\program files (x86)\arcgis\desktop10.0\ArcToolbox\Toolboxes\Data Management Tools.tbx\CopyFeatures

## COMMAND ISSUED

CopyFeatures Q:\prjdata\biosfera\habitalp\_sr\gis\_work\habitalp\_sr\_121026.gdb\Habitalp\_snp\_bereinigt\_121024  
 Q:\prjdata\biosfera\habitalp\_sr\gis\_work\habitalp\_sr\_121029.gdb\Habitalp\_snp\_bereinigt\_121024 # 0 0 0  
 INCLUDE IN LINEAGE WHEN EXPORTING METADATA No

## PROCESS

## PROCESS NAME

DATE 2012-11-15 14:38:13

TOOL LOCATION c:\program files (x86)\arcgis\desktop10.0\ArcToolbox\Toolboxes\Data Management Tools.tbx\Merge

## COMMAND ISSUED

Merge Habitalp\_snp\_bereinigt\_121024;Habitat Q:\prjdata\biosfera\habitalp\_sr\gis\_work\mue stair\_20121115.gdb\habitalp\_snp\_vm\_merge\_12115  
 "HC "Habitat-CLASS" true true false 4 Long 0 0 ,First,#,Habitalp\_snp\_bereinigt\_121024,HC,-1,-1,Habitat,HC,-1,-1;HT "Habitat-TYPE"  
 true true false 4 Long 0 0 ,First,#,Habitalp\_snp\_bereinigt\_121024,HT,-1,-1,Habitat,HT,-1,-1;DC\_WATER "Water" true true false 4 Long 0  
 0 ,First,#,Habitalp\_snp\_bereinigt\_121024,DC\_WATER,-1,-1,Habitat,DC Water,-1,-1;DC ROCK "Rock" true true false 4 Long 0  
 0 ,First,#,Habitalp\_snp\_bereinigt\_121024,DC ROCK,-1,-1,Habitat,DC Rock,-1,-1;DC SCREE "Scree" true true false 4 Long 0  
 0 ,First,#,Habitalp\_snp\_bereinigt\_121024,DC SCREE,-1,-1,Habitat,DC Scree,-1,-1;DC\_GH "Grass, Herbs" true true false 4 Long 0  
 0 ,First,#,Habitalp\_snp\_bereinigt\_121024,DC\_GH,-1,-1;DC\_DS "Dwarf, Fern, big Perennial Herbs" true true false 4 Long 0  
 0 ,First,#,Habitalp\_snp\_bereinigt\_121024,DC\_DS,-1,-1,Habitat,DC DS,-1,-1;DC\_SHRUBS "Shrubs" true true false 4 Long 0  
 0 ,First,#,Habitalp\_snp\_bereinigt\_121024,DC\_SHRUBS,-1,-1,Habitat,DC Shrubs,-1,-1;DC TREES "Trees" true true false 4 Long 0  
 0 ,First,#,Habitalp\_snp\_bereinigt\_121024,DC TREES,-1,-1,Habitat,DC Trees,-1,-1;DC SEALED "Sealed Area" true true false 4 Long 0  
 0 ,First,#,Habitalp\_snp\_bereinigt\_121024,DC SEALED,-1,-1,Habitat,DC Sealed,-1,-1;DC\_BUILDNG "Building Coverage" true true false 4  
 Long 0 0 ,First,#,Habitalp\_snp\_bereinigt\_121024,DC\_BUILDNG,-1,-1,Habitat,DC\_Buildng,-1,-1;AC1 "Add. Character. 1" true true false 7  
 Text 0 0 ,First,#,Habitalp\_snp\_bereinigt\_121024,AC1,-1,-1,Habitat,AC1,-1,-1;AC2 "Add. Character. 2" true true false 7 Text 0  
 0 ,First,#,Habitalp\_snp\_bereinigt\_121024,AC2,-1,-1,Habitat,AC2,-1,-1;AC3 "Add. Character. 3" true true false 7 Text 0  
 0 ,First,#,Habitalp\_snp\_bereinigt\_121024,AC3,-1,-1,Habitat,AC3,-1,-1;SP\_HERB "Grass, Herbs, ..." true true false 6 Text 0  
 0 ,First,#,Habitalp\_snp\_bereinigt\_121024,SP\_HERB,-1,-1;SP\_SHRUBS "Shrubs" true true false 6 Text 0  
 0 ,First,#,Habitalp\_snp\_bereinigt\_121024,SP\_SHRUBS,-1,-1,Habitat,SP Shrubs,-1,-1;SP TREES D "Deciduous" true true false 6 Text 0  
 0 ,First,#,Habitalp\_snp\_bereinigt\_121024,SP\_TREES D,-1,-1,Habitat,SP\_Trees D,-1,-1;SP TREES C "Coniferous" true true false 6 Text 0  
 0 ,First,#,Habitalp\_snp\_bereinigt\_121024,SP\_TREES C,-1,-1,Habitat,SP\_Trees C,-1,-1;L\_000 "Laubholz" true true false 4 Long 0  
 0 ,First,#,Habitalp\_snp\_bereinigt\_121024,L\_000,-1,-1,Habitat,L\_000,-1,-1;L\_100 "Buche" true true false 4 Long 0  
 0 ,First,#,Habitalp\_snp\_bereinigt\_121024,L\_100,-1,-1,Habitat,L\_100,-1,-1;L\_400 "Ahorn, Linde, Ulme" true true false 4 Long 0  
 0 ,First,#,Habitalp\_snp\_bereinigt\_121024,L\_400,-1,-1,Habitat,L\_400,-1,-1;L\_500 "Birke" true true false 4 Long 0  
 0 ,First,#,Habitalp\_snp\_bereinigt\_121024,L\_500,-1,-1,Habitat,L\_500,-1,-1;L\_600 "Erle" true true false 4 Long 0  
 0 ,First,#,Habitalp\_snp\_bereinigt\_121024,L\_600,-1,-1,Habitat,L\_600,-1,-1;L\_700 "Weide, Pappel" true true false 4 Long 0  
 0 ,First,#,Habitalp\_snp\_bereinigt\_121024,L\_700,-1,-1,Habitat,L\_700,-1,-1;L\_001 "Div. Laubholz" true true false 4 Long 0  
 0 ,First,#,Habitalp\_snp\_bereinigt\_121024,L\_001,-1,-1,Habitat,L\_001,-1,-1;C\_000 "Nadelholz" true true false 4 Long 0  
 0 ,First,#,Habitalp\_snp\_bereinigt\_121024,C\_000,-1,-1,Habitat,C\_000,-1,-1;C\_100 "Fichte" true true false 4 Long 0  
 0 ,First,#,Habitalp\_snp\_bereinigt\_121024,C\_100,-1,-1,Habitat,C\_100,-1,-1;C\_310 "Waldföhre" true true false 4 Long 0  
 0 ,First,#,Habitalp\_snp\_bereinigt\_121024,C\_310,-1,-1,Habitat,C\_310,-1,-1;C\_330 "Arve/Zirbe" true true false 4 Long 0  
 0 ,First,#,Habitalp\_snp\_bereinigt\_121024,C\_330,-1,-1,Habitat,C\_330,-1,-1;C\_341 "Legföhre" true true false 4 Long 0  
 0 ,First,#,Habitalp\_snp\_bereinigt\_121024,C\_341,-1,-1,Habitat,C\_341,-1,-1;C\_342 "Bergföhre (Spirke)" true true false 4 Long 0  
 0 ,First,#,Habitalp\_snp\_bereinigt\_121024,C\_342,-1,-1,Habitat,C\_342,-1,-1;C\_700 "Lärche" true true false 4 Long 0  
 0 ,First,#,Habitalp\_snp\_bereinigt\_121024,C\_700,-1,-1,Habitat,C\_700,-1,-1;C\_001 "Div. Nadelholz" true true false 4 Long 0  
 0 ,First,#,Habitalp\_snp\_bereinigt\_121024,C\_001,-1,-1,Habitat,C\_001,-1,-1;REMARKS "REMARKS" true true false 200 Text 0  
 0 ,First,#,Habitalp\_snp\_bereinigt\_121024,REMARKS,-1,-1;DI\_DT\_U "Stehendes Totholz" true true false 4 Long 0  
 0 ,First,#,Habitalp\_snp\_bereinigt\_121024,DI\_DT\_U,-1,-1;DI\_DT\_D "Liegendes Totholz" true true false 4 Long 0  
 0 ,First,#,Habitalp\_snp\_bereinigt\_121024,DI\_DT\_D,-1,-1;DI\_TYPE "DI Type" true true false 4 Long 0  
 0 ,First,#,Habitalp\_snp\_bereinigt\_121024,DI\_REMARK "DI REMARK" true true false 200 Text 0  
 0 ,First,#,Habitalp\_snp\_bereinigt\_121024,DI\_REMARK,-1,-1;DQ "Data Quality" true true false 4 Long 0  
 0 ,First,#,Habitalp\_snp\_bereinigt\_121024,DQ,-1,-1;FIELD\_VERIFICATION\_DATE "FIELD VERIFICATION DATE" true true false 8 Date 0  
 0 ,First,#,Habitalp\_snp\_bereinigt\_121024,FIELD\_VERIFICATION\_DATE,-1,-1;FOTO "FOTO" true true false 50 Text 0  
 0 ,First,#,Habitalp\_snp\_bereinigt\_121024,FOTO,-1,-1;Kontrolle "Kontrolle" true true false 50 Text 0  
 0 ,First,#,Habitalp\_snp\_bereinigt\_121024,Kontrolle,-1,-1,Habitat,Kontrolle,-1,-1;snp\_ID\_alt "snp\_ID\_alt" true true false 4 Long 0  
 0 ,First,#,Habitalp\_snp\_bereinigt\_121024,snp\_ID\_alt,-1,-1,Habitat,snp\_ID\_alt,-1,-1;vm\_ID\_alt "vm\_ID\_alt" true true false 4 Long 0  
 0 ,First,#,Habitalp\_snp\_bereinigt\_121024,vm\_ID\_alt,-1,-1,Habitat,vm\_ID\_alt,-1,-1;SHAPE\_Length "SHAPE Length" true true false 8 Double  
 0 0 ,First,#,Habitalp\_snp\_bereinigt\_121024,SHAPE\_Length,-1,-1,Habitat,Shape\_Length,-1,-1;SHAPE\_Area "SHAPE Area" true true false 8  
 Double 0 0 ,First,#,Habitalp\_snp\_bereinigt\_121024,SHAPE\_Area,-1,-1,Habitat,Shape\_Area,-1,-1;DC\_Soil "DG Erdboden" true true false 4  
 Long 0 0 ,First,#,Habitat,DC\_Soil,-1,-1;DC\_Herbs "DG Gras, Krautschicht" true true false 4 Long 0 0 ,First,#,Habitat,DC\_Herbs,-1,-1;  
 DC\_Dwarf "DG Zwergsträucher" true true false 4 Long 0 0 ,First,#,Habitat,DC\_Dwarf,-1,-1;SP\_Herbs "Dom Art Gras-, Kraut-,  
 Zwergsträucher" true true false 6 Text 0 0 ,First,#,Habitat,SP\_Herbs,-1,-1;L\_200 "Eiche" true true false 4 Long 0  
 0 ,First,#,Habitat,L\_200,-1,-1;L\_620 "Grauerle" true true false 4 Long 0 0 ,First,#,Habitat,L\_620,-1,-1;L\_630 "Grünerle" true true  
 false 4 Long 0 0 ,First,#,Habitat,L\_630,-1,-1;DW\_U "Totholzanteil stehend" true true false 4 Long 0 0 ,First,#,Habitat,DW\_U,-1,-1;  
 DW\_L "Totholzanteil liegend" true true false 4 Long 0 0 ,First,#,Habitat,DW\_L,-1,-1;CDRemark "Change: Bemerkung" true true false  
 200 Text 0 0 ,First,#,Habitat,CDRemark,-1,-1;A\_DQ "Qualität" true true false 4 Long 0 0 ,First,#,Habitat,A\_DQ,-1,-1;A\_Status "Status  
 Bearbeitung" true true false 4 Long 0 0 ,First,#,Habitat,A\_Status,-1,-1;Bemerkungen "Bemerkungen" true true false 50 Text 0  
 0 ,First,#,Habitat,Bemerkungen,-1,-1"  
 INCLUDE IN LINEAGE WHEN EXPORTING METADATA No

## PROCESS

## PROCESS NAME

DATE 2012-11-26 09:56:20

TOOL LOCATION c:\program files (x86)\arcgis\desktop10.0\ArcToolbox\Toolboxes\Conversion Tools.tbx\FeatureClassToFeatureClass

## COMMAND ISSUED

FeatureClassToFeatureClass Q:\prjdata\biosfera\habitalp\_sr\gis\_work\mue stair\_20121115.gdb\snp\_vm\_merge\habitalp\_snp\_vm\_merge\_12115  
 Q:\prjdata\biosfera\habitalp\_sr\gis\_work\mue stair\_20121115.gdb\habitalp\_snp\_vm\_merge\_121126 # "HC "Habitat-CLASS" true true false 4  
 Long 0 0 ,First,#,Q:\prjdata\biosfera\habitalp\_sr\gis\_work\mue stair\_20121115.gdb\snp\_vm\_merge\habitalp\_snp\_vm\_merge\_12115,HC,-1,-1;HT  
 "Habitat-TYPE" true true false 4 Long 0  
 0 ,First,#,Q:\prjdata\biosfera\habitalp\_sr\gis\_work\mue stair\_20121115.gdb\snp\_vm\_merge\habitalp\_snp\_vm\_merge\_12115,HT,-1,-1;DC\_WATER  
 "Water" true true false 4 Long 0  
 0 ,First,#,Q:\prjdata\biosfera\habitalp\_sr\gis\_work\mue stair\_20121115.gdb\snp\_vm\_merge\habitalp\_snp\_vm\_merge\_12115,DC\_WATER,-1,-  
 1;DC\_ROCK "Rock" true true false 4 Long 0  
 0 ,First,#,Q:\prjdata\biosfera\habitalp\_sr\gis\_work\mue stair\_20121115.gdb\snp\_vm\_merge\habitalp\_snp\_vm\_merge\_12115,DC\_ROCK,-1,-  
 1;DC\_SCREE "Scree" true true false 4 Long 0  
 0 ,First,#,Q:\prjdata\biosfera\habitalp\_sr\gis\_work\mue stair\_20121115.gdb\snp\_vm\_merge\habitalp\_snp\_vm\_merge\_12115,DC\_SCREE,-1,-  
 1;DC\_GH "Grass, Herbs" true true false 4 Long 0  
 0 ,First,#,Q:\prjdata\biosfera\habitalp\_sr\gis\_work\mue stair\_20121115.gdb\snp\_vm\_merge\habitalp\_snp\_vm\_merge\_12115,DC\_GH,-1,-1;DC\_DS

```
"Dwarf, Fern, big Perennial Herbs" true true false 4 Long 0
0 ,First,#,Q:\prjdata\biosfera\habitalp_sr\gis_work\mue stair_20121115.gdb\snp_vm_merge\habitat_snp_vm_merge_121115,DC_DS,-1,-
1;DC_SHRUBS "Shrubs" true true false 4 Long 0
0 ,First,#,Q:\prjdata\biosfera\habitalp_sr\gis_work\mue stair_20121115.gdb\snp_vm_merge\habitat_snp_vm_merge_121115,DC_SHRUBS,-1,-
1;DC_TREES "Trees" true true false 4 Long 0
0 ,First,#,Q:\prjdata\biosfera\habitalp_sr\gis_work\mue stair_20121115.gdb\snp_vm_merge\habitat_snp_vm_merge_121115,DC_TREES,-1,-
1;DC_SEALED "Sealed Area" true true false 4 Long 0
0 ,First,#,Q:\prjdata\biosfera\habitalp_sr\gis_work\mue stair_20121115.gdb\snp_vm_merge\habitat_snp_vm_merge_121115,DC_SEALED,-1,-
1;DC_BUILDNG "Building Coverage" true true false 4 Long 0
0 ,First,#,Q:\prjdata\biosfera\habitalp_sr\gis_work\mue stair_20121115.gdb\snp_vm_merge\habitat_snp_vm_merge_121115,DC_BUILDNG,-1,-
1;AC1 "Add. Charact. 1" true true false 7 Text 0
0 ,First,#,Q:\prjdata\biosfera\habitalp_sr\gis_work\mue stair_20121115.gdb\snp_vm_merge\habitat_snp_vm_merge_121115,AC1,-1,-1;AC2
"Add. Charact. 2" true true false 7 Text 0
0 ,First,#,Q:\prjdata\biosfera\habitalp_sr\gis_work\mue stair_20121115.gdb\snp_vm_merge\habitat_snp_vm_merge_121115,AC2,-1,-1;AC3
"Add. Charact. 3" true true false 7 Text 0
0 ,First,#,Q:\prjdata\biosfera\habitalp_sr\gis_work\mue stair_20121115.gdb\snp_vm_merge\habitat_snp_vm_merge_121115,AC3,-1,-1;SP_HERB
"Grass, Herbs, ..." true true false 6 Text 0
0 ,First,#,Q:\prjdata\biosfera\habitalp_sr\gis_work\mue stair_20121115.gdb\snp_vm_merge\habitat_snp_vm_merge_121115,SP_HERB,-1,-
1;SP_SHRUBS "Shrubs" true true false 6 Text 0
0 ,First,#,Q:\prjdata\biosfera\habitalp_sr\gis_work\mue stair_20121115.gdb\snp_vm_merge\habitat_snp_vm_merge_121115,SP_SHRUBS,-1,-
1;SP_TREES_D "Deciduous" true true false 6 Text 0
0 ,First,#,Q:\prjdata\biosfera\habitalp_sr\gis_work\mue stair_20121115.gdb\snp_vm_merge\habitat_snp_vm_merge_121115,SP_TREES_D,-1,-
1;SP_TREES_C "Coniferous" true true false 6 Text 0
0 ,First,#,Q:\prjdata\biosfera\habitalp_sr\gis_work\mue stair_20121115.gdb\snp_vm_merge\habitat_snp_vm_merge_121115,SP_TREES_C,-1,-
1;L_000 "Laubholz" true true false 4 Long 0
0 ,First,#,Q:\prjdata\biosfera\habitalp_sr\gis_work\mue stair_20121115.gdb\snp_vm_merge\habitat_snp_vm_merge_121115,L_000,-1,-1;L_100
"Bu che" true true false 4 Long 0
0 ,First,#,Q:\prjdata\biosfera\habitalp_sr\gis_work\mue stair_20121115.gdb\snp_vm_merge\habitat_snp_vm_merge_121115,L_100,-1,-1;L_400
"Ahorn, Linde, Ulme" true true false 4 Long 0
0 ,First,#,Q:\prjdata\biosfera\habitalp_sr\gis_work\mue stair_20121115.gdb\snp_vm_merge\habitat_snp_vm_merge_121115,L_400,-1,-1;L_500
"Birke" true true false 4 Long 0
0 ,First,#,Q:\prjdata\biosfera\habitalp_sr\gis_work\mue stair_20121115.gdb\snp_vm_merge\habitat_snp_vm_merge_121115,L_500,-1,-1;L_600
"Erle" true true false 4 Long 0
0 ,First,#,Q:\prjdata\biosfera\habitalp_sr\gis_work\mue stair_20121115.gdb\snp_vm_merge\habitat_snp_vm_merge_121115,L_600,-1,-1;L_700
"Weide, Pappel" true true false 4 Long 0
0 ,First,#,Q:\prjdata\biosfera\habitalp_sr\gis_work\mue stair_20121115.gdb\snp_vm_merge\habitat_snp_vm_merge_121115,L_700,-1,-1;L_001
"Div. Laubholz" true true false 4 Long 0
0 ,First,#,Q:\prjdata\biosfera\habitalp_sr\gis_work\mue stair_20121115.gdb\snp_vm_merge\habitat_snp_vm_merge_121115,L_001,-1,-1;C_000
"Nadelholz" true true false 4 Long 0
0 ,First,#,Q:\prjdata\biosfera\habitalp_sr\gis_work\mue stair_20121115.gdb\snp_vm_merge\habitat_snp_vm_merge_121115,C_000,-1,-1;C_100
"Fichte" true true false 4 Long 0
0 ,First,#,Q:\prjdata\biosfera\habitalp_sr\gis_work\mue stair_20121115.gdb\snp_vm_merge\habitat_snp_vm_merge_121115,C_100,-1,-1;C_310
"Waldfoehre" true true false 4 Long 0
0 ,First,#,Q:\prjdata\biosfera\habitalp_sr\gis_work\mue stair_20121115.gdb\snp_vm_merge\habitat_snp_vm_merge_121115,C_310,-1,-1;C_330
"Arve/Zirbe" true true false 4 Long 0
0 ,First,#,Q:\prjdata\biosfera\habitalp_sr\gis_work\mue stair_20121115.gdb\snp_vm_merge\habitat_snp_vm_merge_121115,C_330,-1,-1;C_341
"Legfoehre" true true false 4 Long 0
0 ,First,#,Q:\prjdata\biosfera\habitalp_sr\gis_work\mue stair_20121115.gdb\snp_vm_merge\habitat_snp_vm_merge_121115,C_341,-1,-1;C_342
"Bergfoehre (Spirke)" true true false 4 Long 0
0 ,First,#,Q:\prjdata\biosfera\habitalp_sr\gis_work\mue stair_20121115.gdb\snp_vm_merge\habitat_snp_vm_merge_121115,C_342,-1,-1;C_700
"Laerche" true true false 4 Long 0
0 ,First,#,Q:\prjdata\biosfera\habitalp_sr\gis_work\mue stair_20121115.gdb\snp_vm_merge\habitat_snp_vm_merge_121115,C_700,-1,-1;C_001
"Div. Nadelholz" true true false 4 Long 0
0 ,First,#,Q:\prjdata\biosfera\habitalp_sr\gis_work\mue stair_20121115.gdb\snp_vm_merge\habitat_snp_vm_merge_121115,C_001,-1,-
1;REMARKS "REMARKS" true true false 200 Text 0
0 ,First,#,Q:\prjdata\biosfera\habitalp_sr\gis_work\mue stair_20121115.gdb\snp_vm_merge\habitat_snp_vm_merge_121115,REMARKS,-1,-
1;DI_DT_U "Stehendes Totholz" true true false 4 Long 0
0 ,First,#,Q:\prjdata\biosfera\habitalp_sr\gis_work\mue stair_20121115.gdb\snp_vm_merge\habitat_snp_vm_merge_121115,DI_DT_U,-1,-
1;DI_DT_D "Liegendes Totholz" true true false 4 Long 0
0 ,First,#,Q:\prjdata\biosfera\habitalp_sr\gis_work\mue stair_20121115.gdb\snp_vm_merge\habitat_snp_vm_merge_121115,DI_DT_D,-1,-
1;DI_TYPE "DI Type" true true false 4 Long 0
0 ,First,#,Q:\prjdata\biosfera\habitalp_sr\gis_work\mue stair_20121115.gdb\snp_vm_merge\habitat_snp_vm_merge_121115,DI_TYPE,-1,-
1;DI_REMARK "DI REMARK" true true false 200 Text 0
0 ,First,#,Q:\prjdata\biosfera\habitalp_sr\gis_work\mue stair_20121115.gdb\snp_vm_merge\habitat_snp_vm_merge_121115,DI_REMARK,-1,-1;DQ
"Data Quality" true true false 4 Long 0
0 ,First,#,Q:\prjdata\biosfera\habitalp_sr\gis_work\mue stair_20121115.gdb\snp_vm_merge\habitat_snp_vm_merge_121115,DQ,-1,-
1;FIELD_VERIFICATION_DATE "FIELD VERIFICATION DATE" true true false 8 Date 0
0 ,First,#,Q:\prjdata\biosfera\habitalp_sr\gis_work\mue stair_20121115.gdb\snp_vm_merge\habitat_snp_vm_merge_121115,FIELD_VERIFICATION
-1,-1;FOTO "FOTO" true true false 50 Text 0
0 ,First,#,Q:\prjdata\biosfera\habitalp_sr\gis_work\mue stair_20121115.gdb\snp_vm_merge\habitat_snp_vm_merge_121115,FOTO,-1,-
1;Kontrolle "Kontrolle" true true false 50 Text 0
0 ,First,#,Q:\prjdata\biosfera\habitalp_sr\gis_work\mue stair_20121115.gdb\snp_vm_merge\habitat_snp_vm_merge_121115,Kontrolle,-1,-
1;snp_ID_alt "snp ID alt" true true false 4 Long 0
0 ,First,#,Q:\prjdata\biosfera\habitalp_sr\gis_work\mue stair_20121115.gdb\snp_vm_merge\habitat_snp_vm_merge_121115,snp_ID_alt,-1,-
1;vm_ID_alt "vm ID alt" true true false 4 Long 0
0 ,First,#,Q:\prjdata\biosfera\habitalp_sr\gis_work\mue stair_20121115.gdb\snp_vm_merge\habitat_snp_vm_merge_121115,vm_ID_alt,-1,-
1;DC_Soil "DG Erdboden" true true false 4 Long 0
0 ,First,#,Q:\prjdata\biosfera\habitalp_sr\gis_work\mue stair_20121115.gdb\snp_vm_merge\habitat_snp_vm_merge_121115,DC_Soil,-1,-
1;DC_Herbs "DG Gras, Krautschicht" true true false 4 Long 0
0 ,First,#,Q:\prjdata\biosfera\habitalp_sr\gis_work\mue stair_20121115.gdb\snp_vm_merge\habitat_snp_vm_merge_121115,DC_Herbs,-1,-
1;DC_Dwarf "DG Zwergstraecher" true true false 4 Long 0
0 ,First,#,Q:\prjdata\biosfera\habitalp_sr\gis_work\mue stair_20121115.gdb\snp_vm_merge\habitat_snp_vm_merge_121115,DC_Dwarf,-1,-
1;SP_Herbs "Dom Art Gras-, Kraut-, Zwergstraecher" true true false 6 Text 0
0 ,First,#,Q:\prjdata\biosfera\habitalp_sr\gis_work\mue stair_20121115.gdb\snp_vm_merge\habitat_snp_vm_merge_121115,SP_Herbs,-1,-
1;L_200 "Eiche" true true false 4 Long 0
0 ,First,#,Q:\prjdata\biosfera\habitalp_sr\gis_work\mue stair_20121115.gdb\snp_vm_merge\habitat_snp_vm_merge_121115,L_200,-1,-1;L_620
"Grauerle" true true false 4 Long 0
0 ,First,#,Q:\prjdata\biosfera\habitalp_sr\gis_work\mue stair_20121115.gdb\snp_vm_merge\habitat_snp_vm_merge_121115,L_620,-1,-1;L_630
"Grueerle" true true false 4 Long 0
0 ,First,#,Q:\prjdata\biosfera\habitalp_sr\gis_work\mue stair_20121115.gdb\snp_vm_merge\habitat_snp_vm_merge_121115,L_630,-1,-1;DW_U
"Totholzanteil stehend" true true false 4 Long 0
0 ,First,#,Q:\prjdata\biosfera\habitalp_sr\gis_work\mue stair_20121115.gdb\snp_vm_merge\habitat_snp_vm_merge_121115,DW_U,-1,-1;DW_L
"Totholzanteil liegend" true true false 4 Long 0
0 ,First,#,Q:\prjdata\biosfera\habitalp_sr\gis_work\mue stair_20121115.gdb\snp_vm_merge\habitat_snp_vm_merge_121115,DW_L,-1,-
1;CDRemark "Change: Bemerkung" true true false 200 Text 0
0 ,First,#,Q:\prjdata\biosfera\habitalp_sr\gis_work\mue stair_20121115.gdb\snp_vm_merge\habitat_snp_vm_merge_121115,CDRemark,-1,-
1;A_DQ "Qualitaet" true true false 4 Long 0
0 ,First,#,Q:\prjdata\biosfera\habitalp_sr\gis_work\mue stair_20121115.gdb\snp_vm_merge\habitat_snp_vm_merge_121115,A_DQ,-1,-
1;A_Status "Status Bearbeitung" true true false 4 Long 0
0 ,First,#,Q:\prjdata\biosfera\habitalp_sr\gis_work\mue stair_20121115.gdb\snp_vm_merge\habitat_snp_vm_merge_121115,A_Status,-1,-
1;Bemerkungen "Bemerkungen" true true false 50 Text 0
0 ,First,#,Q:\prjdata\biosfera\habitalp_sr\gis_work\mue stair_20121115.gdb\snp_vm_merge\habitat_snp_vm_merge_121115,Bemerkungen,-1,-
1;Shape_Length "Shape Length" false true true 8 Double 0
0 ,First,#,Q:\prjdata\biosfera\habitalp_sr\gis_work\mue stair_20121115.gdb\snp_vm_merge\habitat_snp_vm_merge_121115,Shape_Length,-1,-
1;Shape_Area "Shape Area" false true true 8 Double 0
0 ,First,#,Q:\prjdata\biosfera\habitalp_sr\gis_work\mue stair_20121115.gdb\snp_vm_merge\habitat_snp_vm_merge_121115,Shape_Area,-1,-
1;domain_test "domain test" true true false 4 Long 0
0 ,First,#,Q:\prjdata\biosfera\habitalp_sr\gis_work\mue stair_20121115.gdb\snp_vm_merge\habitat_snp_vm_merge_121115,domain_test,-1,-
1;test_dom_2 "test dom 2" true true false 4 Long 0
0 ,First,#,Q:\prjdata\biosfera\habitalp_sr\gis_work\mue stair_20121115.gdb\snp_vm_merge\habitat_snp_vm_merge_121115,test_dom_2,-1,-
1;Domain_Test_1 "Domain Test 1" true true false 4 Long 0
0 ,First,#,Q:\prjdata\biosfera\habitalp_sr\gis_work\mue stair_20121115.gdb\snp_vm_merge\habitat_snp_vm_merge_121115,Domain_Test_1,-1,-
```

```

1" #
INCLUDE IN LINEAGE WHEN EXPORTING METADATA No

PROCESS
PROCESS NAME
DATE 2012-11-27 10:42:00
TOOL LOCATION c:\program files (x86)\arcgis\desktop10.0\ArcToolbox\Toolboxes\Conversion Tools.tbx\FeatureClassToFeatureClass
COMMAND ISSUED
FeatureClassToFeatureClass Q:\prjdata\biosfera\habitalp_sr\gis_work\muestair_20121115.gdb\habitat_snp_vm_merge_121126
Q:\prjdata\biosfera\habitalp_sr\gis_work\muestair_20121115.gdb\habitat_snp_vm_merge_121126.testpytho # "HC "Habitat-CLASS" true true
false 4 Long 0 0 ,First,#,Q:\prjdata\biosfera\habitalp_sr\gis_work\muestair_20121115.gdb\habitat_snp_vm_merge_121126,HC,-1,-1;HT
"Habitat-TYPE" true true false 4 Long 0
0 ,First,#,Q:\prjdata\biosfera\habitalp_sr\gis_work\muestair_20121115.gdb\habitat_snp_vm_merge_121126,HT,-1,-1;DC_WATER "Water" true
true false 4 Long 0 0 ,First,#,Q:\prjdata\biosfera\habitalp_sr\gis_work\muestair_20121115.gdb\habitat_snp_vm_merge_121126,DC_WATER,-
1,-1;DC_ROCK "Rock" true true false 4 Long 0
0 ,First,#,Q:\prjdata\biosfera\habitalp_sr\gis_work\muestair_20121115.gdb\habitat_snp_vm_merge_121126,DC_ROCK,-1,-1;DC_SCREE "Scree"
true true false 4 Long 0
0 ,First,#,Q:\prjdata\biosfera\habitalp_sr\gis_work\muestair_20121115.gdb\habitat_snp_vm_merge_121126,DC_SCREE,-1,-1;DC_GH "Grass,
Herbs" true true false 4 Long 0
0 ,First,#,Q:\prjdata\biosfera\habitalp_sr\gis_work\muestair_20121115.gdb\habitat_snp_vm_merge_121126,DC_GH,-1,-1;DC_DS "Dwarf, Fern,
big Perennial Herbs" true true false 4 Long 0
0 ,First,#,Q:\prjdata\biosfera\habitalp_sr\gis_work\muestair_20121115.gdb\habitat_snp_vm_merge_121126,DC_DS,-1,-1;DC_SHRUBS "Shrubs"
true true false 4 Long 0
0 ,First,#,Q:\prjdata\biosfera\habitalp_sr\gis_work\muestair_20121115.gdb\habitat_snp_vm_merge_121126,DC_SHRUBS,-1,-1;DC_TREES
"Trees" true true false 4 Long 0
0 ,First,#,Q:\prjdata\biosfera\habitalp_sr\gis_work\muestair_20121115.gdb\habitat_snp_vm_merge_121126,DC_TREES,-1,-1;DC_SEALED
"Sealed Area" true true false 4 Long 0
0 ,First,#,Q:\prjdata\biosfera\habitalp_sr\gis_work\muestair_20121115.gdb\habitat_snp_vm_merge_121126,DC_SEALED,-1,-1;DC_BUILDNG
"Building Coverage" true true false 4 Long 0
0 ,First,#,Q:\prjdata\biosfera\habitalp_sr\gis_work\muestair_20121115.gdb\habitat_snp_vm_merge_121126,DC_BUILDNG,-1,-1;AC1 "Add.
Charact. 1" true true false 7 Text 0
0 ,First,#,Q:\prjdata\biosfera\habitalp_sr\gis_work\muestair_20121115.gdb\habitat_snp_vm_merge_121126,AC1,-1,-1;AC2 "Add. Charact. 2"
true true false 7 Text 0 0 ,First,#,Q:\prjdata\biosfera\habitalp_sr\gis_work\muestair_20121115.gdb\habitat_snp_vm_merge_121126,AC2,-
1,-1;AC3 "Add. Charact. 3" true true false 7 Text 0
0 ,First,#,Q:\prjdata\biosfera\habitalp_sr\gis_work\muestair_20121115.gdb\habitat_snp_vm_merge_121126,AC3,-1,-1;SP_HERB "Grass,
Herbs, ..." true true false 6 Text 0
0 ,First,#,Q:\prjdata\biosfera\habitalp_sr\gis_work\muestair_20121115.gdb\habitat_snp_vm_merge_121126,SP_HERB,-1,-1;SP_SHRUBS
"Shrubs" true true false 6 Text 0
0 ,First,#,Q:\prjdata\biosfera\habitalp_sr\gis_work\muestair_20121115.gdb\habitat_snp_vm_merge_121126,SP_SHRUBS,-1,-1;SP_TREES_D
"Deciduous" true true false 6 Text 0
0 ,First,#,Q:\prjdata\biosfera\habitalp_sr\gis_work\muestair_20121115.gdb\habitat_snp_vm_merge_121126,SP_TREES_D,-1,-1;SP_TREES_C
"Coniferous" true true false 6 Text 0
0 ,First,#,Q:\prjdata\biosfera\habitalp_sr\gis_work\muestair_20121115.gdb\habitat_snp_vm_merge_121126,SP_TREES_C,-1,-1;L_000
"Laubholz" true true false 4 Long 0
0 ,First,#,Q:\prjdata\biosfera\habitalp_sr\gis_work\muestair_20121115.gdb\habitat_snp_vm_merge_121126,L_000,-1,-1;L_100 "Buche" true
true false 4 Long 0 0 ,First,#,Q:\prjdata\biosfera\habitalp_sr\gis_work\muestair_20121115.gdb\habitat_snp_vm_merge_121126,L_100,-1,-
1;L_400 "Ahorn, Linde, Ulme" true true false 4 Long 0
0 ,First,#,Q:\prjdata\biosfera\habitalp_sr\gis_work\muestair_20121115.gdb\habitat_snp_vm_merge_121126,L_400,-1,-1;L_500 "Birke" true
true false 4 Long 0 0 ,First,#,Q:\prjdata\biosfera\habitalp_sr\gis_work\muestair_20121115.gdb\habitat_snp_vm_merge_121126,L_500,-1,-
1;L_600 "Erle" true true false 4 Long 0
0 ,First,#,Q:\prjdata\biosfera\habitalp_sr\gis_work\muestair_20121115.gdb\habitat_snp_vm_merge_121126,L_600,-1,-1;L_700 "Weide,
Pappel" true true false 4 Long 0
0 ,First,#,Q:\prjdata\biosfera\habitalp_sr\gis_work\muestair_20121115.gdb\habitat_snp_vm_merge_121126,L_700,-1,-1;L_001 "Div.
Laubholz" true true false 4 Long 0
0 ,First,#,Q:\prjdata\biosfera\habitalp_sr\gis_work\muestair_20121115.gdb\habitat_snp_vm_merge_121126,L_001,-1,-1;C_000 "Nadelholz"
true true false 4 Long 0
0 ,First,#,Q:\prjdata\biosfera\habitalp_sr\gis_work\muestair_20121115.gdb\habitat_snp_vm_merge_121126,C_000,-1,-1;C_100 "Fichte" true
true false 4 Long 0 0 ,First,#,Q:\prjdata\biosfera\habitalp_sr\gis_work\muestair_20121115.gdb\habitat_snp_vm_merge_121126,C_100,-1,-
1;C_310 "Waldföhre" true true false 4 Long 0
0 ,First,#,Q:\prjdata\biosfera\habitalp_sr\gis_work\muestair_20121115.gdb\habitat_snp_vm_merge_121126,C_310,-1,-1;C_330 "Arve/Zirbe"
true true false 4 Long 0
0 ,First,#,Q:\prjdata\biosfera\habitalp_sr\gis_work\muestair_20121115.gdb\habitat_snp_vm_merge_121126,C_330,-1,-1;C_341 "Legföhre"
true true false 4 Long 0
0 ,First,#,Q:\prjdata\biosfera\habitalp_sr\gis_work\muestair_20121115.gdb\habitat_snp_vm_merge_121126,C_341,-1,-1;C_342 "Bergföhre
(Spirke)" true true false 4 Long 0
0 ,First,#,Q:\prjdata\biosfera\habitalp_sr\gis_work\muestair_20121115.gdb\habitat_snp_vm_merge_121126,C_342,-1,-1;C_700 "Lärche" true
true false 4 Long 0 0 ,First,#,Q:\prjdata\biosfera\habitalp_sr\gis_work\muestair_20121115.gdb\habitat_snp_vm_merge_121126,C_700,-1,-
1;C_001 "Div. Nadelholz" true true false 4 Long 0
0 ,First,#,Q:\prjdata\biosfera\habitalp_sr\gis_work\muestair_20121115.gdb\habitat_snp_vm_merge_121126,C_001,-1,-1;REMARKS "REMARKS"
true true false 200 Text 0
0 ,First,#,Q:\prjdata\biosfera\habitalp_sr\gis_work\muestair_20121115.gdb\habitat_snp_vm_merge_121126,REMARKS,-1,-1;DI_DT_U
"Stehendes Totholz" true true false 4 Long 0
0 ,First,#,Q:\prjdata\biosfera\habitalp_sr\gis_work\muestair_20121115.gdb\habitat_snp_vm_merge_121126,DI_DT_U,-1,-1;DI_DT_D
"Liegendes Totholz" true true false 4 Long 0
0 ,First,#,Q:\prjdata\biosfera\habitalp_sr\gis_work\muestair_20121115.gdb\habitat_snp_vm_merge_121126,DI_DT_D,-1,-1;DI_TYPE "DI_Type"
true true false 4 Long 0
0 ,First,#,Q:\prjdata\biosfera\habitalp_sr\gis_work\muestair_20121115.gdb\habitat_snp_vm_merge_121126,DI_TYPE,-1,-1;DI_REMARK
"DI_REMARK" true true false 200 Text 0
0 ,First,#,Q:\prjdata\biosfera\habitalp_sr\gis_work\muestair_20121115.gdb\habitat_snp_vm_merge_121126,DI_REMARK,-1,-1;DQ "Data
Quality" true true false 4 Long 0
0 ,First,#,Q:\prjdata\biosfera\habitalp_sr\gis_work\muestair_20121115.gdb\habitat_snp_vm_merge_121126,DQ,-1,-
1;FIELD_VERIFICATION_DATE "FIELD_VERIFICATION_DATE" true true false 8 Date 0
0 ,First,#,Q:\prjdata\biosfera\habitalp_sr\gis_work\muestair_20121115.gdb\habitat_snp_vm_merge_121126,FIELD_VERIFICATION_DATE,-1,-
1;FOTO "FOTO" true true false 50 Text 0
0 ,First,#,Q:\prjdata\biosfera\habitalp_sr\gis_work\muestair_20121115.gdb\habitat_snp_vm_merge_121126,FOTO,-1,-1;Kontrolle
"Kontrolle" true true false 50 Text 0
0 ,First,#,Q:\prjdata\biosfera\habitalp_sr\gis_work\muestair_20121115.gdb\habitat_snp_vm_merge_121126,Kontrolle,-1,-1;snp_ID_alt
"snp_ID_alt" true true false 4 Long 0
0 ,First,#,Q:\prjdata\biosfera\habitalp_sr\gis_work\muestair_20121115.gdb\habitat_snp_vm_merge_121126,snp_ID_alt,-1,-1;vm_ID_alt
"vm_ID_alt" true true false 4 Long 0
0 ,First,#,Q:\prjdata\biosfera\habitalp_sr\gis_work\muestair_20121115.gdb\habitat_snp_vm_merge_121126,vm_ID_alt,-1,-1;DC_Soil "DG
Erdboden" true true false 4 Long 0
0 ,First,#,Q:\prjdata\biosfera\habitalp_sr\gis_work\muestair_20121115.gdb\habitat_snp_vm_merge_121126,DC_Soil,-1,-1;DC_Herbs "DG
Gras, Krautschicht" true true false 4 Long 0
0 ,First,#,Q:\prjdata\biosfera\habitalp_sr\gis_work\muestair_20121115.gdb\habitat_snp_vm_merge_121126,DC_Herbs,-1,-1;DC_Dwarf "DG
Zwergsträucher" true true false 4 Long 0
0 ,First,#,Q:\prjdata\biosfera\habitalp_sr\gis_work\muestair_20121115.gdb\habitat_snp_vm_merge_121126,DC_Dwarf,-1,-1;SP_Herbs "Dom-
Art Gras-, Kraut-, Zwergsträucher" true true false 6 Text 0
0 ,First,#,Q:\prjdata\biosfera\habitalp_sr\gis_work\muestair_20121115.gdb\habitat_snp_vm_merge_121126,SP_Herbs,-1,-1;L_200 "Eiche"
true true false 4 Long 0
0 ,First,#,Q:\prjdata\biosfera\habitalp_sr\gis_work\muestair_20121115.gdb\habitat_snp_vm_merge_121126,L_200,-1,-1;L_620 "Grauerle"
true true false 4 Long 0
0 ,First,#,Q:\prjdata\biosfera\habitalp_sr\gis_work\muestair_20121115.gdb\habitat_snp_vm_merge_121126,L_620,-1,-1;L_630 "Grünerle"
true true false 4 Long 0
0 ,First,#,Q:\prjdata\biosfera\habitalp_sr\gis_work\muestair_20121115.gdb\habitat_snp_vm_merge_121126,L_630,-1,-1;DW_U "Totholzanteil
stehend" true true false 4 Long 0
0 ,First,#,Q:\prjdata\biosfera\habitalp_sr\gis_work\muestair_20121115.gdb\habitat_snp_vm_merge_121126,DW_U,-1,-1;DW_L "Totholzanteil
liegend" true true false 4 Long 0
0 ,First,#,Q:\prjdata\biosfera\habitalp_sr\gis_work\muestair_20121115.gdb\habitat_snp_vm_merge_121126,DW_L,-1,-1;CDRemark "Change:
Bemerkung" true true false 200 Text 0
0 ,First,#,Q:\prjdata\biosfera\habitalp_sr\gis_work\muestair_20121115.gdb\habitat_snp_vm_merge_121126,CDRemark,-1,-1;A_DQ "Qualität"

```

```

true true false 4 Long 0 ,First,#,Q:\prjdata\biosfera\habitalp_sr\gis_work\muestair_20121115.gdb\habitat_snp_vm_merge_121126,A_DQ,-
1,-1;A_Status "Status Bearbeitung" true true false 4 Long 0
0 ,First,#,Q:\prjdata\biosfera\habitalp_sr\gis_work\muestair_20121115.gdb\habitat_snp_vm_merge_121126,A_Status,-1,-1;Bemerkungen
"Bemerkungen" true true false 50 Text 0
0 ,First,#,Q:\prjdata\biosfera\habitalp_sr\gis_work\muestair_20121115.gdb\habitat_snp_vm_merge_121126,Bemerkungen,-1,-1;domain_test
"domain test" true true false 4 Long 0
0 ,First,#,Q:\prjdata\biosfera\habitalp_sr\gis_work\muestair_20121115.gdb\habitat_snp_vm_merge_121126,domain_test,-1,-1;test_dom_2
"test_dom_2" true true false 4 Long 0
0 ,First,#,Q:\prjdata\biosfera\habitalp_sr\gis_work\muestair_20121115.gdb\habitat_snp_vm_merge_121126,test_dom_2,-1,-1;Domain_Test_1
"Domain_Test_1" true true false 4 Long 0
0 ,First,#,Q:\prjdata\biosfera\habitalp_sr\gis_work\muestair_20121115.gdb\habitat_snp_vm_merge_121126,Domain_Test_1,-1,-
1;Shape_Length "Shape_Length" false true true 8 Double 0
0 ,First,#,Q:\prjdata\biosfera\habitalp_sr\gis_work\muestair_20121115.gdb\habitat_snp_vm_merge_121126,Shape_Length,-1,-1;Shape_Area
"Shape_Area" false true true 8 Double 0
0 ,First,#,Q:\prjdata\biosfera\habitalp_sr\gis_work\muestair_20121115.gdb\habitat_snp_vm_merge_121126,Shape_Area,-1,-1" #
INCLUDE IN LINEAGE WHEN EXPORTING METADATA No

```

## PROCESS

```

PROCESS NAME
DATE 2012-11-27 11:25:17
TOOL LOCATION C:\Program Files (x86)\ArcGIS\Desktop10.0\ArcToolbox\Toolboxes\Data Management Tools.tbx\CalculateField
COMMAND ISSUED
CalculateField habitat_snp_vm_merge_121126_testpython HT "Mid([HT],1,1) & "0" & Mid([HT],3,2)" VB #
INCLUDE IN LINEAGE WHEN EXPORTING METADATA No

```

## PROCESS

```

PROCESS NAME
DATE 2012-11-27 15:51:36
TOOL LOCATION c:\program files (x86)\arcgis\desktop10.0\ArcToolbox\Toolboxes\Conversion Tools.tbx\FeatureClassToFeatureClass
COMMAND ISSUED
FeatureClassToFeatureClass Q:\prjdata\biosfera\habitalp_sr\gis_work\muestair_20121115.gdb\habitat_snp_vm_merge_121126_testpython
Q:\prjdata\biosfera\habitalp_sr\gis_work\muestair_20121127a.gdb\habitat_snp_vm_merge_121127a_testpython # "HC "Habitat-CLASS" true
true false 4 Long 0
0 ,First,#,Q:\prjdata\biosfera\habitalp_sr\gis_work\muestair_20121115.gdb\habitat_snp_vm_merge_121126_testpython,HC,-1,-1;HT
"Habitat-TYPE" true true false 4 Long 0
0 ,First,#,Q:\prjdata\biosfera\habitalp_sr\gis_work\muestair_20121115.gdb\habitat_snp_vm_merge_121126_testpython,HT,-1,-1;DC_WATER
"Water" true true false 4 Long 0
0 ,First,#,Q:\prjdata\biosfera\habitalp_sr\gis_work\muestair_20121115.gdb\habitat_snp_vm_merge_121126_testpython,DC_WATER,-1,-
1;DC_ROCK "Rock" true true false 4 Long 0
0 ,First,#,Q:\prjdata\biosfera\habitalp_sr\gis_work\muestair_20121115.gdb\habitat_snp_vm_merge_121126_testpython,DC_ROCK,-1,-
1;DC_SCREE "Scree" true true false 4 Long 0
0 ,First,#,Q:\prjdata\biosfera\habitalp_sr\gis_work\muestair_20121115.gdb\habitat_snp_vm_merge_121126_testpython,DC_SCREE,-1,-1;DC_GH
"Grass, Herbs" true true false 4 Long 0
0 ,First,#,Q:\prjdata\biosfera\habitalp_sr\gis_work\muestair_20121115.gdb\habitat_snp_vm_merge_121126_testpython,DC_GH,-1,-1;DC_DS
"Dwarf, Fern, big Perennial Herbs" true true false 4 Long 0
0 ,First,#,Q:\prjdata\biosfera\habitalp_sr\gis_work\muestair_20121115.gdb\habitat_snp_vm_merge_121126_testpython,DC_DS,-1,-
1;DC_SHRUBS "Shrubs" true true false 4 Long 0
0 ,First,#,Q:\prjdata\biosfera\habitalp_sr\gis_work\muestair_20121115.gdb\habitat_snp_vm_merge_121126_testpython,DC_SHRUBS,-1,-
1;DC_TREES "Trees" true true false 4 Long 0
0 ,First,#,Q:\prjdata\biosfera\habitalp_sr\gis_work\muestair_20121115.gdb\habitat_snp_vm_merge_121126_testpython,DC_TREES,-1,-
1;DC_SEALED "Sealed Area" true true false 4 Long 0
0 ,First,#,Q:\prjdata\biosfera\habitalp_sr\gis_work\muestair_20121115.gdb\habitat_snp_vm_merge_121126_testpython,DC_SEALED,-1,-
1;DC_BUILDNG "Building Coverage" true true false 4 Long 0
0 ,First,#,Q:\prjdata\biosfera\habitalp_sr\gis_work\muestair_20121115.gdb\habitat_snp_vm_merge_121126_testpython,DC_BUILDNG,-1,-1;AC1
"Add. Charact. 1" true true false 7 Text 0
0 ,First,#,Q:\prjdata\biosfera\habitalp_sr\gis_work\muestair_20121115.gdb\habitat_snp_vm_merge_121126_testpython,AC1,-1,-1;AC2 "Add.
Charact. 2" true true false 7 Text 0
0 ,First,#,Q:\prjdata\biosfera\habitalp_sr\gis_work\muestair_20121115.gdb\habitat_snp_vm_merge_121126_testpython,AC2,-1,-1;AC3 "Add.
Charact. 3" true true false 7 Text 0
0 ,First,#,Q:\prjdata\biosfera\habitalp_sr\gis_work\muestair_20121115.gdb\habitat_snp_vm_merge_121126_testpython,AC3,-1,-1;SP_HERB
"Grass, Herbs, ..." true true false 6 Text 0
0 ,First,#,Q:\prjdata\biosfera\habitalp_sr\gis_work\muestair_20121115.gdb\habitat_snp_vm_merge_121126_testpython,SP_HERB,-1,-
1;SP_SHRUBS "Shrubs" true true false 6 Text 0
0 ,First,#,Q:\prjdata\biosfera\habitalp_sr\gis_work\muestair_20121115.gdb\habitat_snp_vm_merge_121126_testpython,SP_SHRUBS,-1,-
1;SP_TREES "Deciduous" true true false 6 Text 0
0 ,First,#,Q:\prjdata\biosfera\habitalp_sr\gis_work\muestair_20121115.gdb\habitat_snp_vm_merge_121126_testpython,SP_TREES_D,-1,-
1;SP_TREES_C "Coniferous" true true false 6 Text 0
0 ,First,#,Q:\prjdata\biosfera\habitalp_sr\gis_work\muestair_20121115.gdb\habitat_snp_vm_merge_121126_testpython,SP_TREES_C,-1,-
1;L_000 "Laubholz" true true false 4 Long 0
0 ,First,#,Q:\prjdata\biosfera\habitalp_sr\gis_work\muestair_20121115.gdb\habitat_snp_vm_merge_121126_testpython,L_000,-1,-1;L_100
"Buche" true true false 4 Long 0
0 ,First,#,Q:\prjdata\biosfera\habitalp_sr\gis_work\muestair_20121115.gdb\habitat_snp_vm_merge_121126_testpython,L_100,-1,-1;L_400
"Ahorn, Linde, Ulme" true true false 4 Long 0
0 ,First,#,Q:\prjdata\biosfera\habitalp_sr\gis_work\muestair_20121115.gdb\habitat_snp_vm_merge_121126_testpython,L_400,-1,-1;L_500
"Birke" true true false 4 Long 0
0 ,First,#,Q:\prjdata\biosfera\habitalp_sr\gis_work\muestair_20121115.gdb\habitat_snp_vm_merge_121126_testpython,L_500,-1,-1;L_600
"Erle" true true false 4 Long 0
0 ,First,#,Q:\prjdata\biosfera\habitalp_sr\gis_work\muestair_20121115.gdb\habitat_snp_vm_merge_121126_testpython,L_600,-1,-1;L_700
"Weide, Pappel" true true false 4 Long 0
0 ,First,#,Q:\prjdata\biosfera\habitalp_sr\gis_work\muestair_20121115.gdb\habitat_snp_vm_merge_121126_testpython,L_700,-1,-1;L_001
"Div. Laubholz" true true false 4 Long 0
0 ,First,#,Q:\prjdata\biosfera\habitalp_sr\gis_work\muestair_20121115.gdb\habitat_snp_vm_merge_121126_testpython,L_001,-1,-1;C_000
"Nadelholz" true true false 4 Long 0
0 ,First,#,Q:\prjdata\biosfera\habitalp_sr\gis_work\muestair_20121115.gdb\habitat_snp_vm_merge_121126_testpython,C_000,-1,-1;C_100
"Fichte" true true false 4 Long 0
0 ,First,#,Q:\prjdata\biosfera\habitalp_sr\gis_work\muestair_20121115.gdb\habitat_snp_vm_merge_121126_testpython,C_100,-1,-1;C_310
"Waldföhre" true true false 4 Long 0
0 ,First,#,Q:\prjdata\biosfera\habitalp_sr\gis_work\muestair_20121115.gdb\habitat_snp_vm_merge_121126_testpython,C_310,-1,-1;C_330
"Arve/Zirbe" true true false 4 Long 0
0 ,First,#,Q:\prjdata\biosfera\habitalp_sr\gis_work\muestair_20121115.gdb\habitat_snp_vm_merge_121126_testpython,C_330,-1,-1;C_341
"Legföhre" true true false 4 Long 0
0 ,First,#,Q:\prjdata\biosfera\habitalp_sr\gis_work\muestair_20121115.gdb\habitat_snp_vm_merge_121126_testpython,C_341,-1,-1;C_342
"Bergföhre (Spirke)" true true false 4 Long 0
0 ,First,#,Q:\prjdata\biosfera\habitalp_sr\gis_work\muestair_20121115.gdb\habitat_snp_vm_merge_121126_testpython,C_342,-1,-1;C_700
"Lärche" true true false 4 Long 0
0 ,First,#,Q:\prjdata\biosfera\habitalp_sr\gis_work\muestair_20121115.gdb\habitat_snp_vm_merge_121126_testpython,C_700,-1,-1;C_001
"Div. Nadelholz" true true false 4 Long 0
0 ,First,#,Q:\prjdata\biosfera\habitalp_sr\gis_work\muestair_20121115.gdb\habitat_snp_vm_merge_121126_testpython,C_001,-1,-1;REMARKS
"REMARKS" true true false 200 Text 0
0 ,First,#,Q:\prjdata\biosfera\habitalp_sr\gis_work\muestair_20121115.gdb\habitat_snp_vm_merge_121126_testpython,REMARKS,-1,-
1;DI_DT_U "Stehendes Totholz" true true false 4 Long 0
0 ,First,#,Q:\prjdata\biosfera\habitalp_sr\gis_work\muestair_20121115.gdb\habitat_snp_vm_merge_121126_testpython,DI_DT_U,-1,-
1;DI_DT_D "Liegendes Totholz" true true false 4 Long 0
0 ,First,#,Q:\prjdata\biosfera\habitalp_sr\gis_work\muestair_20121115.gdb\habitat_snp_vm_merge_121126_testpython,DI_DT_D,-1,-
1;DI_TYPE "DI_Type" true true false 4 Long 0
0 ,First,#,Q:\prjdata\biosfera\habitalp_sr\gis_work\muestair_20121115.gdb\habitat_snp_vm_merge_121126_testpython,DI_TYPE,-1,-
1;DI_REMARK "DI_REMARK" true true false 200 Text 0
0 ,First,#,Q:\prjdata\biosfera\habitalp_sr\gis_work\muestair_20121115.gdb\habitat_snp_vm_merge_121126_testpython,DI_REMARK,-1,-1;DQ
"Data Quality" true true false 4 Long 0
0 ,First,#,Q:\prjdata\biosfera\habitalp_sr\gis_work\muestair_20121115.gdb\habitat_snp_vm_merge_121126_testpython,DQ,-1,-
1;FIELD_VERIFICATION_DATE "FIELD_VERIFICATION_DATE" true true false 8 Date 0

```

```

0 ,First,#,Q:\prjdata\biosfera\habitalp_sr\gis_work\mue stair_20121115.gdb\habitat_snp_vm_merge_121126_testpython,FIELD_VERIFICATION_D
-1,-1;FOTO "FOTO" true true false 50 Text 0
0 ,First,#,Q:\prjdata\biosfera\habitalp_sr\gis_work\mue stair_20121115.gdb\habitat_snp_vm_merge_121126_testpython,FOTO,-1,-1;Kontrolle
"Kontrolle" true true false 50 Text 0
0 ,First,#,Q:\prjdata\biosfera\habitalp_sr\gis_work\mue stair_20121115.gdb\habitat_snp_vm_merge_121126_testpython,Kontrolle,-1,-
1;snp_ID alt "snp_ID alt" true true false 4 Long 0
0 ,First,#,Q:\prjdata\biosfera\habitalp_sr\gis_work\mue stair_20121115.gdb\habitat_snp_vm_merge_121126_testpython,snp_ID_alt,-1,-
1;vm_ID alt "vm_ID alt" true true false 4 Long 0
0 ,First,#,Q:\prjdata\biosfera\habitalp_sr\gis_work\mue stair_20121115.gdb\habitat_snp_vm_merge_121126_testpython,vm_ID_alt,-1,-
1;DC Soil "DG Erdboden" true true false 4 Long 0
0 ,First,#,Q:\prjdata\biosfera\habitalp_sr\gis_work\mue stair_20121115.gdb\habitat_snp_vm_merge_121126_testpython,DC_Soil,-1,-
1;DC Herbs "DG Gras, Krautschicht" true true false 4 Long 0
0 ,First,#,Q:\prjdata\biosfera\habitalp_sr\gis_work\mue stair_20121115.gdb\habitat_snp_vm_merge_121126_testpython,DC_Herbs,-1,-
1;DC Dwarf "DG Zwergstrucher" true true false 4 Long 0
0 ,First,#,Q:\prjdata\biosfera\habitalp_sr\gis_work\mue stair_20121115.gdb\habitat_snp_vm_merge_121126_testpython,DC_Dwarf,-1,-
1;SP Herbs "Dom Art Gras-, Kraut-, Zwergstrucher" true true false 6 Text 0
0 ,First,#,Q:\prjdata\biosfera\habitalp_sr\gis_work\mue stair_20121115.gdb\habitat_snp_vm_merge_121126_testpython,SP_Herbs,-1,-1;L_200
"Eiche" true true false 4 Long 0
0 ,First,#,Q:\prjdata\biosfera\habitalp_sr\gis_work\mue stair_20121115.gdb\habitat_snp_vm_merge_121126_testpython,L_200,-1,-1;L_620
"Grauerle" true true false 4 Long 0
0 ,First,#,Q:\prjdata\biosfera\habitalp_sr\gis_work\mue stair_20121115.gdb\habitat_snp_vm_merge_121126_testpython,L_620,-1,-1;L_630
"Gruerle" true true false 4 Long 0
0 ,First,#,Q:\prjdata\biosfera\habitalp_sr\gis_work\mue stair_20121115.gdb\habitat_snp_vm_merge_121126_testpython,L_630,-1,-1;DW_U
"Totholzanteil stehend" true true false 4 Long 0
0 ,First,#,Q:\prjdata\biosfera\habitalp_sr\gis_work\mue stair_20121115.gdb\habitat_snp_vm_merge_121126_testpython,DW_U,-1,-1;DW_L
"Totholzanteil liegend" true true false 4 Long 0
0 ,First,#,Q:\prjdata\biosfera\habitalp_sr\gis_work\mue stair_20121115.gdb\habitat_snp_vm_merge_121126_testpython,DW_L,-1,-1;CDRemark
"Change: Bemerkung" true true false 200 Text 0
0 ,First,#,Q:\prjdata\biosfera\habitalp_sr\gis_work\mue stair_20121115.gdb\habitat_snp_vm_merge_121126_testpython,CDRemark,-1,-1;A_DQ
"Qualitat" true true false 4 Long 0
0 ,First,#,Q:\prjdata\biosfera\habitalp_sr\gis_work\mue stair_20121115.gdb\habitat_snp_vm_merge_121126_testpython,A_DQ,-1,-1;A_Status
"Status Bearbeitung" true true false 4 Long 0
0 ,First,#,Q:\prjdata\biosfera\habitalp_sr\gis_work\mue stair_20121115.gdb\habitat_snp_vm_merge_121126_testpython,A_Status,-1,-
1;Bemerkungen "Bemerkungen" true true false 50 Text 0
0 ,First,#,Q:\prjdata\biosfera\habitalp_sr\gis_work\mue stair_20121115.gdb\habitat_snp_vm_merge_121126_testpython,Bemerkungen,-1,-
1;domain_test "domain test" true true false 4 Long 0
0 ,First,#,Q:\prjdata\biosfera\habitalp_sr\gis_work\mue stair_20121115.gdb\habitat_snp_vm_merge_121126_testpython,domain_test,-1,-
1;test_dom_2 "test_dom_2" true true false 4 Long 0
0 ,First,#,Q:\prjdata\biosfera\habitalp_sr\gis_work\mue stair_20121115.gdb\habitat_snp_vm_merge_121126_testpython,test_dom_2,-1,-
1;Domain_Test_1 "Domain_Test_1" true true false 4 Long 0
0 ,First,#,Q:\prjdata\biosfera\habitalp_sr\gis_work\mue stair_20121115.gdb\habitat_snp_vm_merge_121126_testpython,Domain_Test_1,-1,-
1;Shape_Length "Shape_Length" false true true 8 Double 0
0 ,First,#,Q:\prjdata\biosfera\habitalp_sr\gis_work\mue stair_20121115.gdb\habitat_snp_vm_merge_121126_testpython,Shape_Length,-1,-
1;Shape_Area "Shape_Area" false true true 8 Double 0
0 ,First,#,Q:\prjdata\biosfera\habitalp_sr\gis_work\mue stair_20121115.gdb\habitat_snp_vm_merge_121126_testpython,Shape_Area,-1,-1" #
INCLUDE IN LINEAGE WHEN EXPORTING METADATA No

```

## PROCESS

## PROCESS NAME

DATE 2012-12-13 14:41:21

TOOL LOCATION c:\program files (x86)\arcgis\desktop10.0\ArcToolbox\Toolboxes\Conversion Tools.tbx\FeatureClassToFeatureClass

## COMMAND ISSUED

```

FeatureClassToFeatureClass Q:\prjdata\biosfera\habitalp_sr\gis_work\mue stair_20121127a.gdb\habitat_snp_vm_merge_121127a_testpython
Q:\prjdata\biosfera\habitalp_sr\gis_work\mue stair_20121127a.gdb\habitalp_snp_vm_121213 # "HC "Habitat-CLASS" true true false 4 Long 0
0 ,First,#,Q:\prjdata\biosfera\habitalp_sr\gis_work\mue stair_20121127a.gdb\habitat_snp_vm_merge_121127a_testpython,HC,-1,-1;HT
"Habitat-TYPE" true true false 4 Long 0
0 ,First,#,Q:\prjdata\biosfera\habitalp_sr\gis_work\mue stair_20121127a.gdb\habitat_snp_vm_merge_121127a_testpython,HT,-1,-1;DC_WATER
"Water" true true false 4 Long 0
0 ,First,#,Q:\prjdata\biosfera\habitalp_sr\gis_work\mue stair_20121127a.gdb\habitat_snp_vm_merge_121127a_testpython,DC_WATER,-1,-
1;DC_ROCK "Rock" true true false 4 Long 0
0 ,First,#,Q:\prjdata\biosfera\habitalp_sr\gis_work\mue stair_20121127a.gdb\habitat_snp_vm_merge_121127a_testpython,DC_ROCK,-1,-
1;DC_SCREE "Scree" true true false 4 Long 0
0 ,First,#,Q:\prjdata\biosfera\habitalp_sr\gis_work\mue stair_20121127a.gdb\habitat_snp_vm_merge_121127a_testpython,DC_SCREE,-1,-
1;DC_GH "Grass, Herbs" true true false 4 Long 0
0 ,First,#,Q:\prjdata\biosfera\habitalp_sr\gis_work\mue stair_20121127a.gdb\habitat_snp_vm_merge_121127a_testpython,DC_GH,-1,-1;DC_DS
"Dwarf, Fern, big Perennial Herbs" true true false 4 Long 0
0 ,First,#,Q:\prjdata\biosfera\habitalp_sr\gis_work\mue stair_20121127a.gdb\habitat_snp_vm_merge_121127a_testpython,DC_DS,-1,-
1;DC_SHRUBS "Shrubs" true true false 4 Long 0
0 ,First,#,Q:\prjdata\biosfera\habitalp_sr\gis_work\mue stair_20121127a.gdb\habitat_snp_vm_merge_121127a_testpython,DC_SHRUBS,-1,-
1;DC_TREES "Trees" true true false 4 Long 0
0 ,First,#,Q:\prjdata\biosfera\habitalp_sr\gis_work\mue stair_20121127a.gdb\habitat_snp_vm_merge_121127a_testpython,DC_TREES,-1,-
1;DC_SEALED "Sealed Area" true true false 4 Long 0
0 ,First,#,Q:\prjdata\biosfera\habitalp_sr\gis_work\mue stair_20121127a.gdb\habitat_snp_vm_merge_121127a_testpython,DC_SEALED,-1,-
1;DC_BUILDNG "Building Coverage" true true false 4 Long 0
0 ,First,#,Q:\prjdata\biosfera\habitalp_sr\gis_work\mue stair_20121127a.gdb\habitat_snp_vm_merge_121127a_testpython,DC_BUILDNG,-1,-
1;AC1 "Add. Charact. 1" true true false 7 Text 0
0 ,First,#,Q:\prjdata\biosfera\habitalp_sr\gis_work\mue stair_20121127a.gdb\habitat_snp_vm_merge_121127a_testpython,AC1,-1,-1;AC2
"Add. Charact. 2" true true false 7 Text 0
0 ,First,#,Q:\prjdata\biosfera\habitalp_sr\gis_work\mue stair_20121127a.gdb\habitat_snp_vm_merge_121127a_testpython,AC2,-1,-1;AC3
"Add. Charact. 3" true true false 7 Text 0
0 ,First,#,Q:\prjdata\biosfera\habitalp_sr\gis_work\mue stair_20121127a.gdb\habitat_snp_vm_merge_121127a_testpython,AC3,-1,-1;SP_HERB
"Grass, Herbs, ..." true true false 6 Text 0
0 ,First,#,Q:\prjdata\biosfera\habitalp_sr\gis_work\mue stair_20121127a.gdb\habitat_snp_vm_merge_121127a_testpython,SP_HERB,-1,-
1;SP_SHRUBS "Shrubs" true true false 6 Text 0
0 ,First,#,Q:\prjdata\biosfera\habitalp_sr\gis_work\mue stair_20121127a.gdb\habitat_snp_vm_merge_121127a_testpython,SP_SHRUBS,-1,-
1;SP_TREES_D "Deciduous" true true false 6 Text 0
0 ,First,#,Q:\prjdata\biosfera\habitalp_sr\gis_work\mue stair_20121127a.gdb\habitat_snp_vm_merge_121127a_testpython,SP_TREES_D,-1,-
1;SP_TREES_C "Coniferous" true true false 6 Text 0
0 ,First,#,Q:\prjdata\biosfera\habitalp_sr\gis_work\mue stair_20121127a.gdb\habitat_snp_vm_merge_121127a_testpython,SP_TREES_C,-1,-
1;L_000 "Laubholz" true true false 4 Long 0
0 ,First,#,Q:\prjdata\biosfera\habitalp_sr\gis_work\mue stair_20121127a.gdb\habitat_snp_vm_merge_121127a_testpython,L_000,-1,-1;L_100
"Buche" true true false 4 Long 0
0 ,First,#,Q:\prjdata\biosfera\habitalp_sr\gis_work\mue stair_20121127a.gdb\habitat_snp_vm_merge_121127a_testpython,L_100,-1,-1;L_400
"Ahorn, Linde, Ulme" true true false 4 Long 0
0 ,First,#,Q:\prjdata\biosfera\habitalp_sr\gis_work\mue stair_20121127a.gdb\habitat_snp_vm_merge_121127a_testpython,L_400,-1,-1;L_500
"Birke" true true false 4 Long 0
0 ,First,#,Q:\prjdata\biosfera\habitalp_sr\gis_work\mue stair_20121127a.gdb\habitat_snp_vm_merge_121127a_testpython,L_500,-1,-1;L_600
"Erle" true true false 4 Long 0
0 ,First,#,Q:\prjdata\biosfera\habitalp_sr\gis_work\mue stair_20121127a.gdb\habitat_snp_vm_merge_121127a_testpython,L_600,-1,-1;L_700
"Weide, Pappel" true true false 4 Long 0
0 ,First,#,Q:\prjdata\biosfera\habitalp_sr\gis_work\mue stair_20121127a.gdb\habitat_snp_vm_merge_121127a_testpython,L_700,-1,-1;L_001
"Div. Laubholz" true true false 4 Long 0
0 ,First,#,Q:\prjdata\biosfera\habitalp_sr\gis_work\mue stair_20121127a.gdb\habitat_snp_vm_merge_121127a_testpython,L_001,-1,-1;C_000
"Nadelholz" true true false 4 Long 0
0 ,First,#,Q:\prjdata\biosfera\habitalp_sr\gis_work\mue stair_20121127a.gdb\habitat_snp_vm_merge_121127a_testpython,C_000,-1,-1;C_100
"Fichte" true true false 4 Long 0
0 ,First,#,Q:\prjdata\biosfera\habitalp_sr\gis_work\mue stair_20121127a.gdb\habitat_snp_vm_merge_121127a_testpython,C_100,-1,-1;C_310
"Waldfohre" true true false 4 Long 0
0 ,First,#,Q:\prjdata\biosfera\habitalp_sr\gis_work\mue stair_20121127a.gdb\habitat_snp_vm_merge_121127a_testpython,C_310,-1,-1;C_330
"Arve/Zirbe" true true false 4 Long 0
0 ,First,#,Q:\prjdata\biosfera\habitalp_sr\gis_work\mue stair_20121127a.gdb\habitat_snp_vm_merge_121127a_testpython,C_330,-1,-1;C_341

```

```

"Legföhre" true true false 4 Long 0
0 ,First,#,Q:\prjdata\biosfera\habitalp_sr\gis_work\muestair_20121127a.gdb\habitat_snp_vm_merge_121127a_testpython,C_341,-1,-1;C_342
"Bergföhre (Spirke)" true true false 4 Long 0
0 ,First,#,Q:\prjdata\biosfera\habitalp_sr\gis_work\muestair_20121127a.gdb\habitat_snp_vm_merge_121127a_testpython,C_342,-1,-1;C_700
"Lärche" true true false 4 Long 0
0 ,First,#,Q:\prjdata\biosfera\habitalp_sr\gis_work\muestair_20121127a.gdb\habitat_snp_vm_merge_121127a_testpython,C_700,-1,-1;C_001
"Div. Nadelholz" true true false 4 Long 0
0 ,First,#,Q:\prjdata\biosfera\habitalp_sr\gis_work\muestair_20121127a.gdb\habitat_snp_vm_merge_121127a_testpython,C_001,-1,-
1;REMARKS "REMARKS" true true false 200 Text 0
0 ,First,#,Q:\prjdata\biosfera\habitalp_sr\gis_work\muestair_20121127a.gdb\habitat_snp_vm_merge_121127a_testpython,REMARKS,-1,-
1;DI_DT_U "Stehendes Totholz" true true false 4 Long 0
0 ,First,#,Q:\prjdata\biosfera\habitalp_sr\gis_work\muestair_20121127a.gdb\habitat_snp_vm_merge_121127a_testpython,DI_DT_U,-1,-
1;DI_DT_D "Liegendes Totholz" true true false 4 Long 0
0 ,First,#,Q:\prjdata\biosfera\habitalp_sr\gis_work\muestair_20121127a.gdb\habitat_snp_vm_merge_121127a_testpython,DI_DT_D,-1,-
1;DI_TYPE "DI_Type" true true false 4 Long 0
0 ,First,#,Q:\prjdata\biosfera\habitalp_sr\gis_work\muestair_20121127a.gdb\habitat_snp_vm_merge_121127a_testpython,DI_TYPE,-1,-
1;DI_REMARK "DI_REMARK" true true false 200 Text 0
0 ,First,#,Q:\prjdata\biosfera\habitalp_sr\gis_work\muestair_20121127a.gdb\habitat_snp_vm_merge_121127a_testpython,DI_REMARK,-1,-1;DQ
"Data Quality" true true false 4 Long 0
0 ,First,#,Q:\prjdata\biosfera\habitalp_sr\gis_work\muestair_20121127a.gdb\habitat_snp_vm_merge_121127a_testpython,DQ,-1,-
1;FIELD_VERIFICATION_DATE "FIELD_VERIFICATION_DATE" true true false 8 Date 0
0 ,First,#,Q:\prjdata\biosfera\habitalp_sr\gis_work\muestair_20121127a.gdb\habitat_snp_vm_merge_121127a_testpython,FIELD_VERIFICATION
-1,-1;FOTO "FOTO" true true false 50 Text 0
0 ,First,#,Q:\prjdata\biosfera\habitalp_sr\gis_work\muestair_20121127a.gdb\habitat_snp_vm_merge_121127a_testpython,FOTO,-1,-
1;Kontrolle "Kontrolle" true true false 50 Text 0
0 ,First,#,Q:\prjdata\biosfera\habitalp_sr\gis_work\muestair_20121127a.gdb\habitat_snp_vm_merge_121127a_testpython,Kontrolle,-1,-
1;snp_ID_alt "snp_ID_alt" true true false 4 Long 0
0 ,First,#,Q:\prjdata\biosfera\habitalp_sr\gis_work\muestair_20121127a.gdb\habitat_snp_vm_merge_121127a_testpython,snp_ID_alt,-1,-
1;vm_ID_alt "vm_ID_alt" true true false 4 Long 0
0 ,First,#,Q:\prjdata\biosfera\habitalp_sr\gis_work\muestair_20121127a.gdb\habitat_snp_vm_merge_121127a_testpython,vm_ID_alt,-1,-
1;DC_Soil "DG Erdboden" true true false 4 Long 0
0 ,First,#,Q:\prjdata\biosfera\habitalp_sr\gis_work\muestair_20121127a.gdb\habitat_snp_vm_merge_121127a_testpython,DC_Soil,-1,-
1;DC_Herbs "DG Gras, Krautschicht" true true false 4 Long 0
0 ,First,#,Q:\prjdata\biosfera\habitalp_sr\gis_work\muestair_20121127a.gdb\habitat_snp_vm_merge_121127a_testpython,DC_Herbs,-1,-
1;DC_Dwarf "DG Zwergsträucher" true true false 4 Long 0
0 ,First,#,Q:\prjdata\biosfera\habitalp_sr\gis_work\muestair_20121127a.gdb\habitat_snp_vm_merge_121127a_testpython,DC_Dwarf,-1,-
1;SP_Herbs "Dom Art Gras, Kraut-, Zwergsträucher" true true false 6 Text 0
0 ,First,#,Q:\prjdata\biosfera\habitalp_sr\gis_work\muestair_20121127a.gdb\habitat_snp_vm_merge_121127a_testpython,SP_Herbs,-1,-
1;L_200 "Eiche" true true false 4 Long 0
0 ,First,#,Q:\prjdata\biosfera\habitalp_sr\gis_work\muestair_20121127a.gdb\habitat_snp_vm_merge_121127a_testpython,L_200,-1,-1;L_620
"Grauerle" true true false 4 Long 0
0 ,First,#,Q:\prjdata\biosfera\habitalp_sr\gis_work\muestair_20121127a.gdb\habitat_snp_vm_merge_121127a_testpython,L_620,-1,-1;L_630
"Grünerle" true true false 4 Long 0
0 ,First,#,Q:\prjdata\biosfera\habitalp_sr\gis_work\muestair_20121127a.gdb\habitat_snp_vm_merge_121127a_testpython,L_630,-1,-1;DW_U
"Totholzanteil stehend" true true false 4 Long 0
0 ,First,#,Q:\prjdata\biosfera\habitalp_sr\gis_work\muestair_20121127a.gdb\habitat_snp_vm_merge_121127a_testpython,DW_U,-1,-1;DW_L
"Totholzanteil liegend" true true false 4 Long 0
0 ,First,#,Q:\prjdata\biosfera\habitalp_sr\gis_work\muestair_20121127a.gdb\habitat_snp_vm_merge_121127a_testpython,DW_L,-1,-
1;CDRemark "Change: Bemerkung" true true false 200 Text 0
0 ,First,#,Q:\prjdata\biosfera\habitalp_sr\gis_work\muestair_20121127a.gdb\habitat_snp_vm_merge_121127a_testpython,CDRemark,-1,-
1;A_DQ "Qualität" true true false 4 Long 0
0 ,First,#,Q:\prjdata\biosfera\habitalp_sr\gis_work\muestair_20121127a.gdb\habitat_snp_vm_merge_121127a_testpython,A_DQ,-1,-
1;A_Status "Status Bearbeitung" true true false 4 Long 0
0 ,First,#,Q:\prjdata\biosfera\habitalp_sr\gis_work\muestair_20121127a.gdb\habitat_snp_vm_merge_121127a_testpython,A_Status,-1,-
1;Bemerkungen "Bemerkungen" true true false 50 Text 0
0 ,First,#,Q:\prjdata\biosfera\habitalp_sr\gis_work\muestair_20121127a.gdb\habitat_snp_vm_merge_121127a_testpython,Bemerkungen,-1,-
1;domain_test "domain_test" true true false 4 Long 0
0 ,First,#,Q:\prjdata\biosfera\habitalp_sr\gis_work\muestair_20121127a.gdb\habitat_snp_vm_merge_121127a_testpython,domain_test,-1,-
1;test_dom_2 "test_dom_2" true true false 4 Long 0
0 ,First,#,Q:\prjdata\biosfera\habitalp_sr\gis_work\muestair_20121127a.gdb\habitat_snp_vm_merge_121127a_testpython,test_dom_2,-1,-
1;Domain_Test_1 "Domain Test 1" true true false 4 Long 0
0 ,First,#,Q:\prjdata\biosfera\habitalp_sr\gis_work\muestair_20121127a.gdb\habitat_snp_vm_merge_121127a_testpython,Domain_Test_1,-1,-
1;Shape_Length "Shape_Length" false true true 8 Double 0
0 ,First,#,Q:\prjdata\biosfera\habitalp_sr\gis_work\muestair_20121127a.gdb\habitat_snp_vm_merge_121127a_testpython,Shape_Length,-1,-
1;Shape_Area "Shape_Area" false true true 8 Double 0
0 ,First,#,Q:\prjdata\biosfera\habitalp_sr\gis_work\muestair_20121127a.gdb\habitat_snp_vm_merge_121127a_testpython,Shape_Area,-1,-1"
#

```

INCLUDE IN LINEAGE WHEN EXPORTING METADATA No

#### PROCESS

##### PROCESS NAME

DATE 2014-04-22 19:11:36

TOOL LOCATION C:\Programme\ArcGIS\Desktop10.0\ArcToolbox\Toolboxes\Conversion Tools.tbx\FeatureClassToFeatureClass

##### COMMAND ISSUED

```

FeatureClassToFeatureClass "Database Connections\Connection to snp.sde.parcs.ch.sde\MAIN_SNP_BOTANY.habitalp_snp_vm" "Database
Connections\Connection to 192.168.1.15.sde" habitalp_snp_vm # "C "Habitat-CLASS" true true false 4 Long 0 10 ,First,#,Database
Connections\Connection to snp.sde.parcs.ch.sde\MAIN_SNP_BOTANY.habitalp_snp_vm,HC,-1,-1;HT "Habitat-TYPE" true true false 4 Long 0
10 ,First,#,Database Connections\Connection to snp.sde.parcs.ch.sde\MAIN_SNP_BOTANY.habitalp_snp_vm,HT,-1,-1;DC_WATER "Water" true
true false 4 Long 0 10 ,First,#,Database Connections\Connection to snp.sde.parcs.ch.sde\MAIN_SNP_BOTANY.habitalp_snp_vm,DC_WATER,-1,-
1;DC_ROCK "Rock" true true false 4 Long 0 10 ,First,#,Database Connections\Connection to
snp.sde.parcs.ch.sde\MAIN_SNP_BOTANY.habitalp_snp_vm,DC_ROCK,-1,-1;DC_SCREE "Scree" true true false 4 Long 0 10 ,First,#,Database
Connections\Connection to snp.sde.parcs.ch.sde\MAIN_SNP_BOTANY.habitalp_snp_vm,DC_SCREE,-1,-1;DC_GH "Grass, Herbs" true true false 4
Long 0 10 ,First,#,Database Connections\Connection to snp.sde.parcs.ch.sde\MAIN_SNP_BOTANY.habitalp_snp_vm,DC_GH,-1,-1;DC_DS "Dwarf,
Fern, big Perennial Herbs" true true false 4 Long 0 10 ,First,#,Database Connections\Connection to
snp.sde.parcs.ch.sde\MAIN_SNP_BOTANY.habitalp_snp_vm,DC_DS,-1,-1;DC_SHRUBS "Shrubs" true true false 4 Long 0 10 ,First,#,Database
Connections\Connection to snp.sde.parcs.ch.sde\MAIN_SNP_BOTANY.habitalp_snp_vm,DC_SHRUBS,-1,-1;DC_TREES "Trees" true true false 4
Long 0 10 ,First,#,Database Connections\Connection to snp.sde.parcs.ch.sde\MAIN_SNP_BOTANY.habitalp_snp_vm,DC_TREES,-1,-1;DC_SEALED
"Sealed Area" true true false 4 Long 0 10 ,First,#,Database Connections\Connection to
snp.sde.parcs.ch.sde\MAIN_SNP_BOTANY.habitalp_snp_vm,DC_SEALED,-1,-1;DC_BUILDNG "Building Coverage" true true false 4 Long 0
10 ,First,#,Database Connections\Connection to snp.sde.parcs.ch.sde\MAIN_SNP_BOTANY.habitalp_snp_vm,DC_BUILDNG,-1,-1;AC1 "Add.
Charact. 1" true true false 7 Text 0 0 ,First,#,Database Connections\Connection to
snp.sde.parcs.ch.sde\MAIN_SNP_BOTANY.habitalp_snp_vm,AC1,-1,-1;AC2 "Add. Charact. 2" true true false 7 Text 0 0 ,First,#,Database
Connections\Connection to snp.sde.parcs.ch.sde\MAIN_SNP_BOTANY.habitalp_snp_vm,AC2,-1,-1;AC3 "Add. Charact. 3" true true false 7 Text
0 0 ,First,#,Database Connections\Connection to snp.sde.parcs.ch.sde\MAIN_SNP_BOTANY.habitalp_snp_vm,AC3,-1,-1;SP_HERB "Grass, Herbs,
..." true true false 6 Text 0 0 ,First,#,Database Connections\Connection to
snp.sde.parcs.ch.sde\MAIN_SNP_BOTANY.habitalp_snp_vm,SP_HERB,-1,-1;SP_SHRUBS "Shrubs" true true false 6 Text 0 0 ,First,#,Database
Connections\Connection to snp.sde.parcs.ch.sde\MAIN_SNP_BOTANY.habitalp_snp_vm,SP_SHRUBS,-1,-1;SP_TREES_D "Deciduous" true true false
6 Text 0 0 ,First,#,Database Connections\Connection to snp.sde.parcs.ch.sde\MAIN_SNP_BOTANY.habitalp_snp_vm,SP_TREES_D,-1,-
1;SP_TREES_C "Coniferous" true true false 6 Text 0 0 ,First,#,Database Connections\Connection to
snp.sde.parcs.ch.sde\MAIN_SNP_BOTANY.habitalp_snp_vm,SP_TREES_C,-1,-1;L_000 "Laubholz" true true false 4 Long 0 10 ,First,#,Database
Connections\Connection to snp.sde.parcs.ch.sde\MAIN_SNP_BOTANY.habitalp_snp_vm,L_000,-1,-1;L_100 "Buche" true true false 4 Long 0
10 ,First,#,Database Connections\Connection to snp.sde.parcs.ch.sde\MAIN_SNP_BOTANY.habitalp_snp_vm,L_100,-1,-1;L_400 "Ahorn, Linde,
Ulme" true true false 4 Long 0 10 ,First,#,Database Connections\Connection to
snp.sde.parcs.ch.sde\MAIN_SNP_BOTANY.habitalp_snp_vm,L_400,-1,-1;L_500 "Birke" true true false 4 Long 0 10 ,First,#,Database
Connections\Connection to snp.sde.parcs.ch.sde\MAIN_SNP_BOTANY.habitalp_snp_vm,L_500,-1,-1;L_600 "Erle" true true false 4 Long 0
10 ,First,#,Database Connections\Connection to snp.sde.parcs.ch.sde\MAIN_SNP_BOTANY.habitalp_snp_vm,L_600,-1,-1;L_700 "Weide, Pappel"
true true false 4 Long 0 10 ,First,#,Database Connections\Connection to snp.sde.parcs.ch.sde\MAIN_SNP_BOTANY.habitalp_snp_vm,L_700,-
1,-1;L_001 "Div. Laubholz" true true false 4 Long 0 10 ,First,#,Database Connections\Connection to
snp.sde.parcs.ch.sde\MAIN_SNP_BOTANY.habitalp_snp_vm,L_001,-1,-1;C_000 "Nadelholz" true true false 4 Long 0 10 ,First,#,Database
Connections\Connection to snp.sde.parcs.ch.sde\MAIN_SNP_BOTANY.habitalp_snp_vm,C_000,-1,-1;C_100 "Fichte" true true false 4 Long 0
10 ,First,#,Database Connections\Connection to snp.sde.parcs.ch.sde\MAIN_SNP_BOTANY.habitalp_snp_vm,C_100,-1,-1;C_310 "Waldföhre"

```



```

true true false 4 Long 0 10 ,First,#,Database Connections\Connection to snp.sde.parcs.ch.sde\MAIN_SNP_BOTANY.habitap_snp_vm,C_310,-
1,-1;C_330 "Arve/Zirbe" true true false 4 Long 0 10 ,First,#,Database Connections\Connection to
snp.sde.parcs.ch.sde\MAIN_SNP_BOTANY.habitap_snp_vm,C_330,-1,-1;C_341 "Legföhre" true true false 4 Long 0 10 ,First,#,Database
Connections\Connection to snp.sde.parcs.ch.sde\MAIN_SNP_BOTANY.habitap_snp_vm,C_341,-1,-1;C_342 "Bergföhre (Spirke)" true true false
4 Long 0 10 ,First,#,Database Connections\Connection to snp.sde.parcs.ch.sde\MAIN_SNP_BOTANY.habitap_snp_vm,C_342,-1,-1;C_700
"Lärche" true true false 4 Long 0 10 ,First,#,Database Connections\Connection to
snp.sde.parcs.ch.sde\MAIN_SNP_BOTANY.habitap_snp_vm,C_700,-1,-1;C_001 "Div. Nadelholz" true true false 4 Long 0 10 ,First,#,Database
Connections\Connection to snp.sde.parcs.ch.sde\MAIN_SNP_BOTANY.habitap_snp_vm,C_001,-1,-1;REMARKS "REMARKS" true true false 200 Text
0 0 ,First,#,Database Connections\Connection to snp.sde.parcs.ch.sde\MAIN_SNP_BOTANY.habitap_snp_vm,REMARKS,-1,-1;DI_DT_U "Stehendes
Totholz" true true false 4 Long 0 10 ,First,#,Database Connections\Connection to
snp.sde.parcs.ch.sde\MAIN_SNP_BOTANY.habitap_snp_vm,DI_DT_U,-1,-1;DI_DT_D "Liegendes Totholz" true true false 4 Long 0
10 ,First,#,Database Connections\Connection to snp.sde.parcs.ch.sde\MAIN_SNP_BOTANY.habitap_snp_vm,DI_DT_D,-1,-1;DI_TYPE "DI_Type"
true true false 4 Long 0 10 ,First,#,Database Connections\Connection to
snp.sde.parcs.ch.sde\MAIN_SNP_BOTANY.habitap_snp_vm,DI_TYPE,-1,-1;DI_REMARK "DI_REMARK" true true false 200 Text 0
0 ,First,#,Database Connections\Connection to snp.sde.parcs.ch.sde\MAIN_SNP_BOTANY.habitap_snp_vm,DI_REMARK,-1,-1;DQ "Data Quality"
true true false 4 Long 0 10 ,First,#,Database Connections\Connection to snp.sde.parcs.ch.sde\MAIN_SNP_BOTANY.habitap_snp_vm,DQ,-1,-
1;FIELD_VERIFICATION_DATE "FIELD_VERIFICATION_DATE" true true false 36 Date 0 0 ,First,#,Database Connections\Connection to
snp.sde.parcs.ch.sde\MAIN_SNP_BOTANY.habitap_snp_vm,FIELD_VERIFICATION_DATE,-1,-1;FOTO "FOTO" true true false 50 Text 0
0 ,First,#,Database Connections\Connection to snp.sde.parcs.ch.sde\MAIN_SNP_BOTANY.habitap_snp_vm,FOTO,-1,-1;KONTROLLE "KONTROLLE"
true true false 50 Text 0 0 ,First,#,Database Connections\Connection to
snp.sde.parcs.ch.sde\MAIN_SNP_BOTANY.habitap_snp_vm,KONTROLLE,-1,-1;SNP_ID_ALT "SNP_ID_ALT" true true false 4 Long 0
10 ,First,#,Database Connections\Connection to snp.sde.parcs.ch.sde\MAIN_SNP_BOTANY.habitap_snp_vm,SNP_ID_ALT,-1,-1;VM_ID_ALT
"VM_ID_ALT" true true false 4 Long 0 10 ,First,#,Database Connections\Connection to
snp.sde.parcs.ch.sde\MAIN_SNP_BOTANY.habitap_snp_vm,VM_ID_ALT,-1,-1;DC_SOIL "DG Erdboden" true true false 4 Long 0
10 ,First,#,Database Connections\Connection to snp.sde.parcs.ch.sde\MAIN_SNP_BOTANY.habitap_snp_vm,DC_SOIL,-1,-1;DC_HERBS "DG Gras,
Krautschicht" true true false 4 Long 0 10 ,First,#,Database Connections\Connection to
snp.sde.parcs.ch.sde\MAIN_SNP_BOTANY.habitap_snp_vm,DC_HERBS,-1,-1;DC_DWARF "DG Zwergsträucher" true true false 4 Long 0
10 ,First,#,Database Connections\Connection to snp.sde.parcs.ch.sde\MAIN_SNP_BOTANY.habitap_snp_vm,DC_DWARF,-1,-1;SP_HERBS "Dom_Art
Gras-, Kraut-, Zwergsträucher" true true false 6 Text 0 0 ,First,#,Database Connections\Connection to
snp.sde.parcs.ch.sde\MAIN_SNP_BOTANY.habitap_snp_vm,SP_HERBS,-1,-1;L_200 "Eiche" true true false 4 Long 0 10 ,First,#,Database
Connections\Connection to snp.sde.parcs.ch.sde\MAIN_SNP_BOTANY.habitap_snp_vm,L_200,-1,-1;L_620 "Grauerle" true true false 4 Long 0
10 ,First,#,Database Connections\Connection to snp.sde.parcs.ch.sde\MAIN_SNP_BOTANY.habitap_snp_vm,L_620,-1,-1;L_630 "Grünerle" true
true false 4 Long 0 10 ,First,#,Database Connections\Connection to snp.sde.parcs.ch.sde\MAIN_SNP_BOTANY.habitap_snp_vm,L_630,-1,-
1;DW_U "Totholzanteil stehend" true true false 4 Long 0 10 ,First,#,Database Connections\Connection to
snp.sde.parcs.ch.sde\MAIN_SNP_BOTANY.habitap_snp_vm,DW_U,-1,-1;DW_L "Totholzanteil liegend" true true false 4 Long 0
10 ,First,#,Database Connections\Connection to snp.sde.parcs.ch.sde\MAIN_SNP_BOTANY.habitap_snp_vm,DW_L,-1,-1;CDREMARK "Change:
Bemerkung" true true false 200 Text 0 0 ,First,#,Database Connections\Connection to
snp.sde.parcs.ch.sde\MAIN_SNP_BOTANY.habitap_snp_vm,CDREMARK,-1,-1;A_DQ "Qualität" true true false 4 Long 0 10 ,First,#,Database
Connections\Connection to snp.sde.parcs.ch.sde\MAIN_SNP_BOTANY.habitap_snp_vm,A_DQ,-1,-1;A_STATUS "Status Bearbeitung" true true
false 4 Long 0 10 ,First,#,Database Connections\Connection to snp.sde.parcs.ch.sde\MAIN_SNP_BOTANY.habitap_snp_vm,A_STATUS,-1,-
1;BEMERKUNGEN "BEMERKUNGEN" true true false 50 Text 0 0 ,First,#,Database Connections\Connection to
snp.sde.parcs.ch.sde\MAIN_SNP_BOTANY.habitap_snp_vm,BEMERKUNGEN,-1,-1;DOMAIN_TEST "domain test" true true false 4 Long 0
10 ,First,#,Database Connections\Connection to snp.sde.parcs.ch.sde\MAIN_SNP_BOTANY.habitap_snp_vm,DOMAIN_TEST,-1,-1;TEST_DOM_2
"test_dom_2" true true false 4 Long 0 10 ,First,#,Database Connections\Connection to
snp.sde.parcs.ch.sde\MAIN_SNP_BOTANY.habitap_snp_vm,TEST_DOM_2,-1,-1;DOMAIN_TEST_1 "Domain_Test_1" true true false 4 Long 0
10 ,First,#,Database Connections\Connection to snp.sde.parcs.ch.sde\MAIN_SNP_BOTANY.habitap_snp_vm,DOMAIN_TEST_1,-1,-1;SHAPE_AREA
"SHAPE_AREA" false false true 0 Double 0 0 ,First,#,Database Connections\Connection to
snp.sde.parcs.ch.sde\MAIN_SNP_BOTANY.habitap_snp_vm,SHAPE_AREA,-1,-1;SHAPE_LEN "SHAPE_LEN" false false true 0 Double 0
0 ,First,#,Database Connections\Connection to snp.sde.parcs.ch.sde\MAIN_SNP_BOTANY.habitap_snp_vm,SHAPE_LEN,-1,-1" #
INCLUDE IN LINEAGE WHEN EXPORTING METADATA No

```

## PROCESS

```

PROCESS NAME
DATE 2014-04-23 16:10:54
TOOL LOCATION C:\Programme\ArcGIS\Desktop10.0\ArcToolbox\Toolboxes\Data Management Tools.tbx\ChangePrivileges
COMMAND ISSUED
ChangePrivileges 'Database Connections\Connection to sde.parcs.ch.sde\SNP_NALA.habitap_snp_vm' read_bvm GRANT #
INCLUDE IN LINEAGE WHEN EXPORTING METADATA No

```

## PROCESS

```

PROCESS NAME
DATE 2014-04-23 16:11:48
TOOL LOCATION C:\Programme\ArcGIS\Desktop10.0\ArcToolbox\Toolboxes\Data Management Tools.tbx\ChangePrivileges
COMMAND ISSUED
ChangePrivileges 'Database Connections\Connection to sde.parcs.ch.sde\SNP_NALA.habitap_snp_vm' read_snp GRANT #
INCLUDE IN LINEAGE WHEN EXPORTING METADATA No

```

Hide Geoprocessing history ▲

## Distribution ►

## DISTRIBUTOR ►

```

AVAILABLE FORMAT
* NAME SDE Feature Class

```

## TRANSFER OPTIONS

```

ONLINE SOURCE
* LOCATION Server=192.168.1.211; Service=5153; Database=snp; User=main_snp_botany; Version=SDE.DEFAULT
* ACCESS PROTOCOL ArcSDE Connection
* DESCRIPTION Downloadable Data

```

Hide Distributor ▲

## DISTRIBUTION FORMAT

```

* NAME SDE Feature Class

```

Hide Distribution ▲

## Fields ►

## DETAILS FOR OBJECT SNP\_NALA.habitap\_snp\_vm ►

```

* TYPE Feature Class
* ROW COUNT 67146

```

## FIELD OBJECTID ►

```

* ALIAS OBJECTID
* DATA TYPE OID
* WIDTH 4
* PRECISION 10
* SCALE 0
* FIELD DESCRIPTION
Internal feature number.

* DESCRIPTION SOURCE
ESRI

```

\* DESCRIPTION OF VALUES Sequential unique whole numbers that are automatically generated.

[Hide Field OBJECTID ▲](#)

FIELD DI\_Type ▶

\* ALIAS DI\_Type  
 \* DATA TYPE Integer  
 \* WIDTH 4  
 \* PRECISION 10  
 \* SCALE 0  
 FIELD DESCRIPTION  
 DI\_Type

[Hide Field DI\\_Type ▲](#)

FIELD DI\_DT\_U ▶

\* ALIAS Stehendes Totholz  
 \* DATA TYPE Integer  
 \* WIDTH 4  
 \* PRECISION 10  
 \* SCALE 0  
 FIELD DESCRIPTION  
 Stehendes Totholz

SUBTYPE INFORMATION

\* SUBTYPE NAME (SUBTYPE CODE)

Rohböden, Extremstandorte (5000)	0
Feldgehölze (6000)	-2
Wald (7000)	-2
Ver-/Entsorgung (8000)	0
Siedlung, Verkehr (9000)	-2
Gewässer (2000)	0
Moore (3000)	-2
Landwirtschaft (4000)	-2
Rasen, Staudenfluren (4200)	-2

\* DOMAIN NAME dTotholz\_1  
 \* DESCRIPTION Totholzmenge  
 \* TYPE Coded Value  
 \* MERGE RULE Default value  
 \* SPLIT RULE Default value

[Hide Field DI\\_DT\\_U ▲](#)

FIELD DI\_DT\_D ▶

\* ALIAS Liegendes Totholz  
 \* DATA TYPE Integer  
 \* WIDTH 4  
 \* PRECISION 10  
 \* SCALE 0  
 FIELD DESCRIPTION  
 Liegendes Totholz

SUBTYPE INFORMATION

\* SUBTYPE NAME (SUBTYPE CODE)

Rohböden, Extremstandorte (5000)	0
Feldgehölze (6000)	-2
Wald (7000)	-2
Ver-/Entsorgung (8000)	0
Siedlung, Verkehr (9000)	-2
Gewässer (2000)	0
Moore (3000)	-2
Landwirtschaft (4000)	-2
Rasen, Staudenfluren (4200)	-2

\* DOMAIN NAME dTotholz\_1  
 \* DESCRIPTION Totholzmenge  
 \* TYPE Coded Value  
 \* MERGE RULE Default value  
 \* SPLIT RULE Default value

[Hide Field DI\\_DT\\_D ▲](#)

FIELD Shape ▶

\* ALIAS SHAPE  
 \* DATA TYPE Geometry  
 \* WIDTH 4  
 \* PRECISION 0  
 \* SCALE 0  
 \* FIELD DESCRIPTION  
 Feature geometry.

\* DESCRIPTION SOURCE

## ESRI

\* DESCRIPTION OF VALUES Coordinates defining the features.

[Hide Field Shape ▲](#)

## FIELD DC\_WATER ▶

\* ALIAS Habitat-CLASS

\* DATA TYPE Integer

\* WIDTH 4

\* PRECISION 10

\* SCALE 0

FIELD DESCRIPTION  
Habitat-CLASS

## SUBTYPE INFORMATION

\* SUBTYPE NAME (SUBTYPE CODE)

Rohböden, Extremstandorte (5000)	0
Feldgehölze (6000)	0
Wald (7000)	0
Ver-/Entsorgung (8000)	0
Siedlung, Verkehr (9000)	0
Gewässer (2000)	0
Moore (3000)	0
Landwirtschaft (4000)	0
Rasen, Staudenfluren (4200)	0

\* DOMAIN NAME dDC\_1  
\* DESCRIPTION  
\* TYPE Coded Value  
\* MERGE RULE Default value  
\* SPLIT RULE Duplicate

[Hide Field DC\\_WATER ▲](#)

## FIELD HC ▶

\* ALIAS Habitat-TYPE

\* DATA TYPE Integer

\* WIDTH 4

\* PRECISION 10

\* SCALE 0

FIELD DESCRIPTION  
Habitat-TYPE

## SUBTYPE INFORMATION

\* SUBTYPE NAME (SUBTYPE CODE)

Rohböden, Extremstandorte (5000)	9000
Feldgehölze (6000)	9000
Wald (7000)	9000
Ver-/Entsorgung (8000)	9000
Siedlung, Verkehr (9000)	9000
Gewässer (2000)	9000
Moore (3000)	9000
Landwirtschaft (4000)	9000
Rasen, Staudenfluren (4200)	9000

\* DOMAIN NAME dHabitatClass\_1  
\* DESCRIPTION  
\* TYPE Coded Value  
\* MERGE RULE Default value  
\* SPLIT RULE Duplicate

[Hide Field HC ▲](#)

## FIELD HT ▶

\* ALIAS Water

\* DATA TYPE Integer

\* WIDTH 4

\* PRECISION 10

\* SCALE 0

FIELD DESCRIPTION  
Water

## SUBTYPE INFORMATION

\* SUBTYPE NAME (SUBTYPE CODE)

Rohböden, Extremstandorte (5000)	9000
Feldgehölze (6000)	9000
Wald (7000)	9000
Ver-/Entsorgung (8000)	9000

Siedlung, Verkehr (9000)	9000
Gewässer (2000)	9000
Moore (3000)	9000
Landwirtschaft (4000)	9000
Rasen, Staudenfluren (4200)	9000

\* DOMAIN NAME HT  
 \* DESCRIPTION Desc  
 \* TYPE Coded Value  
 \* MERGE RULE Default value  
 \* SPLIT RULE Default value

[Hide Field HT ▲](#)

FIELD DC\_Water ►  
 \* ALIAS Add. Charact. 1  
 \* DATA TYPE String  
 \* WIDTH 7  
 \* PRECISION 0  
 \* SCALE 0  
 FIELD DESCRIPTION  
 Add. Charact. 1

[Hide Field DC\\_Water ▲](#)

FIELD DC\_Rock ►  
 \* ALIAS Laubholz  
 \* DATA TYPE Integer  
 \* WIDTH 4  
 \* PRECISION 10  
 \* SCALE 0  
 FIELD DESCRIPTION  
 Laubholz

[Hide Field DC\\_Rock ▲](#)

FIELD DC\_Scree ►  
 \* ALIAS Buche  
 \* DATA TYPE Integer  
 \* WIDTH 4  
 \* PRECISION 10  
 \* SCALE 0  
 FIELD DESCRIPTION  
 Buche

[Hide Field DC\\_Scree ▲](#)

FIELD DC\_Shrebs ►  
 \* ALIAS Ahorn, Linde, Ulme  
 \* DATA TYPE Integer  
 \* WIDTH 4  
 \* PRECISION 10  
 \* SCALE 0  
 FIELD DESCRIPTION  
 Ahorn, Linde, Ulme

[Hide Field DC\\_Shrebs ▲](#)

FIELD DC\_Trees ►  
 \* ALIAS Birke  
 \* DATA TYPE Integer  
 \* WIDTH 4  
 \* PRECISION 10  
 \* SCALE 0  
 FIELD DESCRIPTION  
 Birke

[Hide Field DC\\_Trees ▲](#)

FIELD DC\_Sealed ►  
 \* ALIAS Erle  
 \* DATA TYPE Integer  
 \* WIDTH 4  
 \* PRECISION 10  
 \* SCALE 0  
 FIELD DESCRIPTION  
 Erle

[Hide Field DC\\_Sealed ▲](#)

FIELD AC1 ►  
 \* ALIAS Weide, Pappel  
 \* DATA TYPE Integer  
 \* WIDTH 4  
 \* PRECISION 10  
 \* SCALE 0  
 FIELD DESCRIPTION  
 Weide, Pappel

SUBTYPE INFORMATION

\* SUBTYPE NAME (SUBTYPE CODE)

Rohböden, Extremstandorte (5000)	0
----------------------------------	---

Feldgehölze (6000)	0
Wald (7000)	0
Ver-/Entsorgung (8000)	0
Siedlung, Verkehr (9000)	0
Gewässer (2000)	0
Moore (3000)	0
Landwirtschaft (4000)	0
Rasen, Staudenfluren (4200)	0

\* DOMAIN NAME dAC\_4000\_O\_1  
 \* DESCRIPTION  
 \* TYPE Coded Value  
 \* MERGE RULE Default value  
 \* SPLIT RULE Duplicate

[Hide Field AC1 ▲](#)

FIELD L\_000 ▶

\* ALIAS Div. Laubholz  
 \* DATA TYPE Integer  
 \* WIDTH 4  
 \* PRECISION 10  
 \* SCALE 0

FIELD DESCRIPTION  
 Div. Laubholz

SUBTYPE INFORMATION

\* SUBTYPE NAME (SUBTYPE CODE)

Rohböden, Extremstandorte (5000)	-2
Feldgehölze (6000)	-2
Wald (7000)	0
Ver-/Entsorgung (8000)	-2
Siedlung, Verkehr (9000)	-2
Gewässer (2000)	-2
Moore (3000)	-2
Landwirtschaft (4000)	-2
Rasen, Staudenfluren (4200)	-2

\* DOMAIN NAME dNotDefined\_I\_1  
 \* DESCRIPTION  
 \* TYPE Coded Value  
 \* MERGE RULE Default value  
 \* SPLIT RULE Duplicate

[Hide Field L\\_000 ▲](#)

FIELD L\_100 ▶

\* ALIAS Nadelholz  
 \* DATA TYPE Integer  
 \* WIDTH 4  
 \* PRECISION 10  
 \* SCALE 0

FIELD DESCRIPTION  
 Nadelholz

SUBTYPE INFORMATION

\* SUBTYPE NAME (SUBTYPE CODE)

Rohböden, Extremstandorte (5000)	-2
Feldgehölze (6000)	-2
Wald (7000)	0
Ver-/Entsorgung (8000)	-2
Siedlung, Verkehr (9000)	-2
Gewässer (2000)	-2
Moore (3000)	-2
Landwirtschaft (4000)	-2
Rasen, Staudenfluren (4200)	-2

\* DOMAIN NAME dNotDefined\_I\_1  
 \* DESCRIPTION  
 \* TYPE Coded Value  
 \* MERGE RULE Default value  
 \* SPLIT RULE Duplicate

[Hide Field L\\_100 ▲](#)

FIELD L\_400 ▶

\* ALIAS Fichte  
 \* DATA TYPE Integer  
 \* WIDTH 4  
 \* PRECISION 10  
 \* SCALE 0

FIELD DESCRIPTION  
 Fichte

SUBTYPE INFORMATION

\* SUBTYPE NAME (SUBTYPE CODE)

Rohböden, Extremstandorte (5000)	-2
Feldgehölze (6000)	-2
Wald (7000)	0
Ver-/Entsorgung (8000)	-2
Siedlung, Verkehr (9000)	-2
Gewässer (2000)	-2
Moore (3000)	-2
Landwirtschaft (4000)	-2
Rasen, Staudenfluren (4200)	-2

\* DOMAIN NAME dNotDefined\_I\_1  
 \* DESCRIPTION  
 \* TYPE Coded Value  
 \* MERGE RULE Default value  
 \* SPLIT RULE Duplicate

[Hide Field L\\_400 ▲](#)

FIELD L\_500 ▶

\* ALIAS Waldföhre  
 \* DATA TYPE Integer  
 \* WIDTH 4  
 \* PRECISION 10  
 \* SCALE 0

FIELD DESCRIPTION  
 Waldföhre

SUBTYPE INFORMATION

\* SUBTYPE NAME (SUBTYPE CODE)

Rohböden, Extremstandorte (5000)	-2
Feldgehölze (6000)	-2
Wald (7000)	0
Ver-/Entsorgung (8000)	-2
Siedlung, Verkehr (9000)	-2
Gewässer (2000)	-2
Moore (3000)	-2
Landwirtschaft (4000)	-2
Rasen, Staudenfluren (4200)	-2

\* DOMAIN NAME dNotDefined\_I\_1  
 \* DESCRIPTION  
 \* TYPE Coded Value  
 \* MERGE RULE Default value  
 \* SPLIT RULE Duplicate

[Hide Field L\\_500 ▲](#)

FIELD L\_600 ▶

\* ALIAS Rock  
 \* DATA TYPE Integer  
 \* WIDTH 4  
 \* PRECISION 10  
 \* SCALE 0

FIELD DESCRIPTION  
 Rock

SUBTYPE INFORMATION

\* SUBTYPE NAME (SUBTYPE CODE)

Rohböden, Extremstandorte (5000)	-2
Feldgehölze (6000)	-2
Wald (7000)	0
Ver-/Entsorgung (8000)	-2
Siedlung, Verkehr (9000)	-2
Gewässer (2000)	-2
Moore (3000)	-2
Landwirtschaft (4000)	-2

Rasen, Staudenfluren (4200) -2

\* DOMAIN NAME dNotDefined\_I\_1  
 \* DESCRIPTION  
 \* TYPE Coded Value  
 \* MERGE RULE Default value  
 \* SPLIT RULE Duplicate

[Hide Field L\\_600 ▲](#)

FIELD L\_700 ▶

\* ALIAS Scree  
 \* DATA TYPE Integer  
 \* WIDTH 4  
 \* PRECISION 10  
 \* SCALE 0

FIELD DESCRIPTION  
 Scree

SUBTYPE INFORMATION

\* SUBTYPE NAME (SUBTYPE CODE)

Rohböden, Extremstandorte (5000)	-2
Feldgehölze (6000)	-2
Wald (7000)	0
Ver-/Entsorgung (8000)	-2
Siedlung, Verkehr (9000)	-2
Gewässer (2000)	-2
Moore (3000)	-2
Landwirtschaft (4000)	-2
Rasen, Staudenfluren (4200)	-2

\* DOMAIN NAME dNotDefined\_I\_1  
 \* DESCRIPTION  
 \* TYPE Coded Value  
 \* MERGE RULE Default value  
 \* SPLIT RULE Duplicate

[Hide Field L\\_700 ▲](#)

FIELD L\_001 ▶

\* ALIAS Arve/Zirbe  
 \* DATA TYPE Integer  
 \* WIDTH 4  
 \* PRECISION 10  
 \* SCALE 0

FIELD DESCRIPTION  
 Arve/Zirbe

SUBTYPE INFORMATION

\* SUBTYPE NAME (SUBTYPE CODE)

Rohböden, Extremstandorte (5000)	-2
Feldgehölze (6000)	-2
Wald (7000)	0
Ver-/Entsorgung (8000)	-2
Siedlung, Verkehr (9000)	-2
Gewässer (2000)	-2
Moore (3000)	-2
Landwirtschaft (4000)	-2
Rasen, Staudenfluren (4200)	-2

\* DOMAIN NAME dNotDefined\_I\_1  
 \* DESCRIPTION  
 \* TYPE Coded Value  
 \* MERGE RULE Default value  
 \* SPLIT RULE Duplicate

[Hide Field L\\_001 ▲](#)

FIELD C\_000 ▶

\* ALIAS Legföhre  
 \* DATA TYPE Integer  
 \* WIDTH 4  
 \* PRECISION 10  
 \* SCALE 0

FIELD DESCRIPTION  
 Legföhre

SUBTYPE INFORMATION

\* SUBTYPE NAME (SUBTYPE CODE)

Rohböden, Extremstandorte (5000)	-2
----------------------------------	----

Feldgehölze (6000)	-2
Wald (7000)	-2
Ver-/Entsorgung (8000)	-2
Siedlung, Verkehr (9000)	-2
Gewässer (2000)	-2
Moore (3000)	-2
Landwirtschaft (4000)	-2
Rasen, Staudenfluren (4200)	-2

\* DOMAIN NAME dNotDefined\_I\_1  
 \* DESCRIPTION  
 \* TYPE Coded Value  
 \* MERGE RULE Default value  
 \* SPLIT RULE Duplicate

[Hide Field C\\_000 ▲](#)

FIELD C\_100 ▶

\* ALIAS Bergföhre (Spirke)  
 \* DATA TYPE Integer  
 \* WIDTH 4  
 \* PRECISION 10  
 \* SCALE 0

FIELD DESCRIPTION  
 Bergföhre (Spirke)

SUBTYPE INFORMATION

\* SUBTYPE NAME (SUBTYPE CODE)

Rohböden, Extremstandorte (5000)	-2
Feldgehölze (6000)	-2
Wald (7000)	0
Ver-/Entsorgung (8000)	-2
Siedlung, Verkehr (9000)	-2
Gewässer (2000)	-2
Moore (3000)	-2
Landwirtschaft (4000)	-2
Rasen, Staudenfluren (4200)	-2

\* DOMAIN NAME dNotDefined\_I\_1  
 \* DESCRIPTION  
 \* TYPE Coded Value  
 \* MERGE RULE Default value  
 \* SPLIT RULE Duplicate

[Hide Field C\\_100 ▲](#)

FIELD C\_310 ▶

\* ALIAS Lärche  
 \* DATA TYPE Integer  
 \* WIDTH 4  
 \* PRECISION 10  
 \* SCALE 0

FIELD DESCRIPTION  
 Lärche

SUBTYPE INFORMATION

\* SUBTYPE NAME (SUBTYPE CODE)

Rohböden, Extremstandorte (5000)	-2
Feldgehölze (6000)	-2
Wald (7000)	0
Ver-/Entsorgung (8000)	-2
Siedlung, Verkehr (9000)	-2
Gewässer (2000)	-2
Moore (3000)	-2
Landwirtschaft (4000)	-2
Rasen, Staudenfluren (4200)	-2

\* DOMAIN NAME dNotDefined\_I\_1  
 \* DESCRIPTION  
 \* TYPE Coded Value  
 \* MERGE RULE Default value  
 \* SPLIT RULE Duplicate

[Hide Field C\\_310 ▲](#)

FIELD DC\_ROCK ▶



\* ALIAS Div. Nadelholz  
 \* DATA TYPE Integer  
 \* WIDTH 4  
 \* PRECISION 10  
 \* SCALE 0

FIELD DESCRIPTION  
 Div. Nadelholz

## SUBTYPE INFORMATION

\* SUBTYPE NAME (SUBTYPE CODE)

Rohböden, Extremstandorte (5000)	0
Feldgehölze (6000)	0
Wald (7000)	0
Ver-/Entsorgung (8000)	0
Siedlung, Verkehr (9000)	0
Gewässer (2000)	0
Moore (3000)	0
Landwirtschaft (4000)	0
Rasen, Staudenfluren (4200)	0

\* DOMAIN NAME dDC\_1  
 \* DESCRIPTION  
 \* TYPE Coded Value  
 \* MERGE RULE Default value  
 \* SPLIT RULE Duplicate

[Hide Field DC\\_ROCK ▲](#)

## FIELD DC\_SCREE ►

\* ALIAS REMARKS  
 \* DATA TYPE String  
 \* WIDTH 200  
 \* PRECISION 0  
 \* SCALE 0

FIELD DESCRIPTION  
 REMARKS

## SUBTYPE INFORMATION

\* SUBTYPE NAME (SUBTYPE CODE)

Rohböden, Extremstandorte (5000)	0
Feldgehölze (6000)	0
Wald (7000)	0
Ver-/Entsorgung (8000)	0
Siedlung, Verkehr (9000)	0
Gewässer (2000)	0
Moore (3000)	0
Landwirtschaft (4000)	0
Rasen, Staudenfluren (4200)	0

\* DOMAIN NAME dDC\_1  
 \* DESCRIPTION  
 \* TYPE Coded Value  
 \* MERGE RULE Default value  
 \* SPLIT RULE Duplicate

[Hide Field DC\\_SCREE ▲](#)

## FIELD C\_330 ►

\* ALIAS FIELD\_VERIFICATION\_DATE  
 \* DATA TYPE Date  
 \* WIDTH 36  
 \* PRECISION 0  
 \* SCALE 0

FIELD DESCRIPTION  
 FIELD\_VERIFICATION\_DATE

## SUBTYPE INFORMATION

\* SUBTYPE NAME (SUBTYPE CODE)

Rohböden, Extremstandorte (5000)	-2
Feldgehölze (6000)	-2
Wald (7000)	0
Ver-/Entsorgung (8000)	-2
Siedlung, Verkehr (9000)	-2
Gewässer (2000)	-2
Moore (3000)	-2
Landwirtschaft (4000)	-2

Rasen, Staudenfluren (4200) -2

\* DOMAIN NAME dNotDefined\_I\_1  
 \* DESCRIPTION  
 \* TYPE Coded Value  
 \* MERGE RULE Default value  
 \* SPLIT RULE Duplicate

[Hide Field C\\_330 ▲](#)

FIELD C\_341 ▶

\* ALIAS FOTO  
 \* DATA TYPE String  
 \* WIDTH 50  
 \* PRECISION 0  
 \* SCALE 0  
 FIELD DESCRIPTION  
 FOTO

SUBTYPE INFORMATION

\* SUBTYPE NAME (SUBTYPE CODE)

Rohböden, Extremstandorte (5000)	-2
Feldgehölze (6000)	-2
Wald (7000)	0
Ver-/Entsorgung (8000)	-2
Siedlung, Verkehr (9000)	-2
Gewässer (2000)	-2
Moore (3000)	-2
Landwirtschaft (4000)	-2
Rasen, Staudenfluren (4200)	-2

\* DOMAIN NAME dNotDefined\_I\_1  
 \* DESCRIPTION  
 \* TYPE Coded Value  
 \* MERGE RULE Default value  
 \* SPLIT RULE Duplicate

[Hide Field C\\_341 ▲](#)

FIELD C\_342 ▶

\* ALIAS Grass, Herbs  
 \* DATA TYPE Integer  
 \* WIDTH 4  
 \* PRECISION 10  
 \* SCALE 0  
 FIELD DESCRIPTION  
 Grass, Herbs

SUBTYPE INFORMATION

\* SUBTYPE NAME (SUBTYPE CODE)

Rohböden, Extremstandorte (5000)	-2
Feldgehölze (6000)	-2
Wald (7000)	0
Ver-/Entsorgung (8000)	-2
Siedlung, Verkehr (9000)	-2
Gewässer (2000)	-2
Moore (3000)	-2
Landwirtschaft (4000)	-2
Rasen, Staudenfluren (4200)	-2

\* DOMAIN NAME dNotDefined\_I\_1  
 \* DESCRIPTION  
 \* TYPE Coded Value  
 \* MERGE RULE Default value  
 \* SPLIT RULE Duplicate

[Hide Field C\\_342 ▲](#)

FIELD C\_700 ▶

\* ALIAS Dwarf, Fern, big Perennial Herbs  
 \* DATA TYPE Integer  
 \* WIDTH 4  
 \* PRECISION 10  
 \* SCALE 0  
 FIELD DESCRIPTION  
 Dwarf, Fern, big Perennial Herbs

SUBTYPE INFORMATION

\* SUBTYPE NAME (SUBTYPE CODE)

Rohböden, Extremstandorte (5000)	-2
----------------------------------	----

Feldgehölze (6000)	-2
Wald (7000)	0
Ver-/Entsorgung (8000)	-2
Siedlung, Verkehr (9000)	-2
Gewässer (2000)	-2
Moore (3000)	-2
Landwirtschaft (4000)	-2
Rasen, Staudenfluren (4200)	-2

\* DOMAIN NAME dNotDefined\_I\_1  
 \* DESCRIPTION  
 \* TYPE Coded Value  
 \* MERGE RULE Default value  
 \* SPLIT RULE Duplicate

[Hide Field C\\_700 ▲](#)

FIELD C\_001 ▶

\* ALIAS Shrubs  
 \* DATA TYPE Integer  
 \* WIDTH 4  
 \* PRECISION 10  
 \* SCALE 0

FIELD DESCRIPTION  
 Shrubs

SUBTYPE INFORMATION

\* SUBTYPE NAME (SUBTYPE CODE)

Rohböden, Extremstandorte (5000)	-2
Feldgehölze (6000)	-2
Wald (7000)	-2
Ver-/Entsorgung (8000)	-2
Siedlung, Verkehr (9000)	-2
Gewässer (2000)	-2
Moore (3000)	-2
Landwirtschaft (4000)	-2
Rasen, Staudenfluren (4200)	-2

\* DOMAIN NAME dNotDefined\_I\_1  
 \* DESCRIPTION  
 \* TYPE Coded Value  
 \* MERGE RULE Default value  
 \* SPLIT RULE Duplicate

[Hide Field C\\_001 ▲](#)

FIELD Remarks ▶

\* ALIAS Trees  
 \* DATA TYPE Integer  
 \* WIDTH 4  
 \* PRECISION 10  
 \* SCALE 0

FIELD DESCRIPTION  
 Trees

[Hide Field Remarks ▲](#)

FIELD Field\_Verification\_Date ▶

\* ALIAS Sealed Area  
 \* DATA TYPE Integer  
 \* WIDTH 4  
 \* PRECISION 10  
 \* SCALE 0

FIELD DESCRIPTION  
 Sealed Area

[Hide Field Field\\_Verification\\_Date ▲](#)

FIELD Foto ▶

\* ALIAS Building Coverage  
 \* DATA TYPE Integer  
 \* WIDTH 4  
 \* PRECISION 10  
 \* SCALE 0

FIELD DESCRIPTION  
 Building Coverage

[Hide Field Foto ▲](#)

FIELD DC\_GH ▶

\* ALIAS Add. Charact. 2  
 \* DATA TYPE String  
 \* WIDTH 7  
 \* PRECISION 0

\* SCALE 0  
FIELD DESCRIPTION  
Add. Charact. 2

## SUBTYPE INFORMATION

\* SUBTYPE NAME (SUBTYPE CODE)

Rohböden, Extremstandorte (5000)	0
Feldgehölze (6000)	0
Wald (7000)	0
Ver-/Entsorgung (8000)	0
Siedlung, Verkehr (9000)	0
Gewässer (2000)	0
Moore (3000)	0
Landwirtschaft (4000)	0
Rasen, Staudenfluren (4200)	0

\* DOMAIN NAME dDC\_1  
\* DESCRIPTION  
\* TYPE Coded Value  
\* MERGE RULE Default value  
\* SPLIT RULE Duplicate

Hide Field DC\_GH ▲

## FIELD DC\_DS ▶

\* ALIAS Grauerle  
\* DATA TYPE Integer  
\* WIDTH 4  
\* PRECISION 10  
\* SCALE 0

FIELD DESCRIPTION  
Add. Charact. 3

## SUBTYPE INFORMATION

\* SUBTYPE NAME (SUBTYPE CODE)

Rohböden, Extremstandorte (5000)	0
Feldgehölze (6000)	0
Wald (7000)	0
Ver-/Entsorgung (8000)	0
Siedlung, Verkehr (9000)	-2
Gewässer (2000)	0
Moore (3000)	0
Landwirtschaft (4000)	0
Rasen, Staudenfluren (4200)	0

\* DOMAIN NAME dDC\_1  
\* DESCRIPTION  
\* TYPE Coded Value  
\* MERGE RULE Default value  
\* SPLIT RULE Duplicate

Hide Field DC\_DS ▲

## FIELD DC\_SHRUBS ▶

\* ALIAS Grünerle  
\* DATA TYPE Integer  
\* WIDTH 4  
\* PRECISION 10  
\* SCALE 0

FIELD DESCRIPTION  
Grass, Herbs, ...

## SUBTYPE INFORMATION

\* SUBTYPE NAME (SUBTYPE CODE)

Rohböden, Extremstandorte (5000)	0
Feldgehölze (6000)	0
Wald (7000)	0
Ver-/Entsorgung (8000)	0
Siedlung, Verkehr (9000)	0
Gewässer (2000)	0
Moore (3000)	0
Landwirtschaft (4000)	0
Rasen, Staudenfluren (4200)	0

\* DOMAIN NAME dDC\_1

- \* DESCRIPTION
- \* TYPE Coded Value
- \* MERGE RULE Default value
- \* SPLIT RULE Duplicate

[Hide Field DC\\_SHRUBS ▲](#)

FIELD DC\_TREES ▶

- \* ALIAS domain\_test
- \* DATA TYPE Integer
- \* WIDTH 4
- \* PRECISION 10
- \* SCALE 0

FIELD DESCRIPTION  
Shrubs

SUBTYPE INFORMATION

\* SUBTYPE NAME (SUBTYPE CODE)

Rohböden, Extremstandorte (5000)	0
Feldgehölze (6000)	0
Wald (7000)	0
Ver-/Entsorgung (8000)	0
Siedlung, Verkehr (9000)	0
Gewässer (2000)	0
Moore (3000)	0
Landwirtschaft (4000)	0
Rasen, Staudenfluren (4200)	0

- \* DOMAIN NAME dDC\_1
- \* DESCRIPTION
- \* TYPE Coded Value
- \* MERGE RULE Default value
- \* SPLIT RULE Duplicate

[Hide Field DC\\_TREES ▲](#)

FIELD DC\_SEALED ▶

- \* ALIAS test\_dom\_2
- \* DATA TYPE Integer
- \* WIDTH 4
- \* PRECISION 10
- \* SCALE 0

FIELD DESCRIPTION  
Deciduous

SUBTYPE INFORMATION

\* SUBTYPE NAME (SUBTYPE CODE)

Rohböden, Extremstandorte (5000)	-2
Feldgehölze (6000)	-2
Wald (7000)	-2
Ver-/Entsorgung (8000)	-2
Siedlung, Verkehr (9000)	-2
Gewässer (2000)	-2
Moore (3000)	-2
Landwirtschaft (4000)	0
Rasen, Staudenfluren (4200)	-2

- \* DOMAIN NAME dNotDefined\_I\_1
- \* DESCRIPTION
- \* TYPE Coded Value
- \* MERGE RULE Default value
- \* SPLIT RULE Duplicate

[Hide Field DC\\_SEALED ▲](#)

FIELD DC\_BUILDNG ▶

- \* ALIAS SHAPE.AREA
- \* DATA TYPE Double
- \* WIDTH 0
- \* PRECISION 0
- \* SCALE 0

FIELD DESCRIPTION  
Coniferous

SUBTYPE INFORMATION

\* SUBTYPE NAME (SUBTYPE CODE)

Rohböden, Extremstandorte (5000)	-2
Feldgehölze (6000)	-2
Wald (7000)	-2

Ver-/Entsorgung (8000)	-2
Siedlung, Verkehr (9000)	-2
Gewässer (2000)	-2
Moore (3000)	-2
Landwirtschaft (4000)	0
Rasen, Staudenfluren (4200)	-2

\* DOMAIN NAME dNotDefined\_I\_1  
 \* DESCRIPTION  
 \* TYPE Coded Value  
 \* MERGE RULE Default value  
 \* SPLIT RULE Duplicate

Hide Field DC\_BUILDING ▲

FIELD AC2 ▶

\* ALIAS SHAPE.LEN  
 \* DATA TYPE Double  
 \* WIDTH 0  
 \* PRECISION 0  
 \* SCALE 0

FIELD DESCRIPTION  
 DI\_REMARK

\* DESCRIPTION SOURCE  
 ESRI

SUBTYPE INFORMATION

\* SUBTYPE NAME (SUBTYPE CODE)

Rohböden, Extremstandorte (5000)	0
Feldgehölze (6000)	0
Wald (7000)	0
Ver-/Entsorgung (8000)	0
Siedlung, Verkehr (9000)	0
Gewässer (2000)	0
Moore (3000)	0
Landwirtschaft (4000)	0
Rasen, Staudenfluren (4200)	0

\* DOMAIN NAME dAC\_4000\_O\_1  
 \* DESCRIPTION  
 \* TYPE Coded Value  
 \* MERGE RULE Default value  
 \* SPLIT RULE Duplicate

\* DESCRIPTION OF VALUES Positive real numbers that are automatically generated.

Hide Field AC2 ▲

FIELD SP\_TREES\_D ▶

\* ALIAS KONTROLLE  
 \* DATA TYPE String  
 \* WIDTH 50  
 \* PRECISION 0  
 \* SCALE 0

FIELD DESCRIPTION  
 Deciduous

SUBTYPE INFORMATION

\* SUBTYPE NAME (SUBTYPE CODE)

Rohböden, Extremstandorte (5000)	0
Feldgehölze (6000)	0
Wald (7000)	-2
Ver-/Entsorgung (8000)	0
Siedlung, Verkehr (9000)	0
Gewässer (2000)	0
Moore (3000)	0
Landwirtschaft (4000)	-2
Rasen, Staudenfluren (4200)	0

\* DOMAIN NAME dS\_Deciduous\_1  
 \* DESCRIPTION  
 \* TYPE Coded Value  
 \* MERGE RULE Default value  
 \* SPLIT RULE Duplicate

Hide Field SP\_TREES\_D ▲

## FIELD SP\_TREES\_C ▶

\* ALIAS SNP\_ID\_ALT  
 \* DATA TYPE Integer  
 \* WIDTH 4  
 \* PRECISION 10  
 \* SCALE 0

FIELD DESCRIPTION  
 Coniferous

\* DESCRIPTION SOURCE  
 ESRI

## SUBTYPE INFORMATION

\* SUBTYPE NAME (SUBTYPE CODE)

Rohböden, Extremstandorte (5000)	0
Feldgehölze (6000)	0
Wald (7000)	-2
Ver-/Entsorgung (8000)	0
Siedlung, Verkehr (9000)	0
Gewässer (2000)	0
Moore (3000)	0
Landwirtschaft (4000)	-2
Rasen, Staudenfluren (4200)	0

\* DOMAIN NAME dS\_Conifers\_1

\* DESCRIPTION  
 \* TYPE Coded Value  
 \* MERGE RULE Default value  
 \* SPLIT RULE Duplicate

\* DESCRIPTION OF VALUES Positive real numbers that are automatically generated.

[Hide Field SP\\_TREES\\_C ▲](#)

## FIELD DI\_Remark ▶

\* ALIAS VM\_ID\_ALT  
 \* DATA TYPE Integer  
 \* WIDTH 4  
 \* PRECISION 10  
 \* SCALE 0

FIELD DESCRIPTION  
 DI\_Remark

\* DESCRIPTION SOURCE  
 ESRI

\* DESCRIPTION OF VALUES Positive real numbers that are automatically generated.

[Hide Field DI\\_Remark ▲](#)

## FIELD DQ ▶

\* ALIAS DG Erdboden  
 \* DATA TYPE Integer  
 \* WIDTH 4  
 \* PRECISION 10  
 \* SCALE 0

FIELD DESCRIPTION  
 Data Quality

## SUBTYPE INFORMATION

\* SUBTYPE NAME (SUBTYPE CODE)

Rohböden, Extremstandorte (5000)	0
Feldgehölze (6000)	0
Wald (7000)	0
Ver-/Entsorgung (8000)	0
Siedlung, Verkehr (9000)	0
Gewässer (2000)	0
Moore (3000)	0
Landwirtschaft (4000)	0
Rasen, Staudenfluren (4200)	0

\* DOMAIN NAME dQM\_1

\* DESCRIPTION  
 \* TYPE Coded Value  
 \* MERGE RULE Default value  
 \* SPLIT RULE Default value

[Hide Field DQ ▲](#)

## FIELD SP\_Herbs ▶

\* ALIAS DG Gras, Krautschicht  
 \* DATA TYPE Integer  
 \* WIDTH 4  
 \* PRECISION 10

\* SCALE 0

[Hide Field SP\\_Herbs ▲](#)

## FIELD L\_200 ▶

\* ALIAS DG Zwergsträucher  
 \* DATA TYPE Integer  
 \* WIDTH 4  
 \* PRECISION 10  
 \* SCALE 0

## SUBTYPE INFORMATION

## \* SUBTYPE NAME (SUBTYPE CODE)

Rohböden, Extremstandorte (5000)	no default value
Feldgehölze (6000)	no default value
Wald (7000)	no default value
Ver-/Entsorgung (8000)	no default value
Siedlung, Verkehr (9000)	no default value
Gewässer (2000)	no default value
Moore (3000)	no default value
Landwirtschaft (4000)	no default value
Rasen, Staudenfluren (4200)	no default value

\* DOMAIN NAME dNotDefined\_I\_1  
 \* DESCRIPTION  
 \* TYPE Coded Value  
 \* MERGE RULE Default value  
 \* SPLIT RULE Duplicate

[Hide Field L\\_200 ▲](#)

## FIELD L\_620 ▶

\* ALIAS Domain\_Test\_1  
 \* DATA TYPE Integer  
 \* WIDTH 4  
 \* PRECISION 10  
 \* SCALE 0

## SUBTYPE INFORMATION

## \* SUBTYPE NAME (SUBTYPE CODE)

Rohböden, Extremstandorte (5000)	no default value
Feldgehölze (6000)	no default value
Wald (7000)	no default value
Ver-/Entsorgung (8000)	no default value
Siedlung, Verkehr (9000)	no default value
Gewässer (2000)	no default value
Moore (3000)	no default value
Landwirtschaft (4000)	no default value
Rasen, Staudenfluren (4200)	no default value

\* DOMAIN NAME dNotDefined\_I\_1  
 \* DESCRIPTION  
 \* TYPE Coded Value  
 \* MERGE RULE Default value  
 \* SPLIT RULE Duplicate

[Hide Field L\\_620 ▲](#)

## FIELD L\_630 ▶

\* ALIAS Totholzanteil stehend  
 \* DATA TYPE Integer  
 \* WIDTH 4  
 \* PRECISION 10  
 \* SCALE 0

## SUBTYPE INFORMATION

## \* SUBTYPE NAME (SUBTYPE CODE)

Rohböden, Extremstandorte (5000)	0
Feldgehölze (6000)	0
Wald (7000)	0
Ver-/Entsorgung (8000)	0
Siedlung, Verkehr (9000)	0
Gewässer (2000)	0
Moore (3000)	0
Landwirtschaft (4000)	0



Rasen, Staudenfluren (4200) 0

- \* DOMAIN NAME dNotDefined\_I\_1
- \* DESCRIPTION
- \* TYPE Coded Value
- \* MERGE RULE Default value
- \* SPLIT RULE Duplicate

[Hide Field L\\_630 ▲](#)

FIELD domain\_test ►

- \* ALIAS Totholzanteil liegend
- \* DATA TYPE Integer
- \* WIDTH 4
- \* PRECISION 10
- \* SCALE 0

[Hide Field domain\\_test ▲](#)

FIELD test\_dom\_2 ►

- \* ALIAS Change: Bemerkung
- \* DATA TYPE String
- \* WIDTH 200
- \* PRECISION 0
- \* SCALE 0

[Hide Field test\\_dom\\_2 ▲](#)

FIELD SHAPE.AREA ►

- \* ALIAS Qualität
- \* DATA TYPE Integer
- \* WIDTH 4
- \* PRECISION 10
- \* SCALE 0

[Hide Field SHAPE.AREA ▲](#)

FIELD SHAPE.LEN ►

- \* ALIAS Status Bearbeitung
- \* DATA TYPE Integer
- \* WIDTH 4
- \* PRECISION 10
- \* SCALE 0

[Hide Field SHAPE.LEN ▲](#)

FIELD Domain\_Test\_1 ►

- \* ALIAS Add. Charact. 3
- \* DATA TYPE String
- \* WIDTH 7
- \* PRECISION 0
- \* SCALE 0

[Hide Field Domain\\_Test\\_1 ▲](#)

FIELD DW\_U ►

- \* ALIAS BEMERKUNGEN
- \* DATA TYPE String
- \* WIDTH 50
- \* PRECISION 0
- \* SCALE 0
- \* FIELD DESCRIPTION  
Length of feature in internal units.
- \* DESCRIPTION SOURCE  
ESRI

SUBTYPE INFORMATION

\* SUBTYPE NAME (SUBTYPE CODE)

Rohböden, Extremstandorte (5000)	0
Feldgehölze (6000)	0
Wald (7000)	0
Ver-/Entsorgung (8000)	0
Siedlung, Verkehr (9000)	0
Gewässer (2000)	0
Moore (3000)	0
Landwirtschaft (4000)	0
Rasen, Staudenfluren (4200)	0

- \* DOMAIN NAME dDWP
- \* DESCRIPTION Abstufung Totholzanteil
- \* TYPE Coded Value
- \* MERGE RULE Default value
- \* SPLIT RULE Duplicate

\* DESCRIPTION OF VALUES Positive real numbers that are automatically generated.

[Hide Field DW\\_U ▲](#)

## FIELD DW\_L ▶

- \* ALIAS Grass, Herbs, ...
- \* DATA TYPE String
- \* WIDTH 6
- \* PRECISION 0
- \* SCALE 0
- \* FIELD DESCRIPTION  
Area of feature in internal units squared.
- \* DESCRIPTION SOURCE  
ESRI

## SUBTYPE INFORMATION

## \* SUBTYPE NAME (SUBTYPE CODE)

Rohböden, Extremstandorte (5000)	no default value
Feldgehölze (6000)	no default value
Wald (7000)	no default value
Ver-/Entsorgung (8000)	no default value
Siedlung, Verkehr (9000)	no default value
Gewässer (2000)	no default value
Moore (3000)	no default value
Landwirtschaft (4000)	no default value
Rasen, Staudenfluren (4200)	no default value

- \* DOMAIN NAME dDWP
- \* DESCRIPTION Abstufung Totholzanteil
- \* TYPE Coded Value
- \* MERGE RULE Default value
- \* SPLIT RULE Duplicate

- \* DESCRIPTION OF VALUES Positive real numbers that are automatically generated.

[Hide Field DW\\_L ▲](#)

## FIELD CDRemark ▶

- \* ALIAS Shrubs
- \* DATA TYPE String
- \* WIDTH 6
- \* PRECISION 0
- \* SCALE 0

[Hide Field CDRemark ▲](#)

## FIELD A\_DQ ▶

- \* ALIAS Deciduous
- \* DATA TYPE String
- \* WIDTH 6
- \* PRECISION 0
- \* SCALE 0

## SUBTYPE INFORMATION

## \* SUBTYPE NAME (SUBTYPE CODE)

Rohböden, Extremstandorte (5000)	0
Feldgehölze (6000)	0
Wald (7000)	0
Ver-/Entsorgung (8000)	0
Siedlung, Verkehr (9000)	0
Gewässer (2000)	0
Moore (3000)	0
Landwirtschaft (4000)	0
Rasen, Staudenfluren (4200)	0

- \* DOMAIN NAME dQM\_1\_1
- \* DESCRIPTION Qualitätsangaben zur Interpretation
- \* TYPE Coded Value
- \* MERGE RULE Default value
- \* SPLIT RULE Default value

[Hide Field A\\_DQ ▲](#)

## FIELD A\_Status ▶

- \* ALIAS Coniferous
- \* DATA TYPE String
- \* WIDTH 6
- \* PRECISION 0
- \* SCALE 0

[Hide Field A\\_Status ▲](#)

## FIELD AC3 ▶

- \* ALIAS DI\_REMARK
- \* DATA TYPE String

\* WIDTH 200  
 \* PRECISION 0  
 \* SCALE 0

FIELD DESCRIPTION  
 Data Quality

\* DESCRIPTION SOURCE  
 ESRI

SUBTYPE INFORMATION

\* SUBTYPE NAME (SUBTYPE CODE)

Rohböden, Extremstandorte (5000)	0
Feldgehölze (6000)	0
Wald (7000)	0
Ver-/Entsorgung (8000)	0
Siedlung, Verkehr (9000)	0
Gewässer (2000)	0
Moore (3000)	0
Landwirtschaft (4000)	0
Rasen, Staudenfluren (4200)	0

\* DOMAIN NAME dAC\_4000\_O\_1  
 \* DESCRIPTION  
 \* TYPE Coded Value  
 \* MERGE RULE Default value  
 \* SPLIT RULE Duplicate

\* DESCRIPTION OF VALUES Positive real numbers that are automatically generated.

[Hide Field AC3 ▲](#)

FIELD Bemerkungen ►

\* ALIAS Data Quality  
 \* DATA TYPE Integer  
 \* WIDTH 4  
 \* PRECISION 10  
 \* SCALE 0

[Hide Field Bemerkungen ▲](#)

FIELD SP\_HERB ►

\* ALIAS Dom\_Art Gras-, Kraut-, Zwergsträucher  
 \* DATA TYPE String  
 \* WIDTH 6  
 \* PRECISION 0  
 \* SCALE 0

FIELD DESCRIPTION  
 SHAPE.AREA

\* DESCRIPTION SOURCE  
 ESRI

SUBTYPE INFORMATION

\* SUBTYPE NAME (SUBTYPE CODE)

Rohböden, Extremstandorte (5000)	0
Feldgehölze (6000)	0
Wald (7000)	0
Ver-/Entsorgung (8000)	0
Siedlung, Verkehr (9000)	0
Gewässer (2000)	0
Moore (3000)	0
Landwirtschaft (4000)	-2
Rasen, Staudenfluren (4200)	0

\* DOMAIN NAME dS\_AHDF\_1  
 \* DESCRIPTION  
 \* TYPE Coded Value  
 \* MERGE RULE Default value  
 \* SPLIT RULE Duplicate

\* DESCRIPTION OF VALUES Positive real numbers that are automatically generated.

[Hide Field SP\\_HERB ▲](#)

FIELD SP\_SHRUBS ►

\* ALIAS Eiche  
 \* DATA TYPE Integer  
 \* WIDTH 4  
 \* PRECISION 10  
 \* SCALE 0

FIELD DESCRIPTION  
 SHAPE.LEN

\* DESCRIPTION SOURCE

## ESRI

## SUBTYPE INFORMATION

## \* SUBTYPE NAME (SUBTYPE CODE)

Rohböden, Extremstandorte (5000)	0
Feldgehölze (6000)	0
Wald (7000)	0
Ver-/Entsorgung (8000)	0
Siedlung, Verkehr (9000)	0
Gewässer (2000)	0
Moore (3000)	0
Landwirtschaft (4000)	-2
Rasen, Staudenfluren (4200)	0

## \* DOMAIN NAME dS\_Shrebs\_1

## \* DESCRIPTION

\* TYPE Coded Value

\* MERGE RULE Default value

\* SPLIT RULE Duplicate

\* DESCRIPTION OF VALUES Positive real numbers that are automatically generated.

[Hide Field SP\\_SHRUBS ▲](#)[Hide Details for object SNP\\_NALA.habitap\\_snp\\_vm ▲](#)

## DETAILS FOR OBJECT Habitat\_AN

\* TYPE Relationship

[Hide Fields ▲](#)**Metadata Details ►**

\* METADATA LANGUAGE German (SWITZERLAND)

\* METADATA CHARACTER SET utf8 - 8 bit UCS Transfer Format

SCOPE OF THE DATA DESCRIBED BY THE METADATA \* dataset

SCOPE NAME \* dataset

\* LAST UPDATE 2014-10-08

## ARCGIS METADATA PROPERTIES

METADATA FORMAT ArcGIS 1.0

STANDARD OR PROFILE USED TO EDIT METADATA FGDC

CREATED IN ARCGIS FOR THE ITEM 2013-06-14 14:29:00

LAST MODIFIED IN ARCGIS FOR THE ITEM 2014-10-08 17:06:52

## AUTOMATIC UPDATES

HAVE BEEN PERFORMED Yes

LAST UPDATE 2014-10-08 17:05:06

[Hide Metadata Details ▲](#)**Thumbnail and Enclosures ►**

## THUMBNAIL

THUMBNAIL TYPE JPG

[Hide Thumbnail and Enclosures ▲](#)**FGDC Metadata (read-only) ▼**