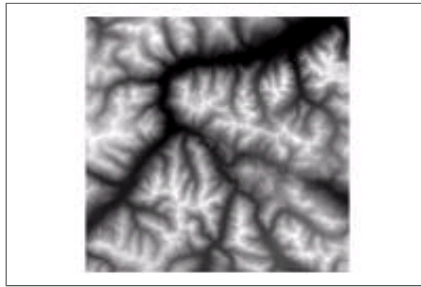


# DTM for ortho SNP 2000 footprint generation

## Raster Dataset



## Tags DTM

### Summary

Project documentation. DTM for footprint generation for the aerial photo flight from 24.Aug.2000.

### Description

DTM fusion of the SNP area

### Credits

created by Stephan Imfeld

### Access and use limitations

Not intended for further use. Use requires the respective contracts with Swisstopo for the DHM25 parts.

## ArcGIS Metadata ►

### Resource Identification ►

#### CITATION

TITLE DTM for ortho SNP 2000 footprint generation

\*PRESENTATION FORMAT digital map

TAGS FOR SEARCHING DTM

#### ABSTRACT (DESCRIPTION)

DTM fusion of the SNP area

#### PURPOSE (SUMMARY)

Project documentation. DTM for footprint generation for the aerial photo flight from 24.Aug.2000.

DATASET LANGUAGES \* German

DATASET CHARACTER SET utf8 - 8 bit UCS Transfer Format

#### RESOURCE MAINTENANCE

UPDATE FREQUENCY not planned

#### RESOURCE CONSTRAINTS

## CONSTRAINTS

### LIMITATIONS OF USE

Not intended for further use. Use requires the respective contracts with Swisstopo for the DHM25 parts.

\* SPATIAL REPRESENTATION TYPE grid

\* PROCESSING ENVIRONMENT Microsoft Windows XP Version 5.1 (Build 2600) Service Pack 3;  
ESRI ArcCatalog 9.3.0.1770

## OTHER EXTENT INFORMATION

### GEOGRAPHIC EXTENT

#### BOUNDING RECTANGLE

\* EXTENT TYPE Full extent in the data's coordinate reference

\* WEST LONGITUDE 792142.48939

\* EAST LONGITUDE 825142.48939

\* NORTH LATITUDE 188981.751573

\* SOUTH LATITUDE 157141.751573

\* EXTENT CONTAINS THE RESOURCE Yes

## CREDITS

created by Stephan Imfeld

Hide ▲

## Spatial Representation ►

### Grid

NUMBER OF DIMENSIONS 2

#### AXIS DIMENSIONS PROPERTIES

##### DIMENSION

\* DIMENSION NAME column (x-axis)

\* DIMENSION SIZE 1650

##### RESOLUTION

\* DISTANCE 20

\* UNITS OF MEASURE unknown

##### DIMENSION

\* DIMENSION NAME row (y-axis)

\* DIMENSION SIZE 1592

##### RESOLUTION

\* DISTANCE 20

\* UNITS OF MEASURE unknown

\* CELL GEOMETRY area

\* TRANSFORMATION PARAMETERS ARE AVAILABLE Yes

Hide ▲

## Data Quality ►

### LINEAGE

#### LINEAGE STATEMENT

DTM\_FOOT\_N = con(isnull

```
(/data/gissnplb2/data_mirror/maindata/snp/gis_topo/dtm20),con(isnull
(/data/gissnplb2/data_mirror/maindata/gis_lt/dhm25),re
sample(/data/dtm1/dhm50/arcinfo/dhm50,20,cubic),resample
(/data/gissnplb2/data_mirror/maindata/gis_lt/dhm25,20,cubic)),/data/gissnplb2/
data_mirror/maindata/snp/gis_topo/dtm20)
```

Hide ▲

## Distribution Information ►

### DISTRIBUTOR

#### AVAILABLE FORMAT

\* **FORMAT NAME** Raster Dataset

#### TRANSFER OPTIONS

\* **TRANSFER SIZE** 10.059

#### ONLINE SOURCE

\* **ONLINE LOCATION (URL)** file://\marmota\gissnplb\ortho\gis\_lb2000\dtm\_foot

\* **CONNECTION PROTOCOL** Local Area Network

**DESCRIPTION** Downloadable Data

Hide ▲

## Metadata Details ►

\* **METADATA LANGUAGE** German

\* **METADATA CHARACTER SET** utf8 - 8 bit UCS Transfer Format

\* **SCOPE OF THE DATA DESCRIBED BY THE METADATA** dataset

\* **SCOPE NAME** dataset

\* **LAST UPDATE** 2013-08-25

#### MAINTENANCE

**UPDATE FREQUENCY** not planned

**NAME OF THE METADATA STANDARD USED** ArcGIS Metadata

**VERSION OF THE METADATA STANDARD** 1.0

Hide ▲

## ESRI Metadata and Item Properties ►

### METADATA PROPERTIES

**ARCGIS** ArcGIS1.0

**METADATA STANDARD OR PROFILE** INSPIRE

**CREATED IN ARCGIS** 2004-10-18T22:11:31

**LAST MODIFIED IN ARCGIS** 2013-08-25T17:30:22

### AUTOMATIC UPDATES

**LAST UPDATE** 2009-01-06T13:50:02

**HAVE BEEN PERFORMED** Yes

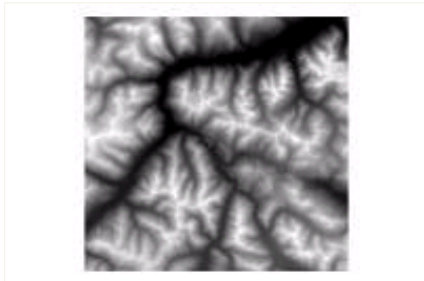
ESRI-ISO METADATA IDENTIFIER {75F0AD4C-0856-4533-8FF9-3F1811FB07B4}

Hide ▲

## ESRI Thumbnails and Enclosures ▶

THUMBNAIL

ENCLOSURE TYPE Picture



Hide ▲

## ESRI Geoprocessing History ▶

PROCESS

COMMAND ISSUED

Hide ▲

## FGDC Metadata ▼