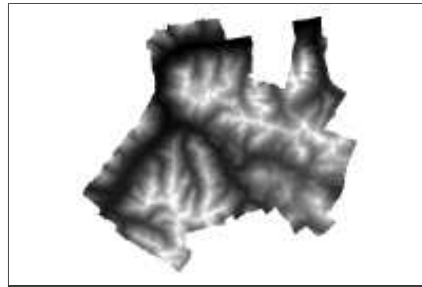


MAIN_SNP_TOPO.dtm4_lhn95

SDE Raster Dataset



Tags

dtm4, dem, dtm, Swiss National Park, lhn95

Summary

There is no summary for this item.

Description

Digital Elevation Model (4m Grid) of the region of Swiss National Park. This DEM is based on the Aerial Image Flight Campaign 2000. The DTM4 was adjusted to LHN95 heights

Credits

There are no credits for this item.

Use limitations

There are no access and use limitations for this item.

Extent

There is no extent for this item.

Scale Range

There is no scale range for this item.

ArcGIS Metadata ►

Citation ►

* TITLE MAIN_SNP_TOPO.dtm4_lhn95

PRESENTATION FORMATS * digital map

[Hide Citation ▲](#)

Resource Details ►

DATASET LANGUAGES * German

SPATIAL REPRESENTATION TYPE * grid

* PROCESSING ENVIRONMENT Microsoft Windows XP Version 5.1 (Build 2600) Service Pack 3; ESRI ArcCatalog 9.3.1.1850

CREDITS

[Hide Resource Details ▲](#)

Extents ►

[Hide Extents ▲](#)

Resource Constraints ►

CONSTRAINTS
LIMITATIONS OF USE

[Hide Resource Constraints ▲](#)

Spatial Reference ►

REFERENCE SYSTEM IDENTIFIER
*

[Hide Spatial Reference ▲](#)

Spatial Data Properties ►

[Hide Spatial Data Properties ▲](#)

Geoprocessing history ►

PROCESS
DATE 2008-09-25 15:04:26
TOOL LOCATION C:\Programme\ArcGIS\ArcToolbox\Toolboxes\Data Management Tools.tbx\CopyRaster
COMMAND ISSUED
CopyRaster Q:\maindata\snp\gis_topo\dtm4_lhn95 "Database Connections\SNP_MAIN_SNP_TOPO.sde\MAIN_SNP_TOPO.dtm4_lhn95" # # # NONE NONE #
INCLUDE IN LINEAGE WHEN EXPORTING METADATA No

[Hide Geoprocessing history ▲](#)

Distribution ►

DISTRIBUTOR ►
AVAILABLE FORMAT
* NAME SDE Raster Dataset

TRANSFER OPTIONS
* TRANSFER SIZE 182.007

ONLINE SOURCE
* LOCATION Server=192.168.1.211; Service=5153; User=main_snp_topo; Version=SDE.DEFAULT
* ACCESS PROTOCOL ArcSDE Connection
* DESCRIPTION Downloadable Data

[Hide Distributor ▲](#)[Hide Distribution ▲](#)

Metadata Details ►

* METADATA LANGUAGE German
* METADATA CHARACTER SET utf8 - 8 bit UCS Transfer Format

SCOPE OF THE DATA DESCRIBED BY THE METADATA * dataset
SCOPE NAME * dataset

* LAST UPDATE 2008-12-01

ARCGIS METADATA PROPERTIES
METADATA FORMAT ESRI-ISO

CREATED IN ARCGIS FOR THE ITEM 2005-09-23 11:39:37
LAST MODIFIED IN ARCGIS FOR THE ITEM 2008-12-01 13:54:35

AUTOMATIC UPDATES
HAVE BEEN PERFORMED Yes
LAST UPDATE 2008-12-01 13:54:35

Hide Metadata Details ▲

Thumbnail and Enclosures ►

THUMBNAIL
THUMBNAIL TYPE BMP

Hide Thumbnail and Enclosures ▲

FGDC Metadata (read-only) ▼