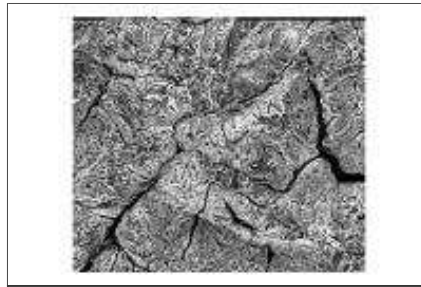


relief_hillshade

File Geodatabase Raster Dataset



Tags

dgm_2m, dgm_4m, atlas, relief, hillshade

Summary

There is no summary for this item.

Description

Hillshade-Raster over the SNP-Area and vicinity, This Raster is created from the dgm_4m Elevation-Modell

Credits

There are no credits for this item.

Use limitations

none

Extent

West 9.750002 **East** 10.693240
North 46.991458 **South** 46.420954

Scale Range

There is no scale range for this item.

ArcGIS Metadata ►

Topics and Keywords ►

* CONTENT TYPE Downloadable Data

Hide Topics and Keywords ▲

Citation ►

* TITLE relief_hillshade

PRESENTATION FORMATS * digital table

Hide Citation ▲

Resource Details ►

DATASET LANGUAGES * German (SWITZERLAND)

SPATIAL REPRESENTATION TYPE * grid

* PROCESSING ENVIRONMENT Microsoft Windows 7 Version 6.1 (Build 7601) Service Pack 1; Esri

ArcGIS 10.1.1.3300

CREDITS

ARCGIS ITEM PROPERTIES

- * NAME relief_hillshade
- * LOCATION file:///\\marmota\Data\maindata\snp\gis_topo\gis_pub\relief_snp.gdb
- * ACCESS PROTOCOL Local Area Network

[Hide Resource Details ▲](#)**Extents ►**

EXTENT

GEOGRAPHIC EXTENT

BOUNDING RECTANGLE

- EXTENT TYPE Extent used for searching
- * WEST LONGITUDE 9.750002
- * EAST LONGITUDE 10.693240
- * NORTH LATITUDE 46.991458
- * SOUTH LATITUDE 46.420954
- * EXTENT CONTAINS THE RESOURCE Yes

BOUNDING RECTANGLE

- EXTENT TYPE Extent used for searching
- * WEST LONGITUDE 9.750002
- * EAST LONGITUDE 10.693240
- * NORTH LATITUDE 46.991458
- * SOUTH LATITUDE 46.420954
- * EXTENT CONTAINS THE RESOURCE Yes

EXTENT IN THE ITEM'S COORDINATE SYSTEM

- * WEST LONGITUDE 2777498.021341
- * EAST LONGITUDE 2847502.021341
- * SOUTH LATITUDE 1146011.058467
- * NORTH LATITUDE 1206983.058467
- * EXTENT CONTAINS THE RESOURCE Yes

[Hide Extents ▲](#)**Resource Constraints ►**

CONSTRAINTS

LIMITATIONS OF USE

none

[Hide Resource Constraints ▲](#)**Spatial Reference ►**

ARCGIS COORDINATE SYSTEM

- * TYPE Projected
- * GEOGRAPHIC COORDINATE REFERENCE GCS_CH1903+
- * PROJECTION CH1903+_Hotine_Oblique_Mercator_Azimuth_Center
- * COORDINATE REFERENCE DETAILS

PROJECTED COORDINATE SYSTEM

- X ORIGIN -27386400
- Y ORIGIN -32067900
- XY SCALE 140996569.55187955
- Z ORIGIN -100000

Z SCALE 10000
 M ORIGIN -100000
 M SCALE 10000
 XY TOLERANCE 0.001
 Z TOLERANCE 0.001
 M TOLERANCE 0.001
 HIGH PRECISION true
 WELL-KNOWN TEXT PROJCS
 ["CH1903+_Hotine_Oblique_Mercator_Azimuth_Center",GEOGCS
 ["GCS_CH1903+",DATUM["D_CH1903+",SPHEROID
 ["Bessel_1841",6377397.155,299.1528128]],PRIMEM["Greenwich",0.0],UNIT
 ["Degree",0.0174532925199433]],PROJECTION
 ["Hotine_Oblique_Mercator_Azimuth_Center"],PARAMETER
 ["false_easting",2600000.0],PARAMETER["false_northing",1200000.0],PARAMETER
 ["scale_factor",1.0],PARAMETER["azimuth",90.0],PARAMETER
 ["longitude_of_center",7.439583333333334],PARAMETER
 ["latitude_of_center",46.95240555555557],UNIT["Meter",1.0]]

REFERENCE SYSTEM IDENTIFIER
 VALUE 0

[Hide Spatial Reference ▲](#)

Spatial Data Properties ►

GEORECTIFIED GRID ►

* NUMBER OF DIMENSIONS 2

AXIS DIMENSIONS PROPERTIES

DIMENSION TYPE column (x-axis)

* DIMENSION SIZE 40000

* RESOLUTION 1.250000 Meter

AXIS DIMENSIONS PROPERTIES

DIMENSION TYPE row (y-axis)

* DIMENSION SIZE 40000

* RESOLUTION 1.250000 Meter

* CELL GEOMETRY area

* POINT IN PIXEL center

* TRANSFORMATION PARAMETERS ARE AVAILABLE Yes

* CHECK POINTS ARE AVAILABLE No

CORNER POINTS

* POINT 785000.000000 150000.000000

* POINT 785000.000000 200000.000000

* POINT 835000.000000 200000.000000

* POINT 835000.000000 150000.000000

* CENTER POINT 810000.000000 175000.000000

[Hide Georectified Grid ▲](#)

ARCGIS RASTER PROPERTIES ►

GENERAL INFORMATION

* PIXEL DEPTH 8

* COMPRESSION TYPE PACKBITS

* NUMBER OF BANDS 1

* RASTER FORMAT TIFF

- * SOURCE TYPE discrete
- * PIXEL TYPE unsigned integer
- * NO DATA VALUE 256
- * HAS COLORMAP Yes
- * HAS PYRAMIDS Yes

[Hide ArcGIS Raster Properties ▲](#)

[Hide Spatial Data Properties ▲](#)

Spatial Data Content ►

IMAGE DESCRIPTION

- * TYPE OF INFORMATION thematic classification

BAND INFORMATION

- * DESCRIPTION Band_1

UNITS

- * SYMBOL Meter
- * NUMBER OF BITS PER VALUE 8

[Hide Spatial Data Content ▲](#)

Distribution ►

DISTRIBUTOR ►

AVAILABLE FORMAT

- * NAME Raster Dataset

TRANSFER OPTIONS

- * TRANSFER SIZE 0.000

ONLINE SOURCE

- * LOCATION file:///\\marmota\GisData\maindata\images\pk25\snp.tif
- * ACCESS PROTOCOL Local Area Network
- * DESCRIPTION Downloadable Data

[Hide Distributor ▲](#)

DISTRIBUTION FORMAT

- * NAME File Geodatabase Raster Dataset

[Hide Distribution ▲](#)

Fields ►

DETAILS FOR OBJECT snp.tif.vat ►

- * TYPE Table
- * ROW COUNT 256

FIELD OID ►

- * ALIAS OID
- * DATA TYPE OID
- * WIDTH 4
- * PRECISION 0
- * SCALE 0
- * FIELD DESCRIPTION
Internal feature number.

* DESCRIPTION SOURCE
ESRI

* DESCRIPTION OF VALUES Sequential unique whole numbers that are automatically generated.

[Hide Field OID ▲](#)

FIELD Value ▶

* ALIAS Value
* DATA TYPE Integer
* WIDTH 9
* PRECISION 9
* SCALE 0

[Hide Field Value ▲](#)

FIELD Red ▶

* ALIAS Red
* DATA TYPE Double
* WIDTH 19
* PRECISION 0
* SCALE 0

[Hide Field Red ▲](#)

FIELD Green ▶

* ALIAS Green
* DATA TYPE Double
* WIDTH 19
* PRECISION 0
* SCALE 0

[Hide Field Green ▲](#)

FIELD Blue ▶

* ALIAS Blue
* DATA TYPE Double
* WIDTH 19
* PRECISION 0
* SCALE 0

[Hide Field Blue ▲](#)

[Hide Details for object snp.tif.vat ▲](#)

[Hide Fields ▲](#)

Metadata Details ▶

* METADATA LANGUAGE German (SWITZERLAND)
* METADATA CHARACTER SET utf8 - 8 bit UCS Transfer Format

SCOPE OF THE DATA DESCRIBED BY THE METADATA * dataset
SCOPE NAME * dataset

* LAST UPDATE 2015-01-13

ARCGIS METADATA PROPERTIES

METADATA FORMAT ESRI-ISO

CREATED IN ARCGIS FOR THE ITEM 2006-02-07 11:53:13

LAST MODIFIED IN ARCGIS FOR THE ITEM 2015-01-13 08:44:03

AUTOMATIC UPDATES

HAVE BEEN PERFORMED Yes

LAST UPDATE 2015-01-13 08:44:03

Hide Metadata Details ▲

Thumbnail and Enclosures ►

THUMBNAIL

THUMBNAIL TYPE JPG

Hide Thumbnail and Enclosures ▲

FGDC Metadata (read-only) ▼