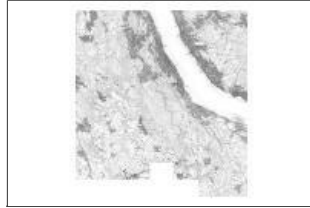


Raster-Übersichtsplan Kanton Zürich 2015

File Geodatabase Raster Dataset



Tags
Übersichtsplan

Summary

Raster-Übersichtsplan des Kantons Zürich. Geliefert am 02.11.2015,

Description

Der digitale Raster-Übersichtsplan des Kantons Zürich wird seit 1998 digital nachgeführt.

Er besteht aus 619 Rahmenblättern und kann u.a. für folgende Anwendungen verwendet werden:

- Basiskarte (Hintergrundinformation) für thematische Karten
- Visualisierung am Bildschirm
- Planungsgrundlagen

Mehr Informationen:

<http://geolion.zh.ch/geodatensatz/show?nbid=884>

Stand der Daten:

Horgen: Daten der AV 03.2014 UP

Hirzel: Daten der AV 03.2014 UP und dann AV5UP ab 12.2014

Hausen am Albis: Daten der AV 03.2014 UP und dann AV5UP ab 12.2014

Langnau am Albis: Daten der AV 09.2013 UP

Thalwil: Daten der AV 04.2013 UP und dann AV5UP ab 12.2014

Oberrieden: AV5UP 12.2014

UP = der alte Übersichtsplan

UP5AV = der neue UP generiert ab den Daten der AV jeweils am Jahresende

Credits

Siehe: <http://geolion.zh.ch/geodatensatz/show?nbid=884>

Use limitations

Mehr Informationen:

<http://geolion.zh.ch/geodatensatz/show?nbid=884>

Extent

West 8.454112 East 8.659550
North 47.339239 South 47.188864

Scale Range

Maximum (zoomed in) 1:5,000
Minimum (zoomed out) 1:150,000,000

ArcGIS Metadata ►

Topics and Keywords ►

THEMES OR CATEGORIES OF THE RESOURCE planningCadastre

* CONTENT TYPE Downloadable Data

EXPORT TO FGDC CSDGM XML FORMAT AS RESOURCE DESCRIPTION No

[Hide Topics and Keywords ▲](#)

Citation ►

TITLE Raster-Übersichtsplan Kanton Zürich 2015

CREATION DATE 2015-11-02 00:00:00

PUBLICATION DATE 2015-11-02 00:00:00

REVISION DATE 2015-11-02 00:00:00

PRESENTATION FORMATS * digital table

[Hide Citation ▲](#)

Citation Contacts ▶

RESPONSIBLE PARTY

INDIVIDUAL'S NAME Erich Schwengeler
 ORGANIZATION'S NAME Amt für Raumentwicklung, Abteilung Geoinformation, Fachstelle Vermessung
 CONTACT'S ROLE point of contact

CONTACT INFORMATION ▶

PHONE
 VOICE +41 43 259 30 22

ADDRESS

TYPE
 DELIVERY POINT Stampfenbachstrasse 12
 CITY Zürich
 POSTAL CODE 8090
 COUNTRY CH
 E-MAIL ADDRESS erich.schwengeler@bd.zh.ch

[Hide Contact information ▲](#)[Hide Citation Contacts ▲](#)

Resource Details ▶

DATASET LANGUAGES German (SWITZERLAND)
 DATASET CHARACTER SET utf8 - 8 bit UCS Transfer Format

SPATIAL REPRESENTATION TYPE * grid

* PROCESSING ENVIRONMENT Microsoft Windows Vista Version 6.0 (Build 6002) Service Pack 2; Esri ArcGIS 10.1.1.3300

CREDITS

Siehe: <http://geolion.zh.ch/geodatensatz/show?nbid=884>

ARCgis ITEM PROPERTIES

* NAME UEPLAN_5K_2015
 * LOCATION file://\szh.loc\wpz\Wildnispark_Zuerich\Forschung\gis\maindata\cant_zh\103_UeP\gis_pub\103_uep.gdb
 * ACCESS PROTOCOL Local Area Network

[Hide Resource Details ▲](#)

Extents ▶

EXTENT

GEOGRAPHIC EXTENT

BOUNDING RECTANGLE

EXTENT TYPE Extent used for searching
 * WEST LONGITUDE 8.454112
 * EAST LONGITUDE 8.659550
 * NORTH LATITUDE 47.339239
 * SOUTH LATITUDE 47.188864
 * EXTENT CONTAINS THE RESOURCE Yes

EXTENT IN THE ITEM'S COORDINATE SYSTEM

* WEST LONGITUDE 676875.000000
 * EAST LONGITUDE 692187.500000
 * SOUTH LATITUDE 227000.000000
 * NORTH LATITUDE 243500.000000
 * EXTENT CONTAINS THE RESOURCE Yes

[Hide Extents ▲](#)

Resource Points of Contact ▶

POINT OF CONTACT

INDIVIDUAL'S NAME Erich Schwengeler
 ORGANIZATION'S NAME Amt für Raumentwicklung, Abteilung Geoinformation, Fachstelle Vermessung
 CONTACT'S ROLE point of contact

CONTACT INFORMATION ▶

PHONE
 VOICE +41 43 259 30 22

ADDRESS

TYPE
 DELIVERY POINT Stampfenbachstrasse 12
 CITY Zürich
 POSTAL CODE 8090
 COUNTRY CH

E-MAIL ADDRESS erich.schwengeler@bd.zh.ch

[Hide Contact information ▲](#)

[Hide Resource Points of Contact ▲](#)

Resource Maintenance ►

RESOURCE MAINTENANCE

UPDATE FREQUENCY as needed

[Hide Resource Maintenance ▲](#)

Resource Constraints ►

CONSTRAINTS

LIMITATIONS OF USE

Mehr Informationen: <http://geolion.zh.ch/geodatensatz/show?nbid=884>

[Hide Resource Constraints ▲](#)

Spatial Reference ►

ARCGIS COORDINATE SYSTEM

* TYPE Projected

* GEOGRAPHIC COORDINATE REFERENCE GCS_CH1903

* PROJECTION CH1903_LV03

* COORDINATE REFERENCE DETAILS

PROJECTED COORDINATE SYSTEM

WELL-KNOWN IDENTIFIER 21781

X ORIGIN -29386400

Y ORIGIN -33067900

XY SCALE 140996569.55187955

Z ORIGIN -100000

Z SCALE 10000

M ORIGIN -100000

M SCALE 10000

XY TOLERANCE 0.001

Z TOLERANCE 0.001

M TOLERANCE 0.001

HIGH PRECISION true

LATEST WELL-KNOWN IDENTIFIER 21781

WELL-KNOWN TEXT PROJCS["CH1903_LV03",GEOGCS["GCS_CH1903",DATUM["D_CH1903",SPHEROID["Besse1_1841",6377397.155,299.1528128]],PRIMEM["Greenwich",0.0],UNIT["Degree",0.0174532925199433]],PROJECTION["Hotine_Oblique_Mercator_Azimuth_Center"],PARAMETER["false_easting",600000.0],PARAMETER["false_northing",200000.0],PARAMETER["scale_factor",1.0],PARAMETER["azimuth",90.0],PARAMETER["longitude_of_center",7.439583333333333],PARAMETER["latitude_of_center",46.95240555555556],UNIT["Meter",1.0],AUTHORITY["EPSG",21781]]

REFERENCE SYSTEM IDENTIFIER

* VALUE 21781

* CODESPACE EPSG

* VERSION 7.11.2

[Hide Spatial Reference ▲](#)

Geoprocessing history ►

PROCESS

PROCESS NAME

DATE 2015-11-03 12:28:33

TOOL LOCATION c:\program files\arcgis\desktop10.1\ArcToolbox\Toolboxes\Data Management Tools.tbx\CopyRaster

COMMAND ISSUED

CopyRaster \\szh.loc\wpz\Wildnispark_Zuerich\Forschung\gis\maindata\cant_zh\lieferung_1663_20151102

\\103_UeP\b2705_8bit.tif

\\szh.loc\wpz\Wildnispark_Zuerich\Forschung\gis\maindata\cant_zh\103_UeP\gis_pub\103_uep.gdb\b2705_8bit # #

256 NONE NONE # NONE NONE

INCLUDE IN LINEAGE WHEN EXPORTING METADATA No

PROCESS

PROCESS NAME

DATE 2015-11-03 16:17:13

TOOL LOCATION c:\program files\arcgis\desktop10.1\ArcToolbox\Toolboxes\Data Management Tools.tbx\Mosaic

COMMAND ISSUED

Mosaic \\szh.loc\wpz\Wildnispark_Zuerich\Forschung\gis\maindata\cant_zh\lieferung_1663_20151102

\\103_UeP\b2706.tif;\\szh.loc\wpz\Wildnispark_Zuerich\Forschung\gis\maindata\cant_zh\lieferung_1663_20151102

\\103_UeP\b2707.tif;\\szh.loc\wpz\Wildnispark_Zuerich\Forschung\gis\maindata\cant_zh\lieferung_1663_20151102

\\103_UeP\b2708.tif;\\szh.loc\wpz\Wildnispark_Zuerich\Forschung\gis\maindata\cant_zh\lieferung_1663_20151102

\\103_UeP\b2709.tif;\\szh.loc\wpz\Wildnispark_Zuerich\Forschung\gis\maindata\cant_zh\lieferung_1663_20151102

\\103_UeP\b2710.tif;\\szh.loc\wpz\Wildnispark_Zuerich\Forschung\gis\maindata\cant_zh\lieferung_1663_20151102

\\103_UeP\b2711.tif;\\szh.loc\wpz\Wildnispark_Zuerich\Forschung\gis\maindata\cant_zh\lieferung_1663_20151102

\\103_UeP\b2805.tif;\\szh.loc\wpz\Wildnispark_Zuerich\Forschung\gis\maindata\cant_zh\lieferung_1663_20151102

\\103_UeP\b2806.tif;\\szh.loc\wpz\Wildnispark_Zuerich\Forschung\gis\maindata\cant_zh\lieferung_1663_20151102

\\103_UeP\b2807.tif;\\szh.loc\wpz\Wildnispark_Zuerich\Forschung\gis\maindata\cant_zh\lieferung_1663_20151102


```

\\szh.loc\wpz\Wildnispark_Zuerich\Forschung\gis\maindata\cant_zh\103_UeP\gis_pub\103_uep.gdb\UEPLAN_5K_2015
INCLUDE_SUBDIRECTORIES BUILD_PYRAMIDS CALCULATE_STATISTICS NONE # NONE 1 1 # -1 NONE BILINEAR DEFAULT 75
OVERWRITE
INCLUDE IN LINEAGE WHEN EXPORTING METADATA No

```

PROCESS

```

PROCESS NAME
DATE 2015-11-04 08:40:54
TOOL LOCATION c:\program files\arcgis\desktop10.1\ArcToolbox\Toolboxes\Data Management Tools.tbx\CopyRaster
COMMAND ISSUED
CopyRaster
\\szh.loc\wpz\Wildnispark_Zuerich\Forschung\gis\maindata\cant_zh\103_UeP\gis_pub\103_uep.gdb\UEPLAN_5K_2015
D:\daten\ueplan.gdb\UEPLAN_5K_2015 # # 256 NONE NONE # NONE NONE
INCLUDE IN LINEAGE WHEN EXPORTING METADATA No

```

PROCESS

```

PROCESS NAME
DATE 2015-11-04 10:39:06
TOOL LOCATION c:\program files\arcgis\desktop10.1\ArcToolbox\Toolboxes\Data Management Tools.tbx\CalculateStatistics
COMMAND ISSUED
CalculateStatistics D:\daten\ueplan.gdb\UEPLAN_5K_2015 1 1 # OVERWRITE "Feature Set"
INCLUDE IN LINEAGE WHEN EXPORTING METADATA No

```

PROCESS

```

PROCESS NAME
DATE 2015-11-04 10:41:17
TOOL LOCATION c:\program files\arcgis\desktop10.1\ArcToolbox\Toolboxes\Data Management Tools.tbx\BuildPyramids
COMMAND ISSUED
BuildPyramids D:\daten\ueplan.gdb\UEPLAN_5K_2015 -1 NONE BILINEAR DEFAULT 75 OVERWRITE
INCLUDE IN LINEAGE WHEN EXPORTING METADATA No

```

[Hide Geoprocessing history ▲](#)

Distribution ►

DISTRIBUTION FORMAT

* NAME File Geodatabase Raster Dataset

[Hide Distribution ▲](#)

Metadata Details ►

METADATA LANGUAGE German (SWITZERLAND)

* METADATA CHARACTER SET utf8 - 8 bit UCS Transfer Format

SCOPE OF THE DATA DESCRIBED BY THE METADATA * dataset

SCOPE NAME * dataset

* LAST UPDATE 2015-11-09

ARCGIS METADATA PROPERTIES

METADATA FORMAT ArcGIS 1.0

METADATA STYLE ISO 19139 Metadata Implementation Specification

STANDARD OR PROFILE USED TO EDIT METADATA ISO19139

CREATED IN ARCGIS FOR THE ITEM 2015-11-03 12:28:29

LAST MODIFIED IN ARCGIS FOR THE ITEM 2015-11-09 11:31:10

AUTOMATIC UPDATES

HAVE BEEN PERFORMED Yes

LAST UPDATE 2015-11-09 11:29:27

[Hide Metadata Details ▲](#)

Metadata Contacts ►

METADATA CONTACT

INDIVIDUAL'S NAME Ronald Schmidt

ORGANIZATION'S NAME Stiftung Wildnispark Zürich

CONTACT'S ROLE point of contact

CONTACT INFORMATION ►

ADDRESS

TYPE postal

DELIVERY POINT Alte Sihltalstrasse 38

CITY Sihlwald

POSTAL CODE 8135

COUNTRY CH

E-MAIL ADDRESS gis@wildnisaprk.ch

[Hide Contact information ▲](#)

[Hide Metadata Contacts ▲](#)

Metadata Maintenance ▶

MAINTENANCE

UPDATE FREQUENCY as needed

Hide Metadata Maintenance ▲

Thumbnail and Enclosures ▶

THUMBNAIL

THUMBNAIL TYPE JPG

Hide Thumbnail and Enclosures ▲

FGDC Metadata (read-only) ▼