

~~XI.~~ S2
1:500

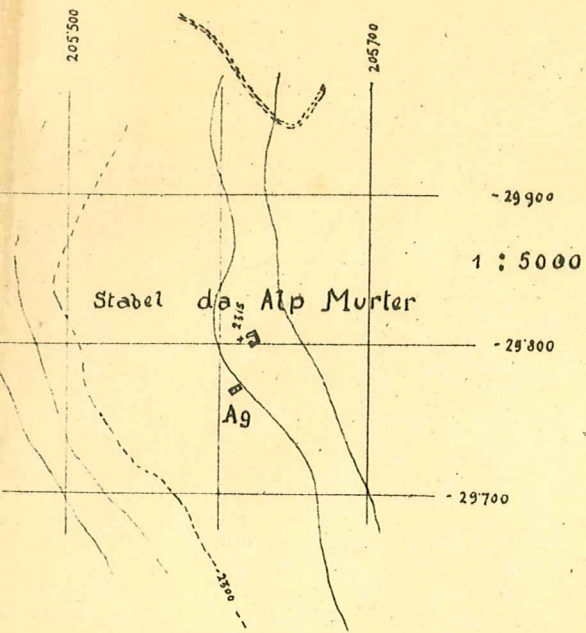
1:5000

S2
Plan Prä Spöl

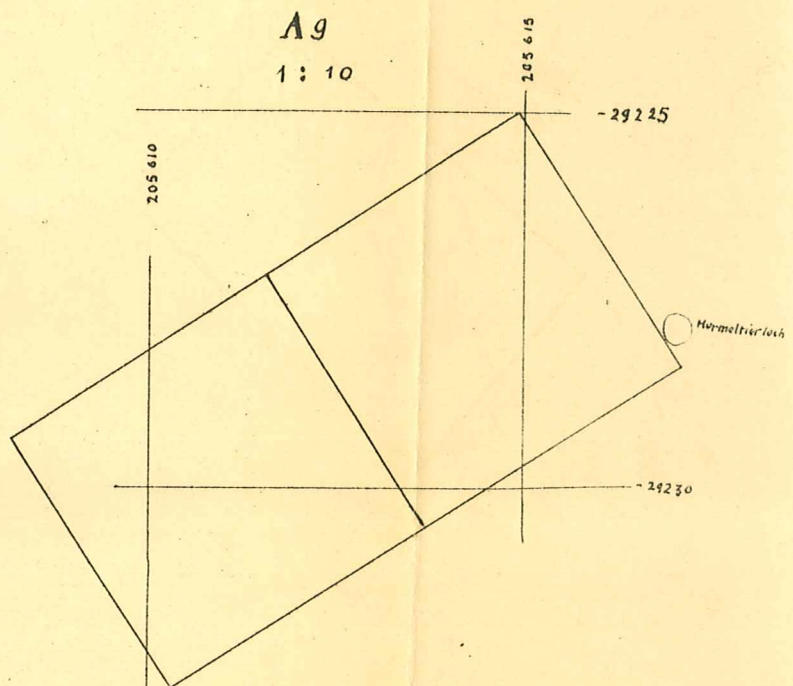
Dauerflächen
Plan Prä Spöl

Blatt N°

Brachypodium pinnatum
~~XI.~~ S2a
1:100



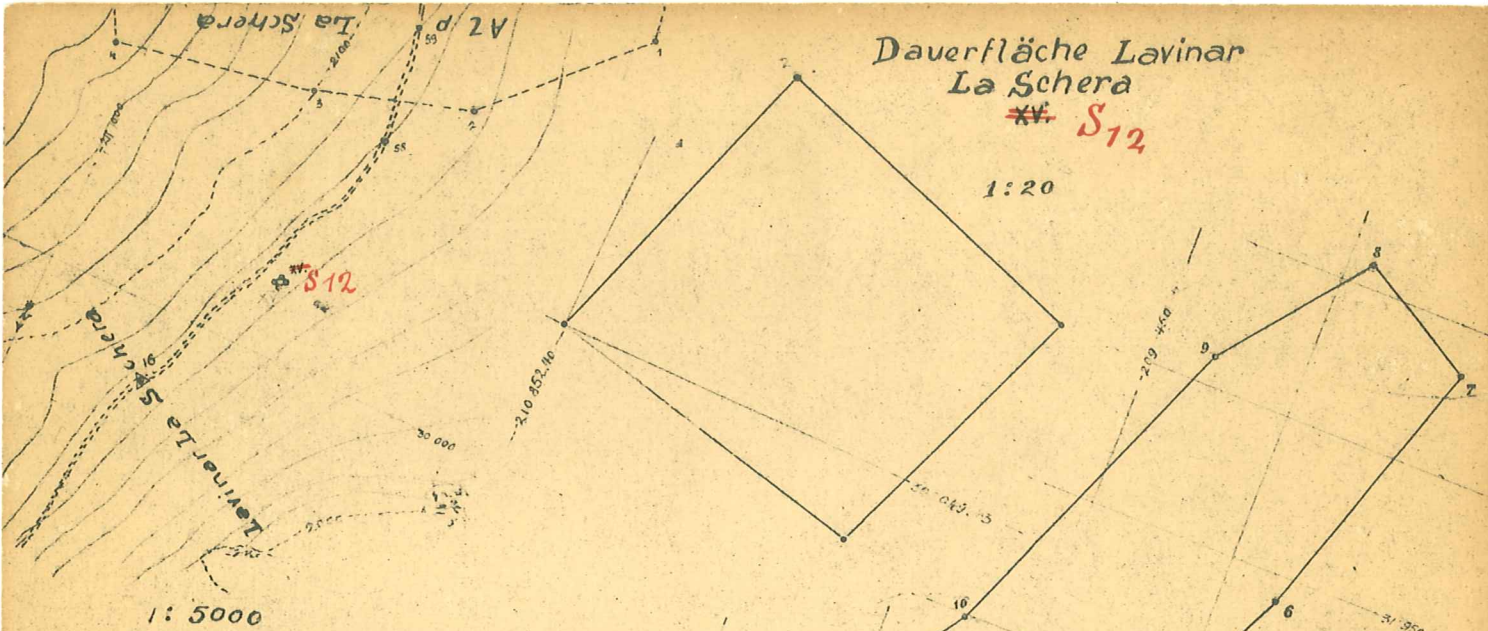
Dauerfläche Stabel Alp Murter



Dauerfläche Lavinar
La Schera

~~XIV~~ S12

1:20



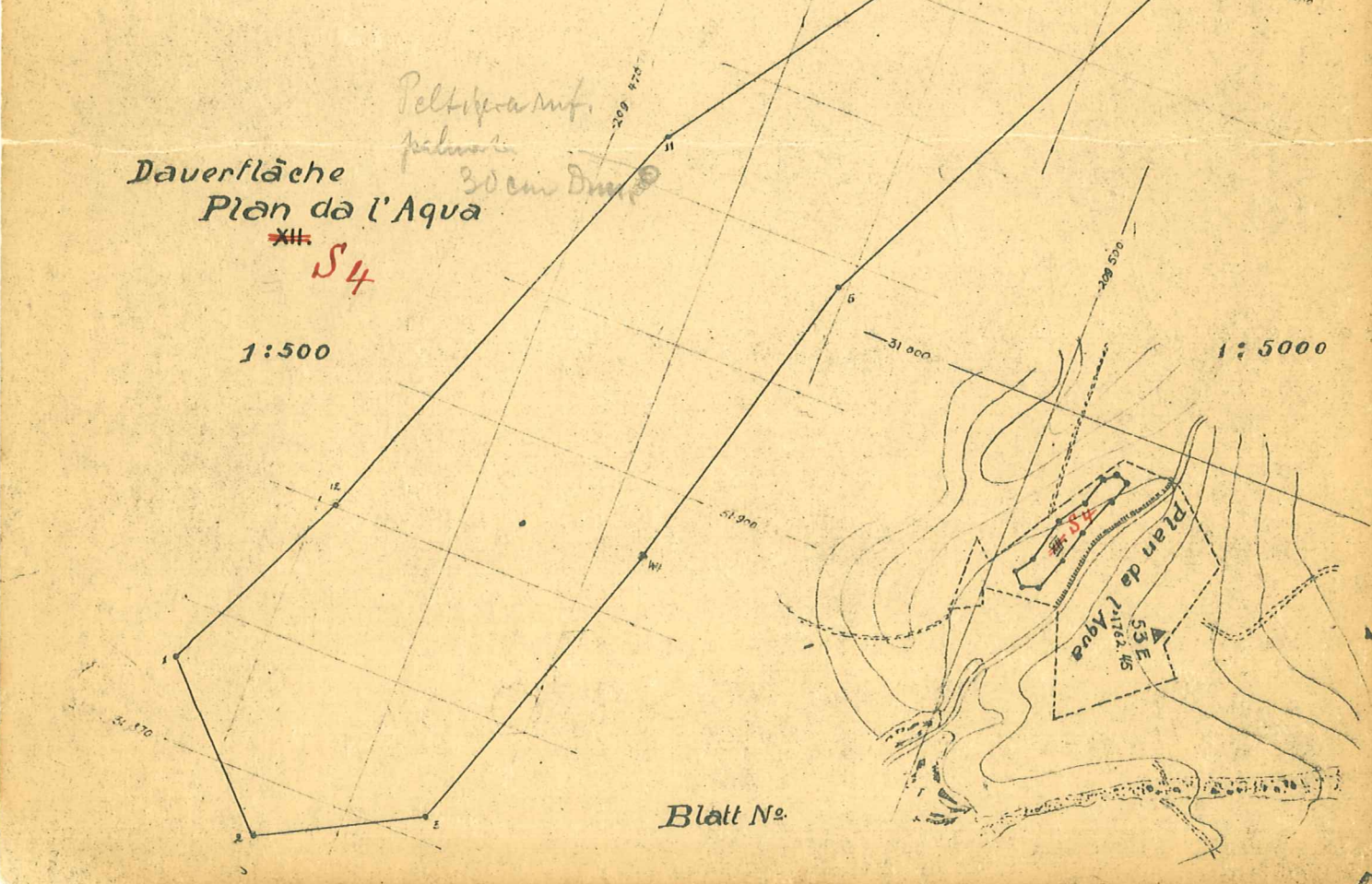
1:5000

Peltigera mt.
palustris
30 cm Durchmesser

Dauerfläche
Plan da l'Aqua

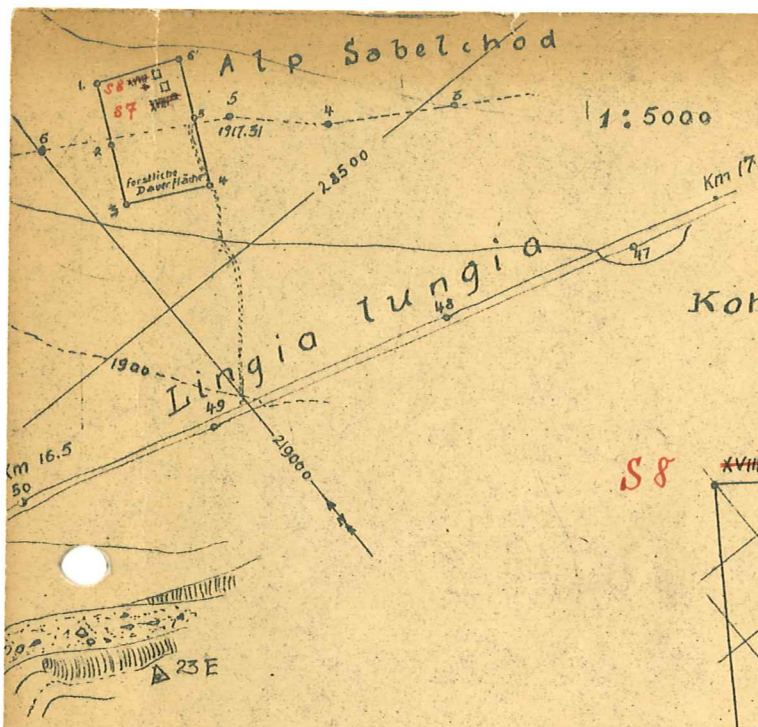
~~XIII~~ S4

1:500

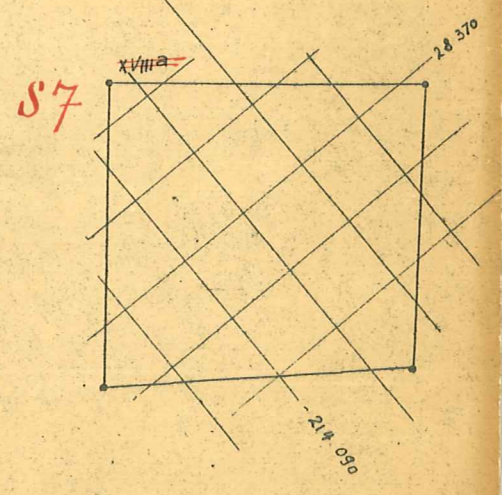
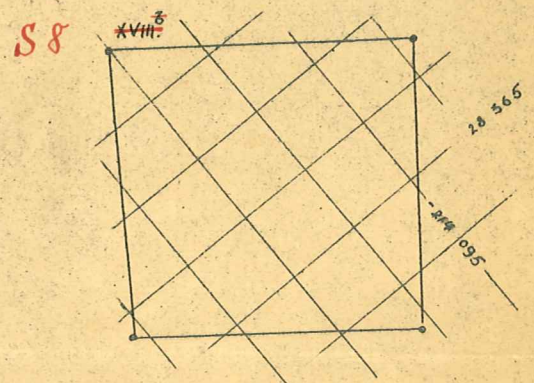


1:5000

Blatt No.



Dauerflächen
Kohlplatz Alp Stabelchod
1:100



god Ual dal Batsch

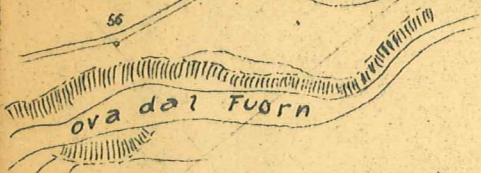
S6

55

1884.5

28500

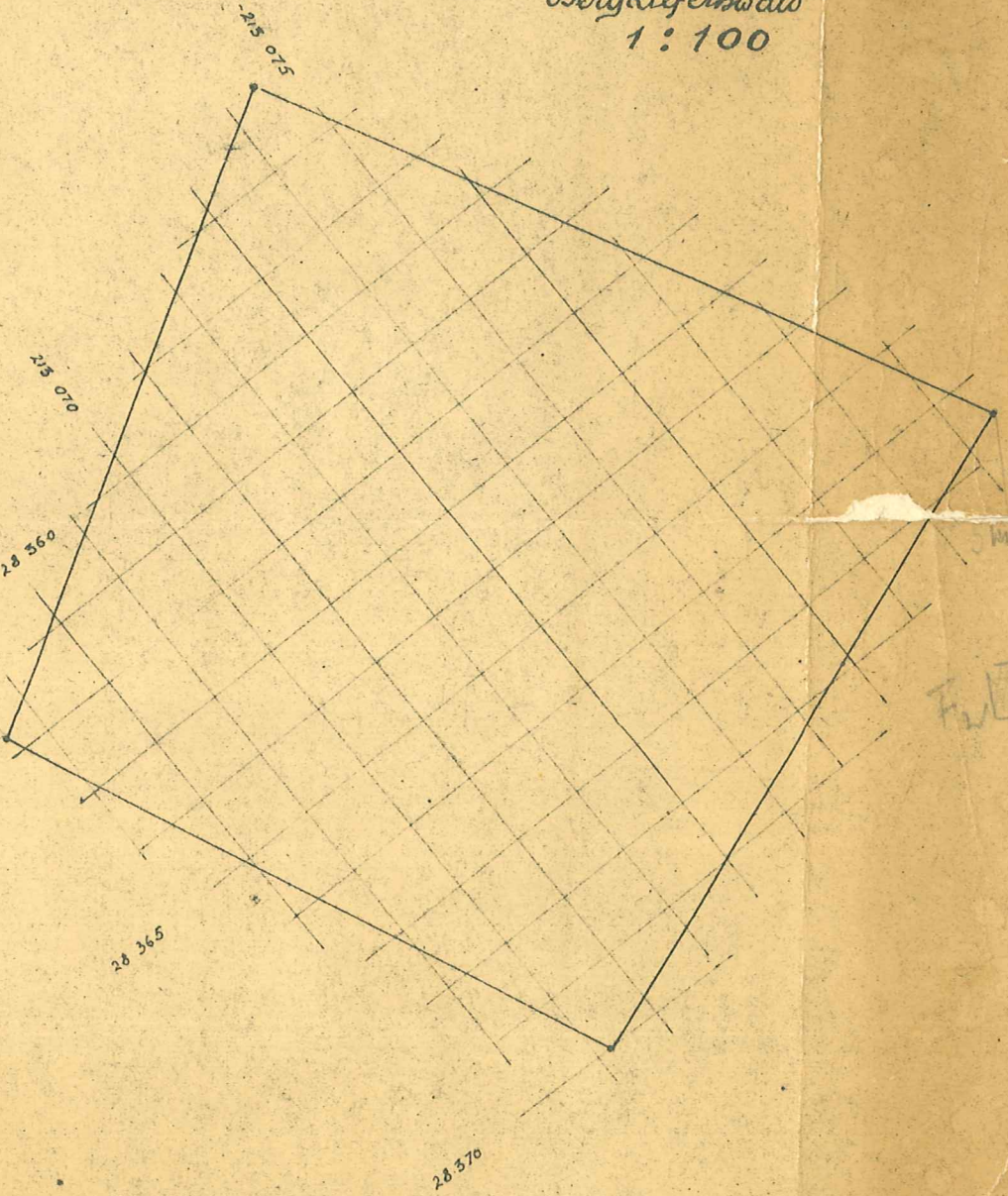
56



ova dal Fuorn

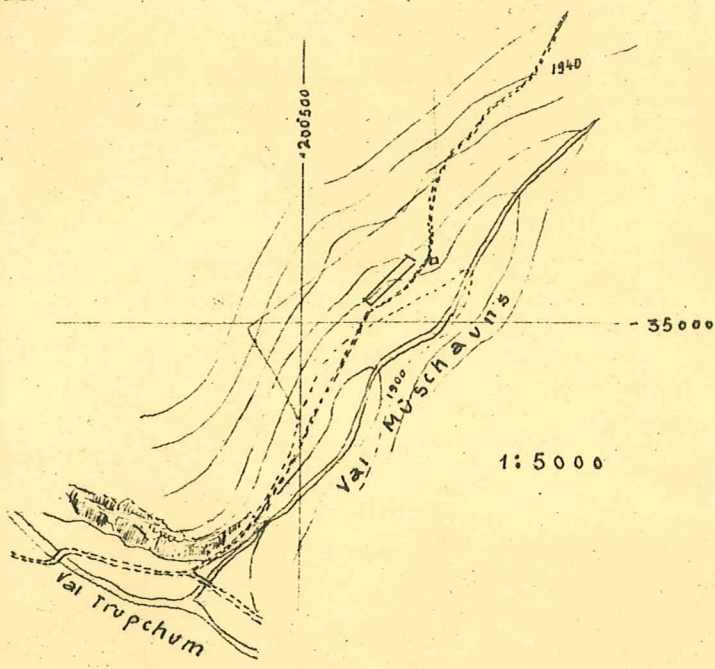
1:5000 213000

Dauerfläche ~~IV~~ S6
god Ual dal Batsch
Bergkiefernwald
1:100

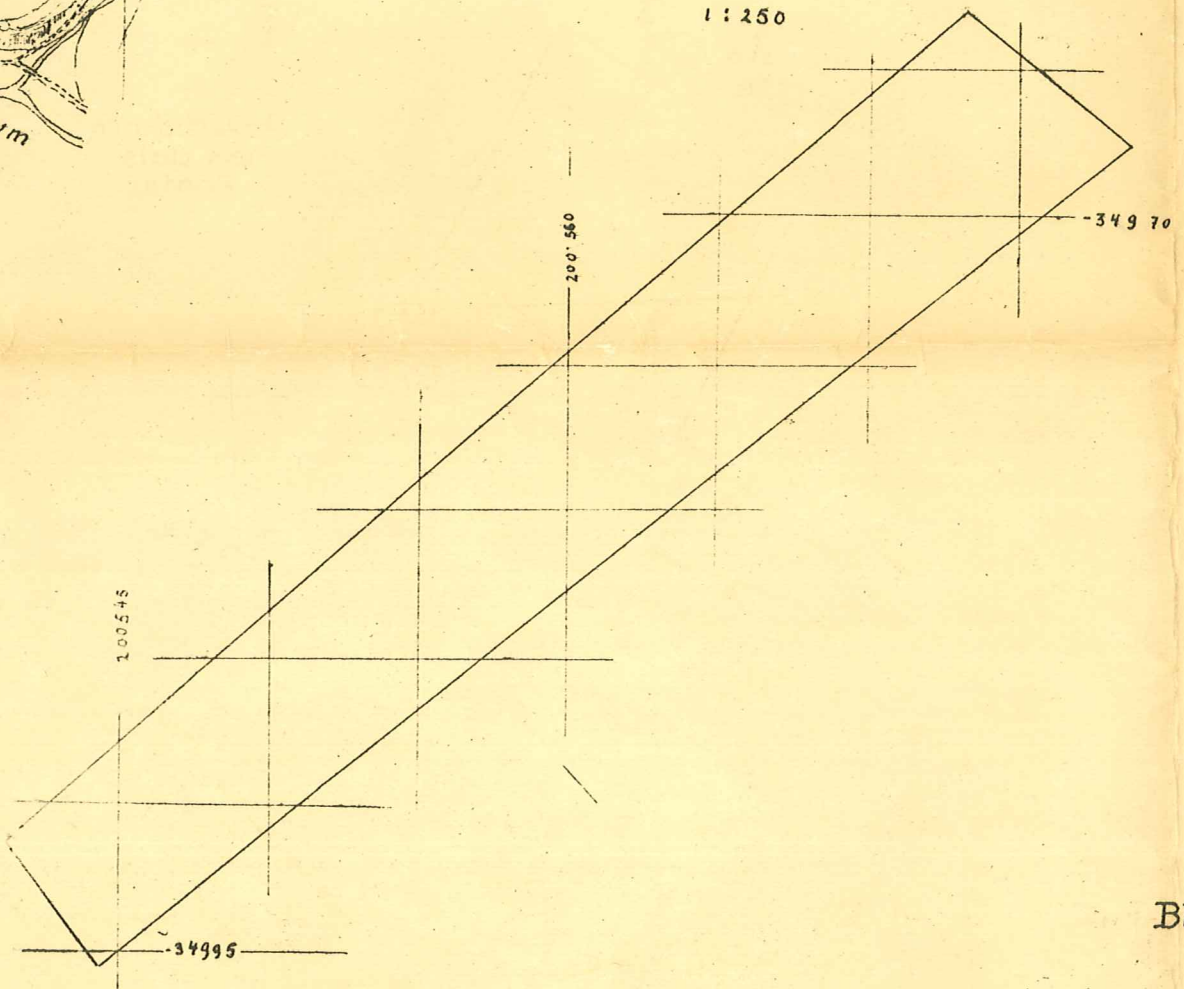


F1

Blatt No.

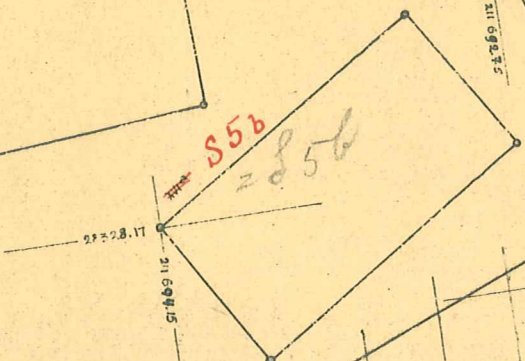
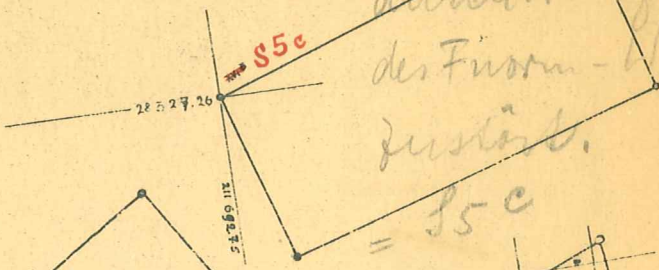
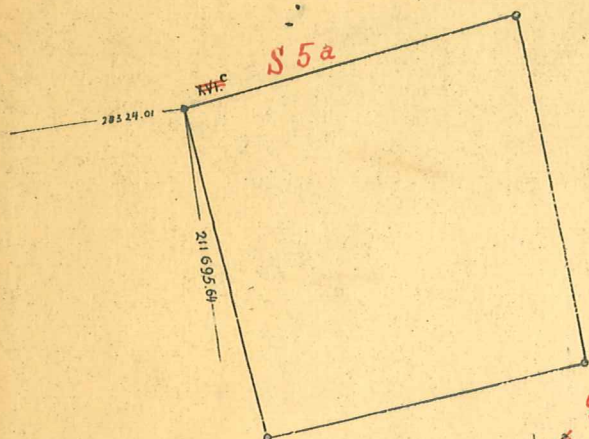


Dauerfläche Grass Val Müschauns
S 17

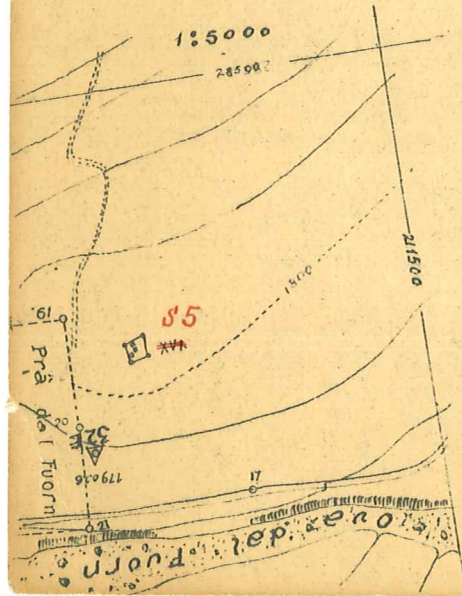
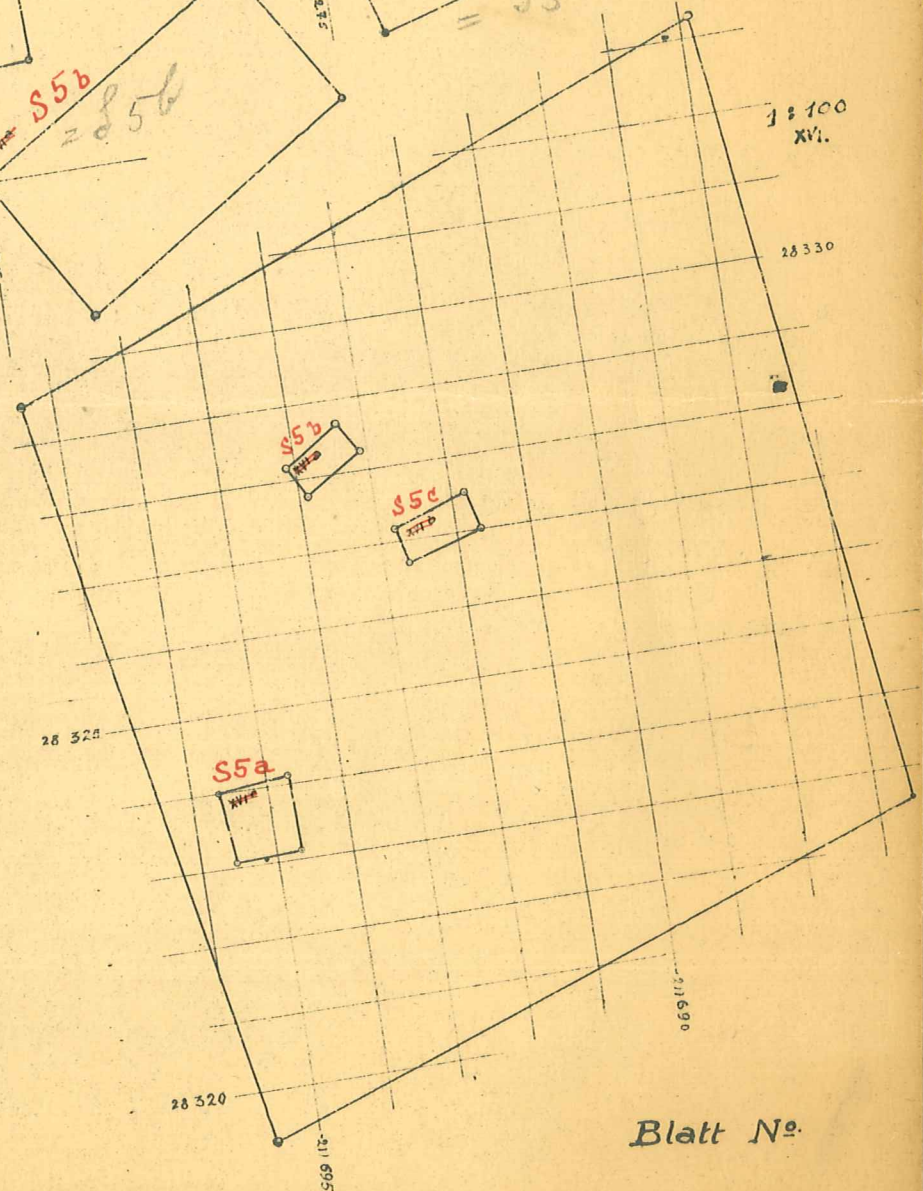


Kleinparzellen im Maßstab
1:20

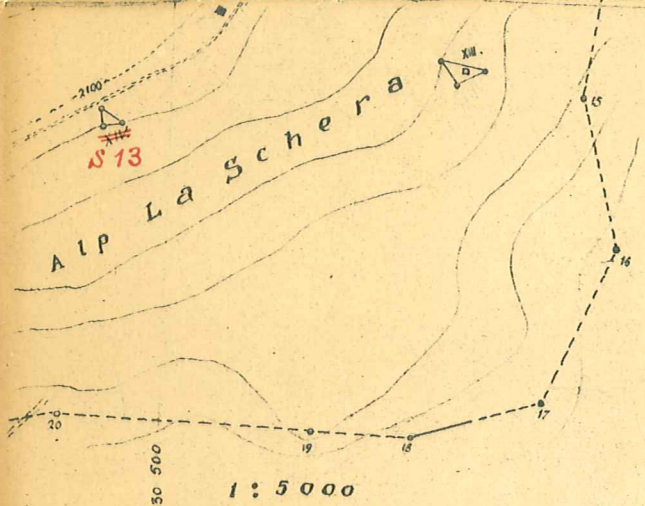
leider von 2 Jahren
durch Verfallung
des Fuorn - Wirtes
zerstört.
= S5c



Dauerflächen
God dal Fuorn
XVI. S5 S5



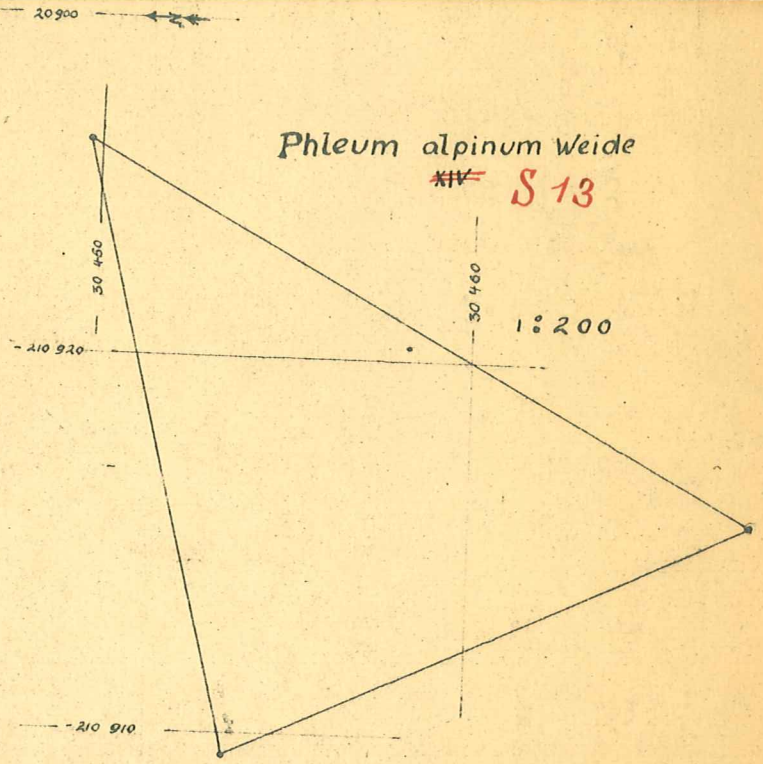
Blatt No.



Dauerflächen
Weide Alp La Schera

1:5000

1:200



Nardetum

XIII S 14

S 14a

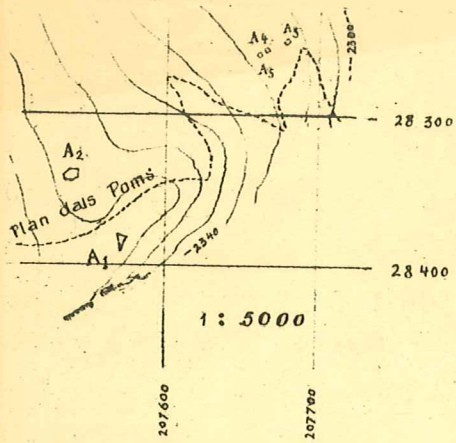
Kleinparzelle

XII S 14a

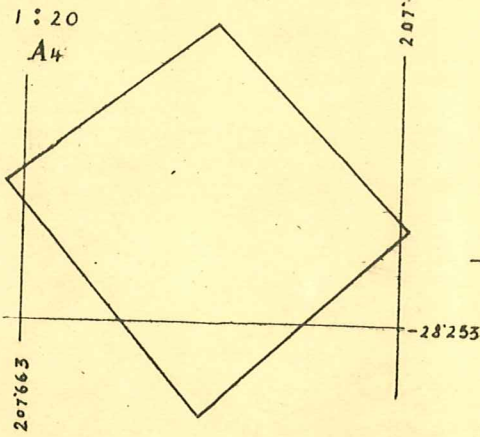
1:20

Blatt N°1

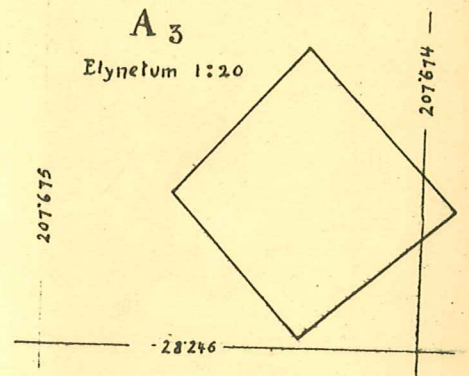
30 697.55
210 954.21



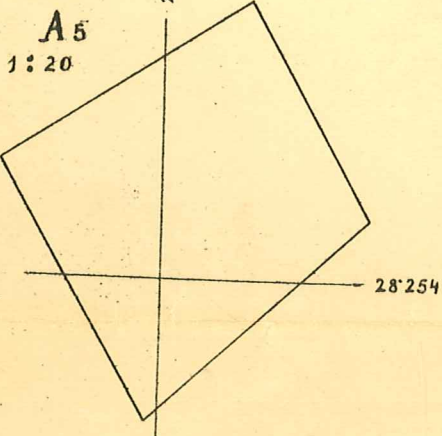
Papilionaceen:



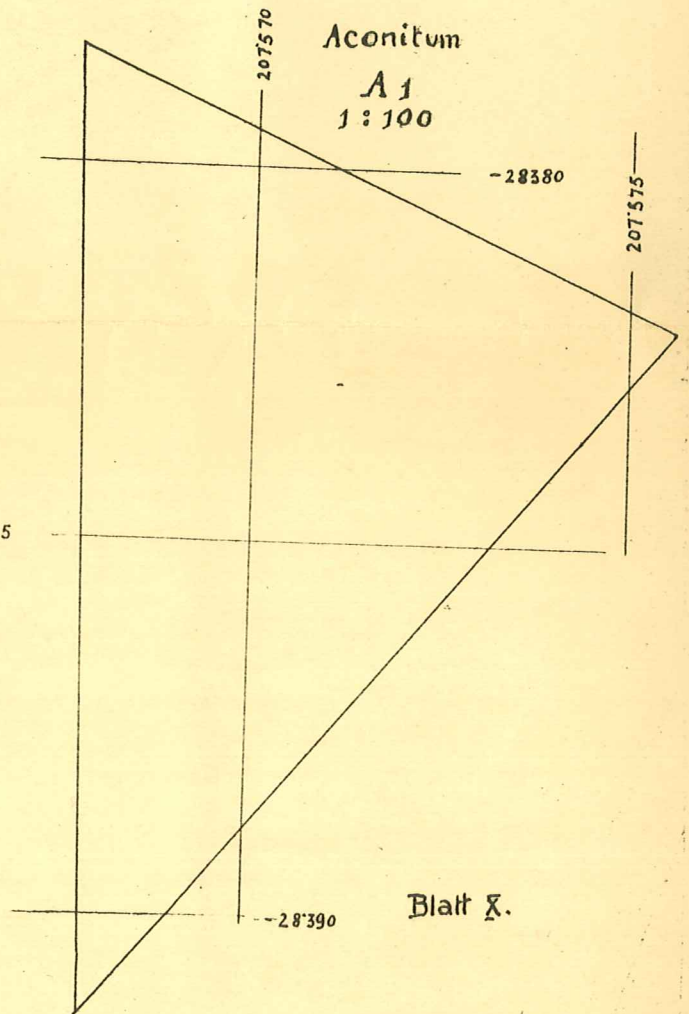
A₃
 Elynetum 1:20



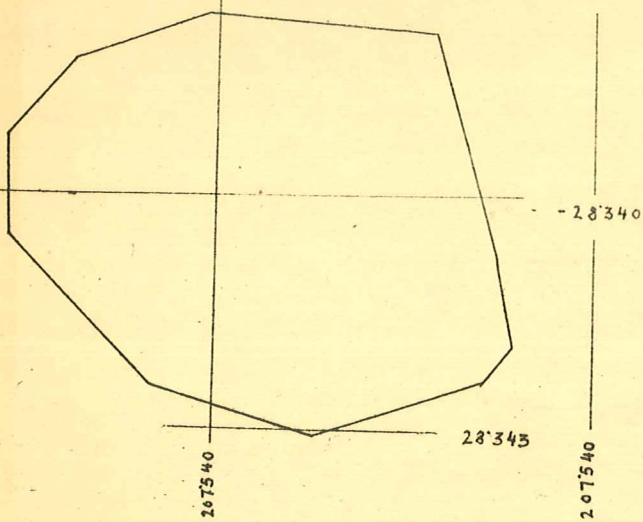
Agrostis - Elyna



Dauerflächen
 Plan dals
 Poms:



Hedysarum
 A₂ 1:100



Blatt X.

Amtlich



Abnahme mit Bremen

1949

+ Behrnes?

Kreisforstamt

(Stempel)

Kreisforstamt
Gadi

*Sehnetaria
Forstinspektoral Mr*

Beur

5. 9. 49

Nationalpark:

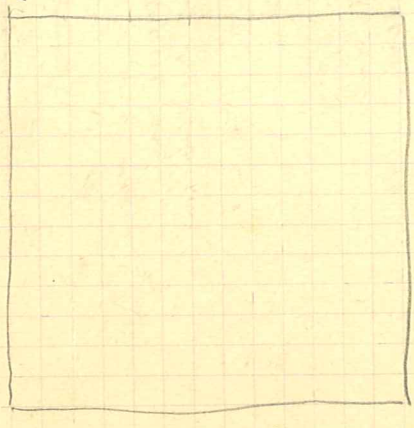
Fläche: 52 Plan Prä Spöl



4-10			
Cladonia spec.	} 1/2		
Cladonia pyxidata	} 1/2	85%	
Tortella tortuosa	⊙	1.2	
moosige Erde			
Ditrichum flexicaule			unter Fichte
Brachythecium?			
Peltigera			
" rufescens (brunn)			+
Poa alpina			+1
Helianth. grandifl.			12
Poa pratensis			+

Plan des Pans 5.9.49

Fläche: A3 *Alpnetum* am Vindkn.
 Pflanzung unterhalb
 Plan d. Pans 2320 m



- Alga myosuroides* 3.2
- Asperula alpina* 4.2-3 (abwärts 4)
- Saxifraga cornuta* 1-2, 2
- Carex repens* 0
- Carex cap.* + 1
- Dryas octop.* + 2
- Oxytropis camp.* 2 St. 5 St.
- Podic. verticillata* 0
- Poa. luvensis* 2 St.
- Sily. nely.* + 1
- Fragaria pumila* + 1
- Poly. oropp.* 2 St.
- Poly. crantzii* 1 St.
- Ranunc. alp.* 1 St.
- Pter. albensis* 3 St.
- Pter. "colobata"* 1 St.
- Lipidium simplex* + 1 6 St.
- Salix pumila* 0
- Campanula strobilifera* 2 St.
- Antennaria corp.* 3 St. Rand

- Potentilla Crantzii* 1
- Polygala comarostylis* +
- Galium pumilum* 2
- Leontodon hispidus* +
- Hieracium spicatum* 1
- Antennaria* + 2
- Pinguic. 5 Kleinling*
- " 5' alpe 7-50 m*
- Ulex. N. borisii* 0
- Leontodon hispidus* 1
- Vernonia fruticosa* +
- Tarax.* 0
- Thalic. alp.* +
- Lactus cornuti*
- Primula veris* 3 St.
- Trif. alpinus (n. l.)* 1 2
- Hieracium pilosella* + 1
- Pinguic. catharticum* +
- Melampyrum n. l. 1 St.*
- unter F.*
- Barbula convoluta*
- Prunella vulgaris* 0
- Papaver strychn.* 1 St.
- Dryas*
- C. ornata*
- C. trana islandica*
- Prisa 4 3 St.*
- Calaminthe alpina*
- Ursynthe, lenc.*

Phot. 1
 1/16, 1 sec, 2 m
 Halbdattent gelbschleibe

Helianthella sp. 0
Avena verticillata 3 St.
Gentiana badioph. + 1
Bartonia alp. 4 St.
Carex ornith. 1 St.

Rhynchospora repens 2.2
Cetraria orb. 1.1
Dittrichium flexicaule + 1
Selaginella selaginoides 1 St.
Tortella tort. 0
Tanacetaria vernalis 0
Cetraria vivalis (Hauk) + 1
Peltigera
Cetraria cucullata (normal) 1.1
Cladonia pyxidate
Flacidium 0

Standort: *Supula spicata* 1 St.

Abot: 1.5 m, Bl. 16, 1/25

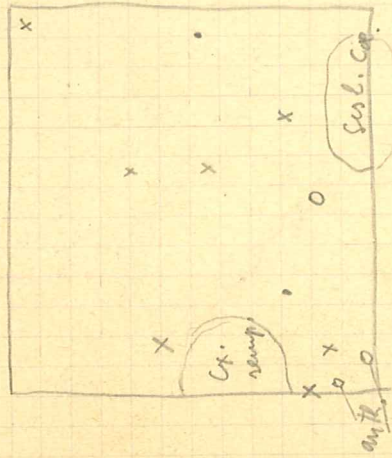
Sonne 15.00 h. hellbeschie

Fläche A4

mit viel Pappillrasseem
 Metall
 1. Pflanzsam 3 cm Mullbeurung auf Stahldraht
 (4.5 cm bis Oberfläche (ind. No. 100000))
 in 32 Jahren

Mittel 3 1/2 cm A0 + A1

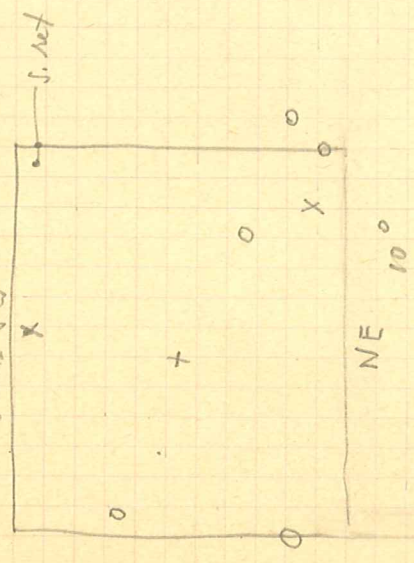
St. Oben SW



Avena verticillata + 1
Hedysarum hedy. + 1
antennaria 3.2
Supula multiflora 3.2
Agrostis alp. 2.2
Chama myosuroides + 1
Silene coer. + 3
Festuca penn. + 5
Cp. semp. + 5
 " *capillaris*
Pol. orb.
Pol. Crantzii

Peltis colorata + 1.2
Anth. carp. vest.
Pedicularis alp. +
Saussurea alp. +
Salix punn.
Oxytropis camp.
Campylopus silvdy. +
Botrydium tumaria +
Cr. Orthopoda + 2 Stk.
Alchemilla flabellata r
Sclagmella zely
Cyrtopogon coprophyllosum r
Munim ortorhynchium r
Peltipora (tot)
Cladonia fuscata 1 St.
Polypoa 1 St.

ibedit Fläche AS
 aprotis - Ulyne
 Ober. SU



Ulyne vepos. 3. 3
Aprotis alp. 3. 2
Festuca punnula +
Hydysarum 1 1
Oxytropis camp. 3 St.
Cr. carp. 8 St.
Polyp. v. 1 1
Salix pun. 7 7
Camp. silvdy. +
Anth. carpatica +
Musium orthorhynchium +
Citronia 2
Cladonia pyx +
Potentilla Bantpii + 1 St.
Alchemilla colorata
Bryophyllum
Lebor moss + 2
Cr. ericetorum +

Albemarle only. 0 1 St.
Notropis amara 1 St.
Salix retusa 2 St.
Avena utriculata 1 2

0

4,80 x 7 m A₂

2340 m, Plan des Pons

Hedysarum vrbis, Fagies des

Fragmatum violaceae

Hydysarum	111
Carex sempervirens	3.3
Salix reticulata	11
Lentodon himpidus	1.2
Dryas octopetala	11
Ligusticum simplex	1.2
Festuca violacea	
Phy. vrbis	
Serolis cbrulea	32
Solidella alp.	11
Carex. Ed.	11
Hornwort	11
Ped. vrbis	+
Antkemanis carp.	+
Salix vrbis	22-3
Dianthus carp.	+
Anthox	+
Trillium	
Potentilla Crantzi	2
Phyll. vrbis	2
Helianth. alp.	
Lygula multifl.	11
Epiphris alpina	
Anthox od.	1.2
Reumac. vrbis	+
Alchemilla vrbis. sp.	+
" flavissima	
Lygula sibirica	

Delaproyella
Elyna
Pedicularis wort.
Phyth. orbicula:
Luzula spic.
Arenaria vernalis
Festuca pumila
Gentiana aplylla
Potentilla aurea
Vacc. uliginosa
Galium pumilum 2 St.
Gentiana verna
Anthyllis vulner
Ranunculus alp.
Viola calcarata
scariosa lucida

1
 1 2
 +
 +
 + 1 St.
 1
 +
 2 St.

Phot. 2 1/2 m, Bl/16, 1/10, Sonne
 16.15 gelb-schwarz

Wasserball

Fläche: A1
 Lager
 Aconitum - Dreieck auf Plan des Poms

Aconitum napellus 1-4.4
Adonis vernalis
Poa pratensis 2.1
Trichostema europ.
Polygonum alpinum 2.1-2
Cirium sp. norv. 1.2
Denhamia calyptra 2.2-3
Festuca rubra 1.2
 " *violacea*
Melandrum arven
Lyth. mont.
Adonis vernalis
 " *cf. heteropoda*
Poa alpina + 1
Poa supina + 2

Brachyot-hecium reflexum
 " *salicifolium* var

det. A. Sauer

Phot.

5.9.49

SAP-NE

1750 m, near 150

Rearpöl

Picea subalpina

Vaccinium vitis id.

Morænan-lindlin skvach

rodolier

Wwald

Y 80%

25 m

30-50 m

helle beutet

X felle

44 Pice
11 Torix
+ 1 Pinus engel.

4

80% durn 75% moos

32 Vacc. Vitis

1 " myrte

+ 1 Hornog.

12 Oxalis

6.9.49

im jungen gegen die
letzte Fünfte

- Hauptviele:

- Lolium*
- Centodon autumnalis*
- Taraxacum officinale*
- Gymnosus erist.*
- aprotis cogg.*

Tamarix unvollständig
in absterbender

Sedum → Tendenz zum
junge Laub

Saxifraga im Inner -
Bentel

Silikat statt in

I. Stad. *S. daph.* *S. purpurea*
alvus incana

II. Stad. Laub mit
III. *Picea* *vaciniflora* mit Ca.

- Hieracium*
- Fraxinus*
- Urtica*
- Prunella*
- Potentilla*
- Lupinus*
- Cyanus*
- Picea*
- Salix*
- Lycopodium*
- Hypoxis*
- Mercurialis*
- Rubus*
- Asplenium*
- Pleurozium*
- Cetraria*
- Deschampsia*
- Atragene*
- Daphne*
- Pinus*
- Calluna*
- Pyrola*
- Thymus*
- Pyrola*
- Campanula*

det. Ahnes

400 m

Furrausch:

Epipactium variegatum - Funtiaelstadium
Carex in *inuvial* mit ex. bicolor
in *inuvial* & flachen Furrausch
in Oberengadin.

Juncus alpinus
apertis alba

Triplium agrarium aureum, Ch. A. des
Pactum *Strophylax*.

Festuca trachyphylla: Bl. rauh.
frucht als *F. incata* bestimmt.

Thalictrum foetidum } auf Si-schutt.
Viperon Schleideri

6. 9. 49

Weg von Jomey nach Ollis, rechte
Furrausch

1460 m

Amphibolitenluft mit viel
Exp. W. Fernerde
Weg 35-30°

4 m², 40-50%, 25 cm

Senecio viciatum - *Uobriatum rufidulae*

- 2-3. 2-3 *Woodsia rufidula*
- + 2 *Epilobium colinum*
- + 1 *Alchemilla strictum*
- + 1 *Veronica Dillenii*
- + 2 *Talictum foetidum*
- + 2 *Sedum dasycyllum*
- + 2 *Senecio viciatum* arachnoid.
- + 1 *Leibum vulgare*
- + 2 *Cerastium strictum*
- + 2 *Sedum album*
- + 2 *Veronica fruticans*

- 2 2 ↓ *Festuca denticulata*
- + 2 *Trisetum ruf.*
- + 2-3 *Poa puberula*
- + 2 *Poa xerophylla*
- + 2 *Polygonum spissum*

- + 2 *Verbasum crassifolium*
- + 2 *Thymus scopy*
var. *pollichianum*

auf grobem Schutt der Fernerde
Polygonum inverte, f. *heterophyllum*

Furwand:

Cypripedium variegatum - *Furticulostachyum*
Carex in *carpal* mit 6x *leucor*
in *oblongata* & *fladem* *Furwand*

Juncus alpinus
Aprosis alba

Trifolium agrarium *aurum*, Ch. A. des
Pacten *Xerophylae*.

Festuca trachyphylla: Bl. *ranch*.
frucht als *F. mellea* *bestimm*.

Thalictrum foetidum } auf Si-schutt
Trifolium silvestre

6. 9. 49

Weg von Jerny nach Oles, rechte
Furwand

1460 m

Amphibolythallus mit viel
Exp. w. Feinerde
weil 35-30°

4 m², 40-50%, 25 cm

Seneciojunctum - *lobnietum* *rudifolae*

- 2-3. 2-3 *Waldia trifida*
- + 2 *Gyilobium collinum*
- + 1 *allium strictum*
- + 1 *Veronica Dillen*
- + 1 *Talictum foetidum*
- + 2 *Sedum karyophyllum*
- + 2 *Seneciojunctum arach.oid.*
- + 1 *Edium vulgare*
- + 2 *Cerastium strictum*
- + 2 *Sedum album*
- + 2 *Veronica fruticans*

- 2 2 ↓ *Festuca decussata*
- + 2 *Trifolium silv.*
- + 2-3 *Poa puberula*
- + 2 *Poa xerophylla*
- 2 *Piptisium apratum*
- + 2 *Verbasum crassifolium*
- + 2 *Thymus serpy.*
var. *polakianum*

auf grobem Schutt und Feinerde
Polyporus silvestris, f. *leucophyllus*